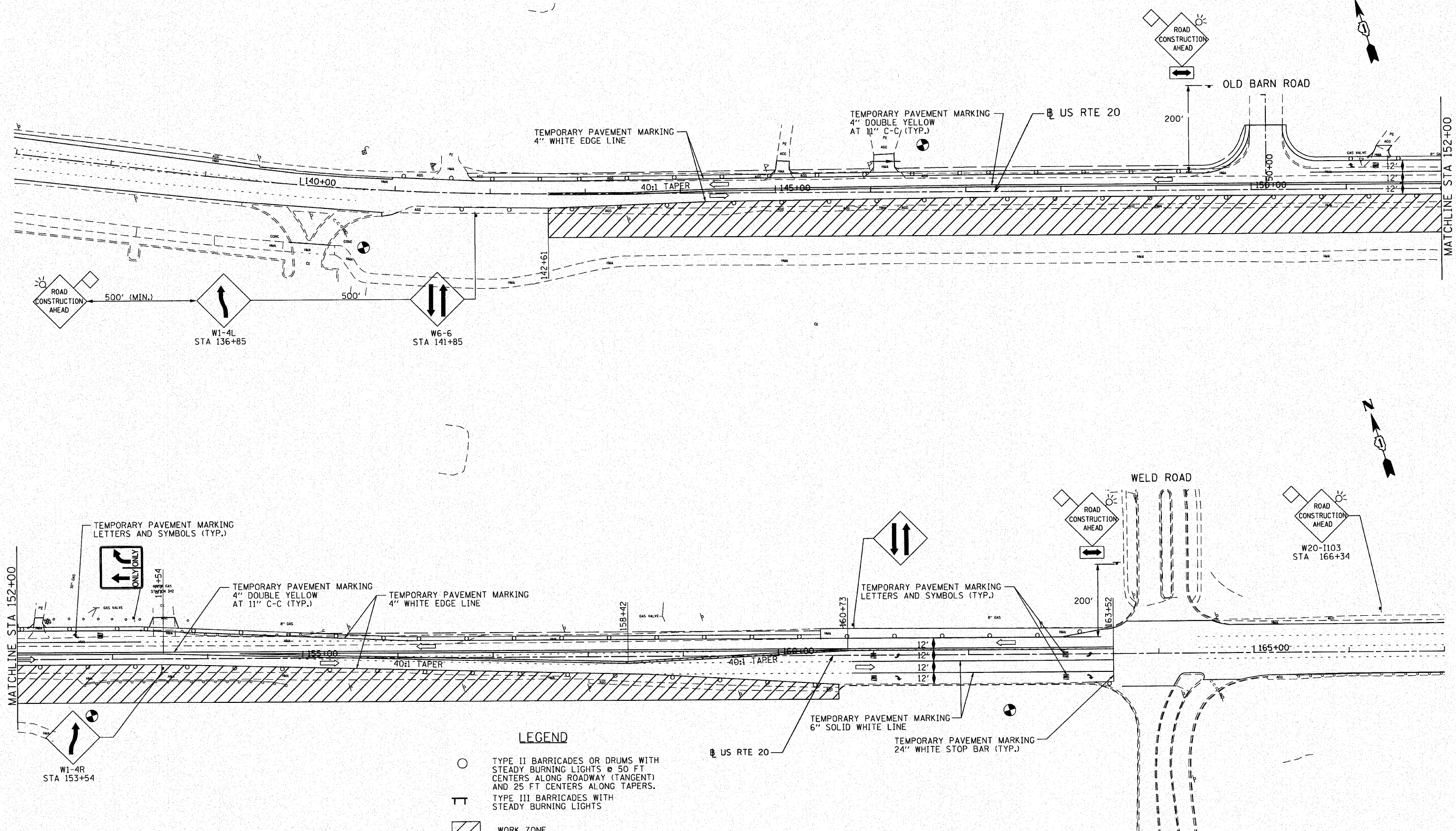


KE 4-21-2010

FILE NAME = P:\2009\ME09086 - Var-Var - PH1\CADD\W05_US20\Sta\0162529 - AN-MOT21.dgn
 PLOT SCALE = 1/4" = 100'
 USER NAME = Millennium Professional Services



LEGEND

- TYPE II BARRICADES OR DRUMS WITH STEADY BURNING LIGHTS @ 50 FT CENTERS ALONG ROADWAY (TANGENT) AND 25 FT CENTERS ALONG TAPERS.
- TT TYPE III BARRICADES WITH STEADY BURNING LIGHTS
- ▨ WORK ZONE

MILLENNIA PROFESSIONAL SERVICES
 200 22ND Street, Suite 216, Lombard, IL 60148
 630.785.8110 voice, 630.839.2566 fax
 WWW.MPS-IL.COM

DESIGNED - TVN	REVISED -
DRAWN - TVN	REVISED -
CHECKED - RPD	REVISED -
DATE - 4/20/2010	REVISED -

**STATE OF ILLINOIS
 DEPARTMENT OF TRANSPORTATION**

**U.S. ROUTE 20
 EAST OF PLANK ROAD TO WELD ROAD**

**SUGGESTED STAGES OF CONSTRUCTION
 AND TRAFFIC CONTROL
 STAGE - 2**

SCALE: 1"=50' SHEET NO. OF SHEETS STA. TO STA.

F.A.P. RTE. 345	SECTION 8WRS-2	COUNTY KANE	TOTAL SHEETS 72	SHEET NO. 21
CONTRACT NO. 62529				
FED. ROAD DIST. NO. 1 [ILLINOIS] FED. AID PROJECT				

MOT-21

P:\2009\ME09086 - Var-Var - PH1\CADD\W05_US20\Sta\0162529 - AN-MOT21.dgn