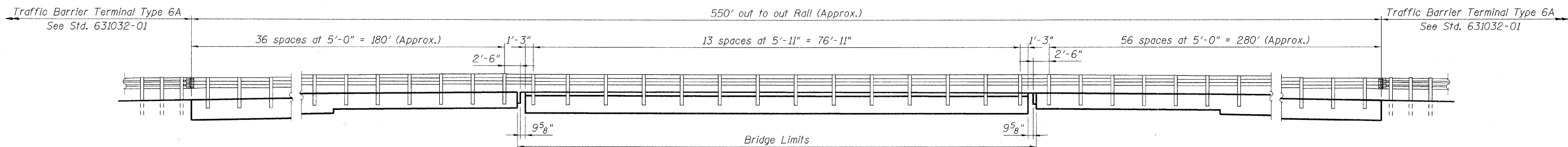
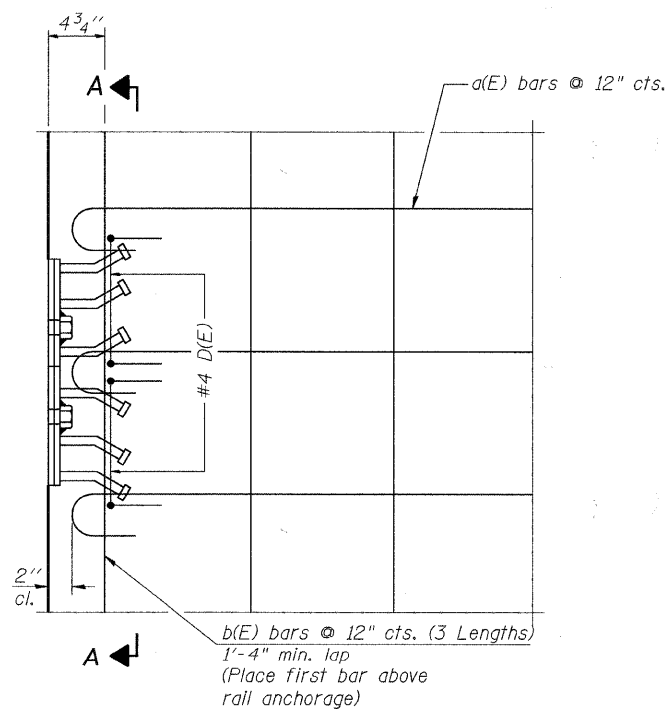


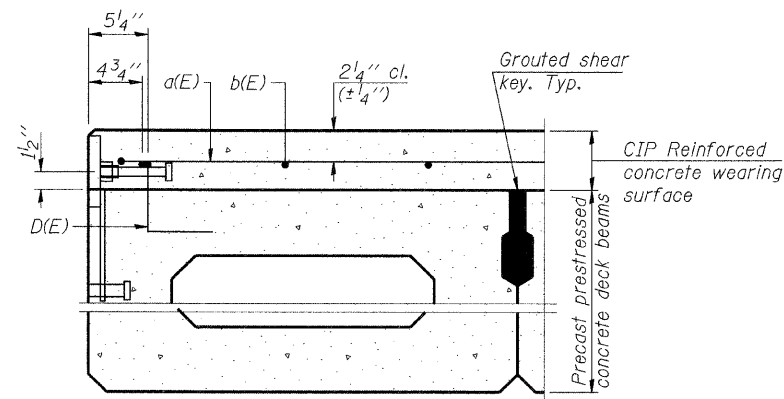
**STEEL RAILING LAYOUT**  
(West Side - Looking East)



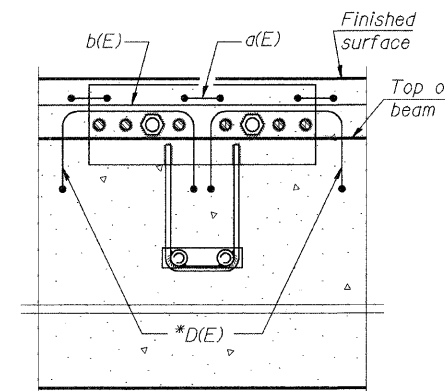
**STEEL RAILING LAYOUT**  
(East Side - Looking West)



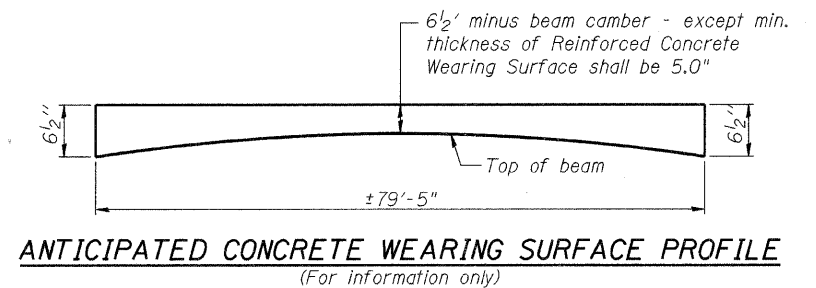
**PLAN**



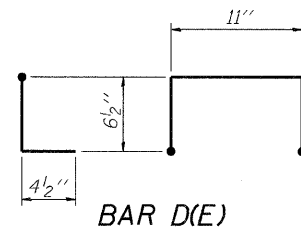
**SECTION THRU FASCIA BEAM**



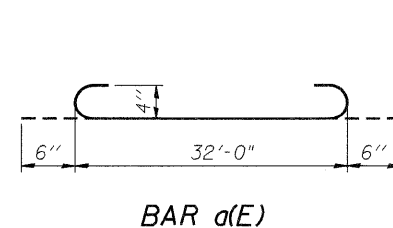
**SECTION A-A**



**ANTICIPATED CONCRETE WEARING SURFACE PROFILE**  
(For information only)



**BAR D(E)**



**BAR a(E)**

\* Place 2-#4 D(E) bars in beam at each post location as shown. D(E) bar included in cost of beam.

**SUPERSTRUCTURE  
BILL OF MATERIAL**

Bar	No.	Size	Length	Shape
a(E)	80	#4	33'-0"	U
b(E)	99	#4	27'-6"	—
Reinforcement Bars, Epoxy Coated		Pound		3,590
Concrete Wearing Surface, 5"		Sq. Yd.		283
Steel Railing Type, SM		Foot		661
Protective Coat		Sq. Yd.		282
Bridge Deck Grooving		Sq. Yd.		265

**MINIMUM BAR LAP**

#4 bar = 2'-0"

Notes:  
Formwork necessary for the wearing surface may be secured utilizing the bottom rail anchorage inserts and/or additional inserts cast into the beam.

\G:\0011202.DCN \M2010201.DCN \CPR10201.DCN \STRUCT\CAD\01 DES\01A VIA TENG\SHEET\5810201.SHT  
 10-25-2010 14:58:47 \S-0044\AM\AULT.D-TRANS.07\2202\20745-001\STRUCT\CAD\01 DES\01A VIA TENG\SHEET\5810201.SHT

