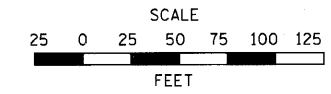


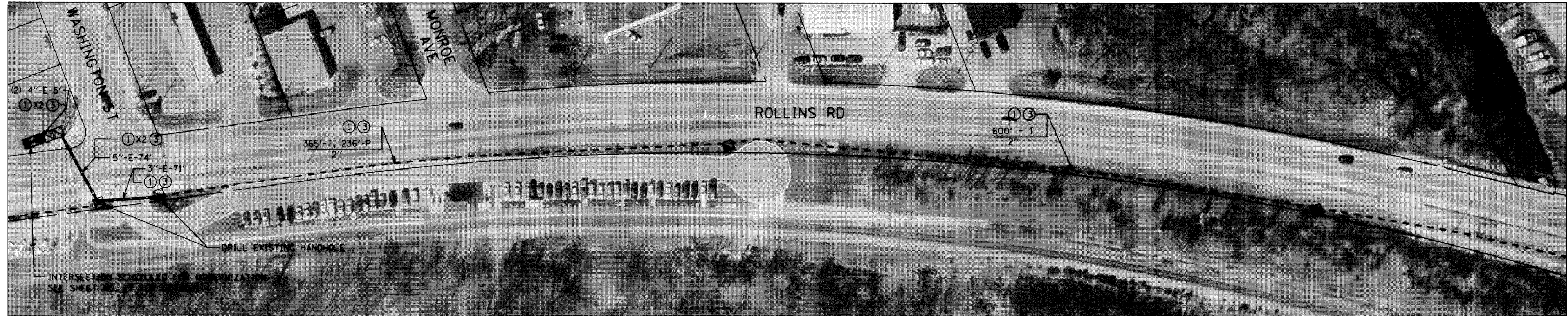
NOTES:

- ① PROPOSED FIBER OPTIC CABLE IN CONDUIT, SM24F
- ② TERMINATE FIBERS AT DISTRIBUTION ENCLOSURE IN CABINET
- ③ PROPOSED ELECTRIC CABLE IN CONDUIT, TRACER, NO. 14 1C
- ④ SPLICE FIBERS IN CABINET
- ⑤ EXISTING 12F MM FIBER OPTIC AND TRACER CABLES TO REMAIN
- ⑥ REMOVE COPPER INTERCONNECT CABLE FROM CONDUIT
- ⑦ COIL 40' OF FIBER OPTIC CABLE SLACK IN DOUBLE HANDHOLE
- ⑧ POSSIBLE UTILITY CONFLICT



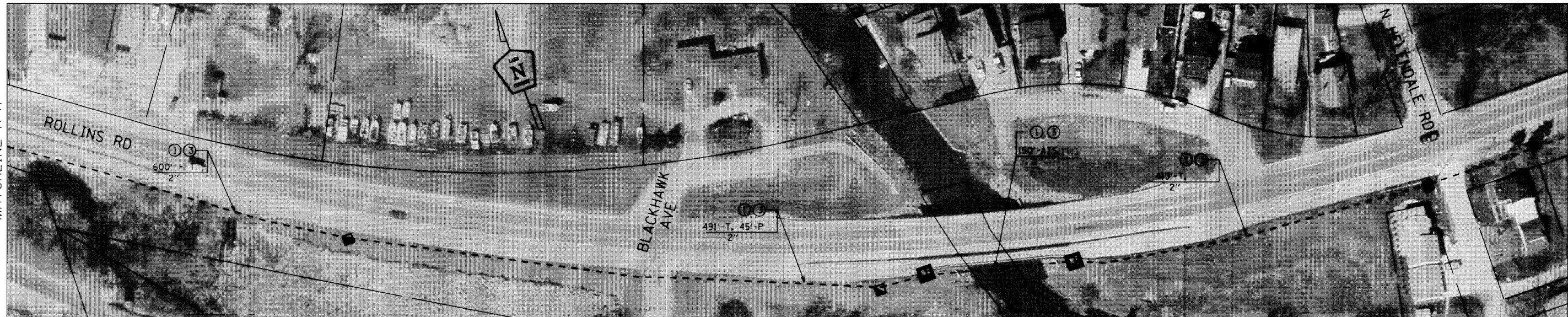
x
x

SEE SHEET NO. 47
MATCHLINE BOTTOM RIGHT



MATCHLINE A-A

MATCHLINE A-A



MATCHLINE TOP LEFT
SEE SHEET NO. 49



USER NAME = JM	DESIGNED - DG	REVISED -
	DRAWN - JM	REVISED -
PLOT SCALE =	CHECKED - DC	REVISED -
PLOT DATE = 10-05-2010	DATE - 10-05-2010	REVISED -

STATE OF ILLINOIS
DEPARTMENT OF TRANSPORTATION

ROLLINS ROAD INTERCONNECT
FROM GRAND AVE. TO CEDAR LAKE RD.

SCALE: 1"=50' SHEET 6 OF 12

ROUTE	SECTION	SECTION NUMBER	SHEET	SHEETS
FAU 181		09-00999-07-TL	48	72
		C3-5	CONTRACT NO. 09472	