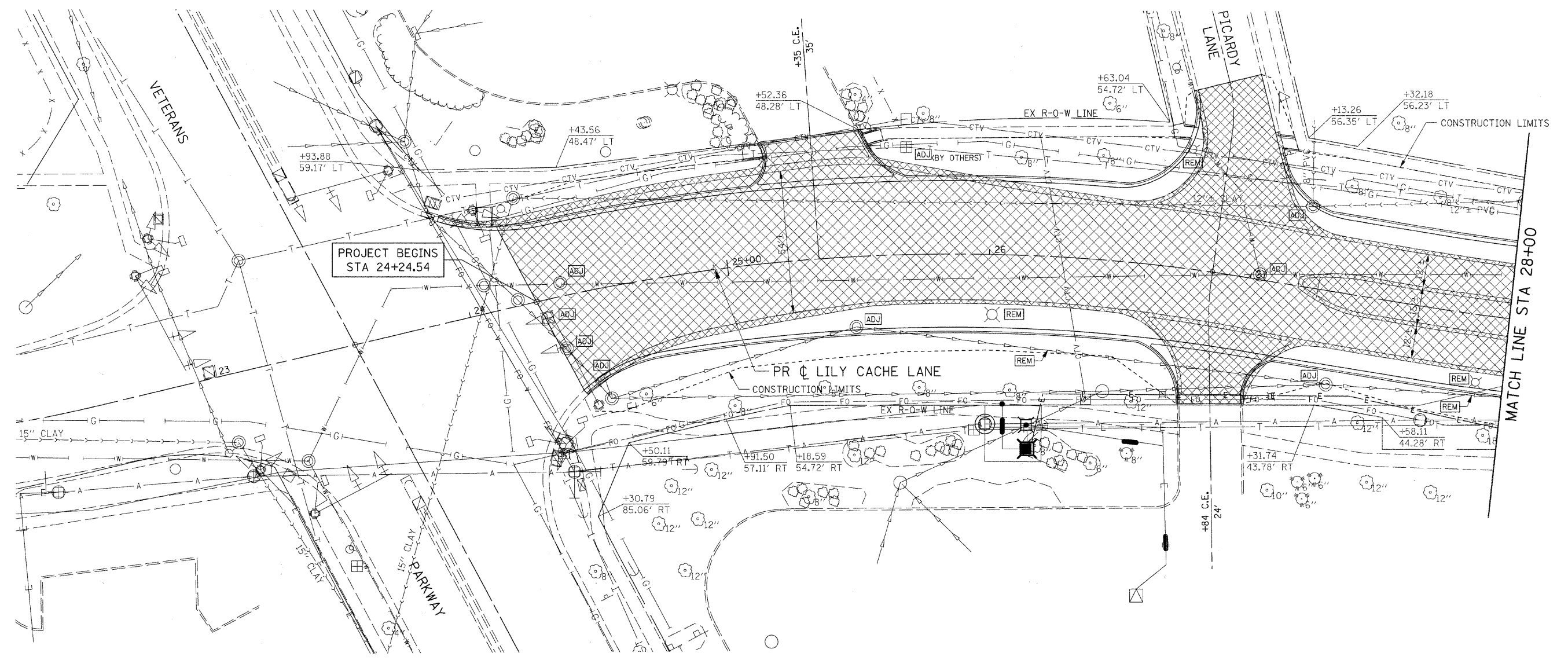
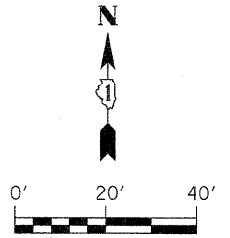


NOTE:

1. TREES IN CONSTRUCTION AREA NOT MARKED FOR REMOVAL SHALL BE PROTECTED IN ACCORDANCE WITH THE STANDARD SPECIFICATIONS.
2. MAIL BOXES IN CONSTRUCTION LIMITS SHALL BE REPLACED WITH NEW MAIL BOXES. EXISTING MAIL BOXES REMOVED SHALL BE RETURNED TO THE PROPERTY OWNERS.
3. SEE SIGNING & STRIPING SHEETS FOR STREET SIGN REMOVAL/RELOCATION.



LEGEND

- ASPHALT / CONCRETE REMOVAL
- INDICATES ITEM TO BE REMOVED

FILE NAME = G:\S09021\CADD_Sheets\9021REM01.dgn	USER NAME = IE Consultants	DESIGNED -	REVISED -
		DRAWN -	REVISED -
		CHECKED -	REVISED -
		DATE -	REVISED -

**STATE OF ILLINOIS
DEPARTMENT OF TRANSPORTATION**

LILY CACHE LANE REMOVAL AND ADJUSTMENT PLAN			
SCALE:	SHEET NO. OF SHEETS	STA. 24+24.54 TO STA. 28+00	

F.A.U.	SECTION	COUNTY	TOTAL SHEETS	SHEET NO.
1578	06-00046-01-PV	WILL	244	56
ILLINOIS FED. AID PROJECT			CONTRACT NO. 63503	