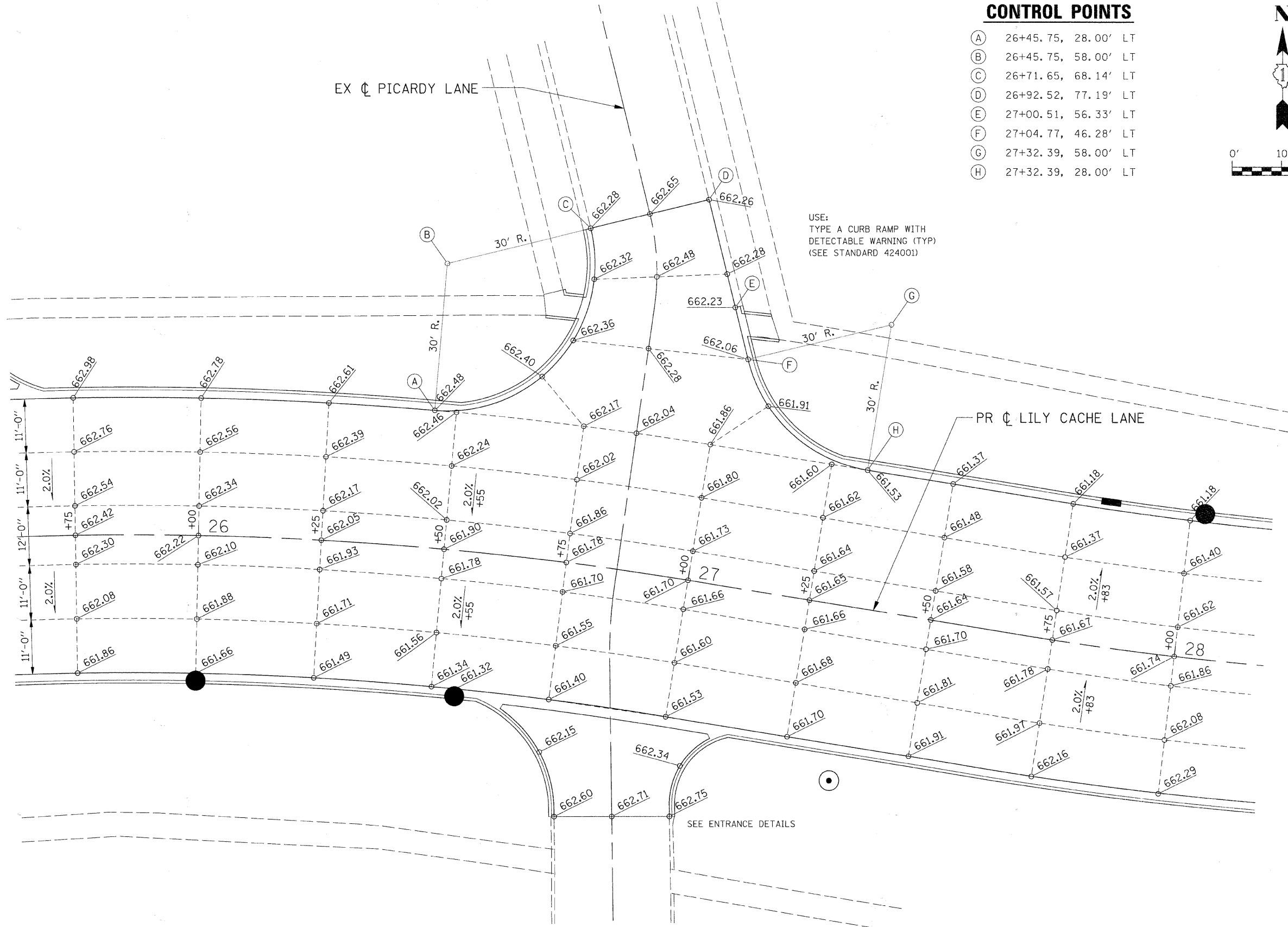
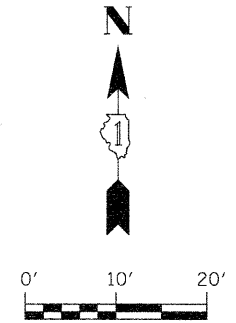


CONTROL POINTS

- (A) 26+45.75, 28.00' LT
- (B) 26+45.75, 58.00' LT
- (C) 26+71.65, 68.14' LT
- (D) 26+92.52, 77.19' LT
- (E) 27+00.51, 56.33' LT
- (F) 27+04.77, 46.28' LT
- (G) 27+32.39, 58.00' LT
- (H) 27+32.39, 28.00' LT



| | | | | | | | | | | | | | |
|--|-----------------------------|------------|-----------|---|---|-----------|-----------|---|---------|---------|----------------|--------------|-----------|
| FILE NAME = G:\S09021\CADD_Sheets\9021D01.dgn | USER NAME = IE Consultants | DESIGNED - | REVISED - | STATE OF ILLINOIS DEPARTMENT OF TRANSPORTATION | INTERSECTION DETAIL PICARDY LANE | | | | F.A.U. | SECTION | COUNTY | TOTAL SHEETS | SHEET NO. |
| | PLOT SCALE = 10.0000' / IN. | DRAWN - | REVISED - | | SCALE: | SHEET NO. | OF SHEETS | STA. | TO STA. | 1578 | 06-00046-01-PV | WILL | 244 |
| PLOT DATE = 10/22/2010 | DATE - | REVISOR - | REVISOR - | | | | | CONTRACT NO. 63503 ILLINOIS FED. AID PROJECT | | | | | |