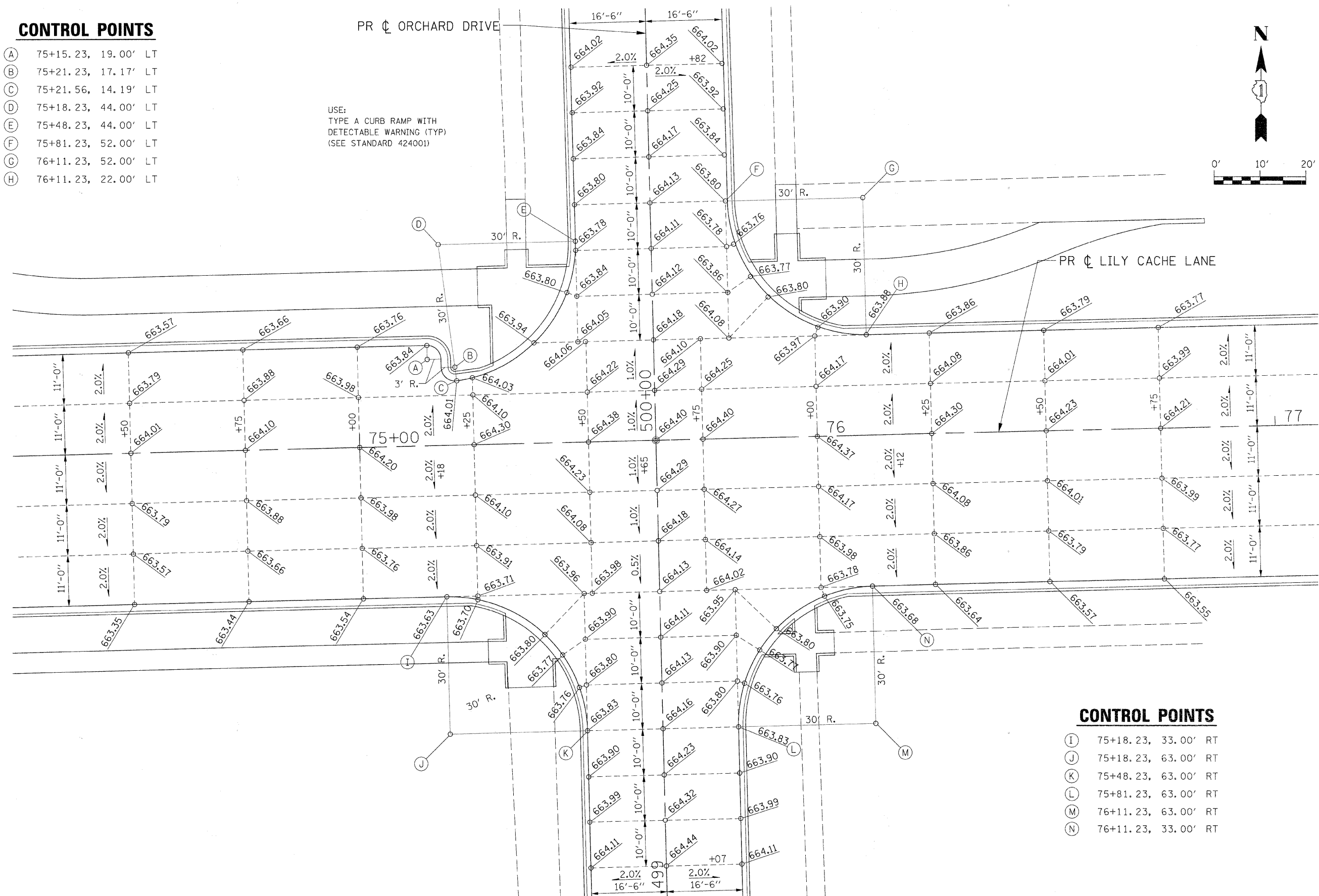
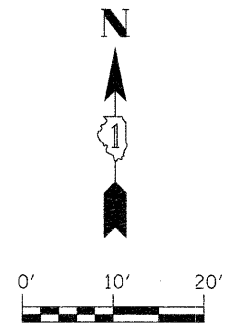


**CONTROL POINTS**

- (A) 75+15.23, 19.00' LT
- (B) 75+21.23, 17.17' LT
- (C) 75+21.56, 14.19' LT
- (D) 75+18.23, 44.00' LT
- (E) 75+48.23, 44.00' LT
- (F) 75+81.23, 52.00' LT
- (G) 76+11.23, 52.00' LT
- (H) 76+11.23, 22.00' LT

USE:  
TYPE A CURB RAMP WITH  
DETECTABLE WARNING (TYP)  
(SEE STANDARD 424001)



**CONTROL POINTS**

- (I) 75+18.23, 33.00' RT
- (J) 75+18.23, 63.00' RT
- (K) 75+48.23, 63.00' RT
- (L) 75+81.23, 63.00' RT
- (M) 76+11.23, 63.00' RT
- (N) 76+11.23, 33.00' RT

FILE NAME = G:\S09021\CADD_Sheets\9021D04.dgn	USER NAME = IE Consultants	DESIGNED -	REVISED -	<b>STATE OF ILLINOIS DEPARTMENT OF TRANSPORTATION</b>	<b>INTERSECTION DETAIL ORCHARD DRIVE</b>	F.A.U. 1578	SECTION 06-00046-01-PV	COUNTY WILL	TOTAL SHEETS 244	SHEET NO. 174
PLOT SCALE = 10.0000' / IN.	PLOT DATE = 10/22/2010	DRAWN -	REVISED -	SCALE: SHEET NO. OF SHEETS STA. TO STA.		CONTRACT NO. 63503 <small>ILLINOIS FED. AID PROJECT</small>				