

EXISTING EQUIPMENT LEGEND

- ▷ EXISTING SIGNAL HEAD
- EXISTING SERVICE INSTALLATION
- EXISTING SIGNAL POST AND FOUNDATION
- EXISTING STEEL MAST ARM POLE AND FOUNDATION
- ⊠ "E" EXISTING CONTROLLER AND FOUNDATION
- ⊠ EXISTING HANDHOLE
- EXISTING PEDESTRIAN SIGNAL HEAD
- ⊙ EXISTING PEDESTRIAN PUSHBUTTON
- ⊠ EMERGENCY VEHICLE LIGHT DETECTOR
- ▷ CONFIRMATION BEACON
- ⊠ "E" EXISTING HEAVY-DUTY HANDHOLE
- EXISTING STEEL COMBINATION MAST ARM ASSEMBLY AND POLE AND FOUNDATION
- ⊠ "E" EXISTING VIDEO DETECTOR

RESTORATION OF WORK AREA

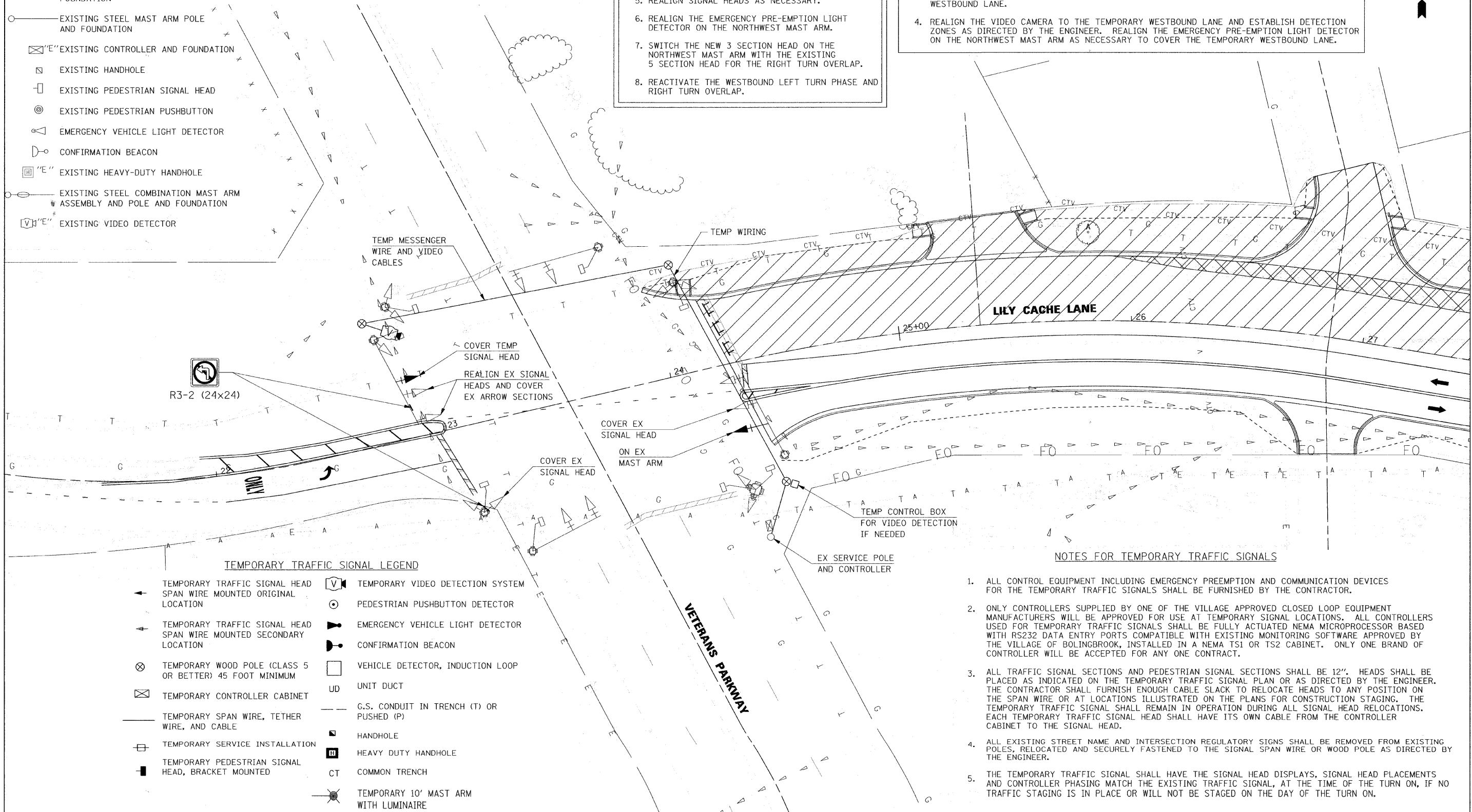
RESTORATION OF TRAFFIC SIGNAL WORK AREA SHALL BE INCIDENTAL TO THE RELATED PAY ITEM SUCH AS FOUNDATION, CONDUIT, HANDHOLE, TRENCH AND BACKFILL, ETC., AND NO EXTRA COMPENSATION SHALL BE ALLOWED. ALL ROADWAY SURFACES SUCH AS SHOULDERS, MEDIANS, SIDEWALKS, PAVEMENT, ETC. SHALL BE REPLACED IN KIND. ALL DAMAGE TO MOWED LAWNS SHALL BE REPLACED WITH AN APPROVED SOD, AND ALL DAMAGE TO UNMOWED FIELDS SHALL BE SEED IN ACCORDANCE WITH STANDARD SPECIFICATIONS 252 AND 250 RESPECTIVELY.

STAGE 4 TEMPORARY SIGNAL NOTES

1. REMOVE THE TEMPORARY SIGNAL SYSTEM.
2. UNCOVER THE COVERED SIGNAL HEADS.
3. REMOVE THE NO LEFT TURN SIGNS.
4. RECONNECT THE FEEDS TO ALL EXISTING SIGNALS.
5. REALIGN SIGNAL HEADS AS NECESSARY.
6. REALIGN THE EMERGENCY PRE-EMPTION LIGHT DETECTOR ON THE NORTHWEST MAST ARM.
7. SWITCH THE NEW 3 SECTION HEAD ON THE NORTHWEST MAST ARM WITH THE EXISTING 5 SECTION HEAD FOR THE RIGHT TURN OVERLAP.
8. REACTIVATE THE WESTBOUND LEFT TURN PHASE AND RIGHT TURN OVERLAP.

STAGE 3 TEMPORARY SIGNAL NOTES

1. REMOVE THE TEMPORARY SIGNAL HEADS FOR THE EASTBOUND TRAFFIC IN STAGE 2.
2. INSTALL A NEW 3 SECTION HEAD ON THE SOUTHEAST MAST ARM FOR EASTBOUND TRAFFIC. DISCONNECT THE SIGNAL SECTIONS IN THE EXISTING 3 SECTION HEAD AND CONNCT THE NEW 3 SECTION HEAD TO THAT TERMINAL STRIP WITH #14 5C CABLES. COVER THE EXISTING 3 SECTION HEAD. RECONNECT THE EASTBOUND MAST ARM SIGNALS AT THE CONTROLLER.
3. UNCOVER THE RED, YELLOW AND GREEN ON THE 5 SECTION HEADS ON THE NORTHWEST MAST ARM, BUT LEAVE THE ARROW SECTIONS COVERED. REALIGN THESE SIGNALS FOR THE TEMPORARY WESTBOUND LANE.
4. REALIGN THE VIDEO CAMERA TO THE TEMPORARY WESTBOUND LANE AND ESTABLISH DETECTION ZONES AS DIRECTED BY THE ENGINEER. REALIGN THE EMERGENCY PRE-EMPTION LIGHT DETECTOR ON THE NORTHWEST MAST ARM AS NECESSARY TO COVER THE TEMPORARY WESTBOUND LANE.



TEMPORARY TRAFFIC SIGNAL LEGEND

- ◀ TEMPORARY TRAFFIC SIGNAL HEAD SPAN WIRE MOUNTED ORIGINAL LOCATION
- ▶ TEMPORARY TRAFFIC SIGNAL HEAD SPAN WIRE MOUNTED SECONDARY LOCATION
- ⊗ TEMPORARY WOOD POLE (CLASS 5 OR BETTER) 45 FOOT MINIMUM
- ⊠ TEMPORARY CONTROLLER CABINET
- TEMPORARY SPAN WIRE, TETHER WIRE, AND CABLE
- TEMPORARY SERVICE INSTALLATION
- ▬ TEMPORARY PEDESTRIAN SIGNAL HEAD, BRACKET MOUNTED
- ⊠ TEMPORARY VIDEO DETECTION SYSTEM
- ⊙ PEDESTRIAN PUSHBUTTON DETECTOR
- ⊠ EMERGENCY VEHICLE LIGHT DETECTOR
- ▷ CONFIRMATION BEACON
- VEHICLE DETECTOR, INDUCTION LOOP
- UD UNIT DUCT
- G.S. CONDUIT IN TRENCH (T) OR PUSHED (P)
- ⊠ HANDHOLE
- ⊠ HEAVY DUTY HANDHOLE
- CT COMMON TRENCH
- ⊠ TEMPORARY 10' MAST ARM WITH LUMINAIRE

NOTES FOR TEMPORARY TRAFFIC SIGNALS

1. ALL CONTROL EQUIPMENT INCLUDING EMERGENCY PREEMPTION AND COMMUNICATION DEVICES FOR THE TEMPORARY TRAFFIC SIGNALS SHALL BE FURNISHED BY THE CONTRACTOR.
2. ONLY CONTROLLERS SUPPLIED BY ONE OF THE VILLAGE APPROVED CLOSED LOOP EQUIPMENT MANUFACTURERS WILL BE APPROVED FOR USE AT TEMPORARY SIGNAL LOCATIONS. ALL CONTROLLERS USED FOR TEMPORARY TRAFFIC SIGNALS SHALL BE FULLY ACTUATED NEMA MICROPROCESSOR BASED WITH RS232 DATA ENTRY PORTS COMPATIBLE WITH EXISTING MONITORING SOFTWARE APPROVED BY THE VILLAGE OF BOLINGBROOK, INSTALLED IN A NEMA TS1 OR TS2 CABINET. ONLY ONE BRAND OF CONTROLLER WILL BE ACCEPTED FOR ANY ONE CONTRACT.
3. ALL TRAFFIC SIGNAL SECTIONS AND PEDESTRIAN SIGNAL SECTIONS SHALL BE 12". HEADS SHALL BE PLACED AS INDICATED ON THE TEMPORARY TRAFFIC SIGNAL PLAN OR AS DIRECTED BY THE ENGINEER. THE CONTRACTOR SHALL FURNISH ENOUGH CABLE SLACK TO RELOCATE HEADS TO ANY POSITION ON THE SPAN WIRE OR AT LOCATIONS ILLUSTRATED ON THE PLANS FOR CONSTRUCTION STAGING. THE TEMPORARY TRAFFIC SIGNAL SHALL REMAIN IN OPERATION DURING ALL SIGNAL HEAD RELOCATIONS. EACH TEMPORARY TRAFFIC SIGNAL HEAD SHALL HAVE ITS OWN CABLE FROM THE CONTROLLER CABINET TO THE SIGNAL HEAD.
4. ALL EXISTING STREET NAME AND INTERSECTION REGULATORY SIGNS SHALL BE REMOVED FROM EXISTING POLES, RELOCATED AND SECURELY FASTENED TO THE SIGNAL SPAN WIRE OR WOOD POLE AS DIRECTED BY THE ENGINEER.
5. THE TEMPORARY TRAFFIC SIGNAL SHALL HAVE THE SIGNAL HEAD DISPLAYS, SIGNAL HEAD PLACEMENTS AND CONTROLLER PHASING MATCH THE EXISTING TRAFFIC SIGNAL, AT THE TIME OF THE TURN ON, IF NO TRAFFIC STAGING IS IN PLACE OR WILL NOT BE STAGED ON THE DAY OF THE TURN ON.

FILE NAME =	USER NAME = IE Consultants	DESIGNED -	REVISED -	STATE OF ILLINOIS DEPARTMENT OF TRANSPORTATION	LILY CACHE LANE AT VETERANS PARKWAY TEMPORARY TRAFFIC SIGNAL PLAN - STAGE 3	F.A.U.	SECTION	COUNTY	TOTAL SHEETS	SHEET NO.	
G:\S09021\CADD_Sheets\NTS & LIGHTING\dl01_Veterans_TF_02.dgn	PLOT SCALE = 20,0000' / IN.	DRAWN -	REVISED -			1578	06-00046-01-PV	WILL	244	193B	
PLOT DATE = 11/16/2010	DATE	CHECKED -	REVISED -			CONTRACT NO. 63503		ILLINOIS FED. AID PROJECT			
						SCALE:	SHEET NO. OF SHEETS	STA.	TO STA.		