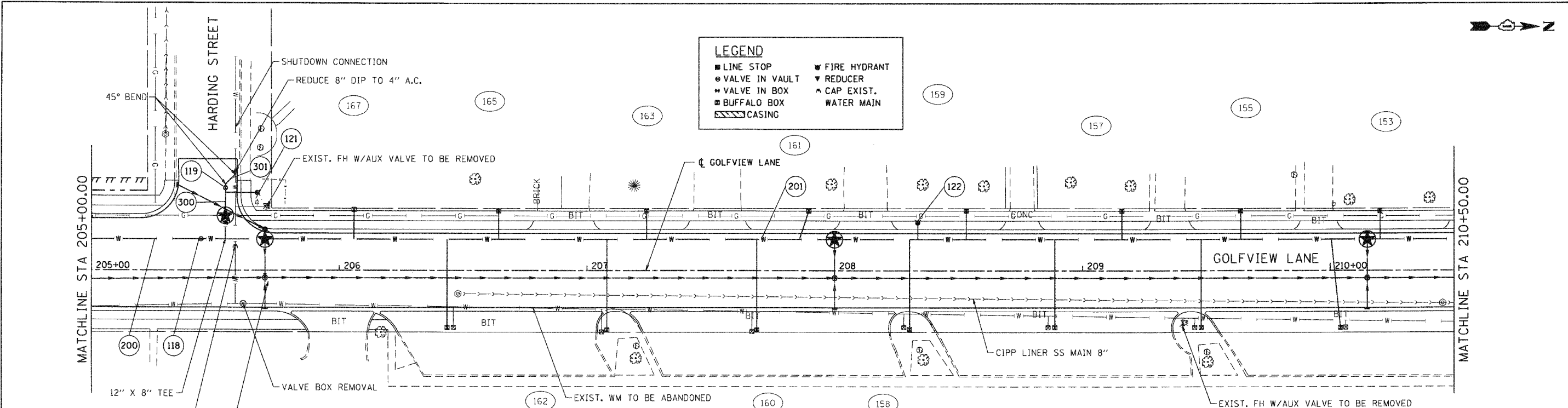


PLAN	SURVEYED	DATE
	PLOTTED	BY
	NOTED	
	REVISIONS	
	FILE NAME	
	FILE NO.	
	FILE DATE	

PROFILE	SURVEYED	DATE
	PLOTTED	BY
	NOTED	
	REVISIONS	
	FILE NAME	
	FILE NO.	
	FILE DATE	

COMPANY NAME: SEC GROUP, INC.  
 PROJECT CONTACT: A. JAIN  
 PROJECT ADDRESS: VILLAGE OF CARPENTERSVILLE  
 PROJECT NO: 06-00074-00-PP  
 FILE NAME: 06-00074-00-PP.dwg  
 PLOT DRIVER: standard-trans.ctb  
 PEN TABLE:



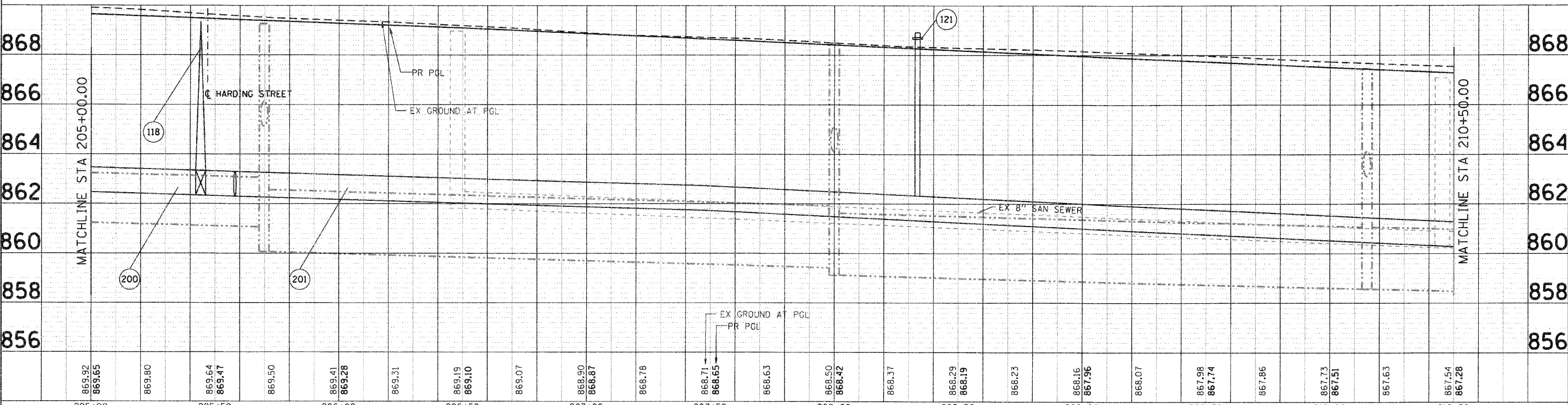
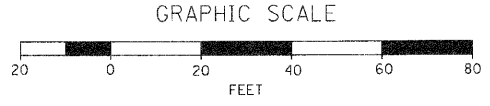
**LEGEND**

- LINE STOP
- VALVE IN VAULT
- ⊕ VALVE IN BOX
- ⊠ BUFFALO BOX
- ▨ CASING
- ⊕ FIRE HYDRANT
- ▼ REDUCER
- ⊠ CAP EXIST.
- ⊕ WATER MAIN

**WATERMAIN TAGS**

118 12" GATE VALVE IN 60" VALVE VAULT STA. 205+44.22, 12.55' LT BURY ELEV. = 869.50	122 FIRE HYDRANT W/ AUXILIARY VALVE STA. 208+33.49, 19.29' LT RIM ELEV. = 868.35
119 8" GATE VALVE IN 48" VALVE VAULT STA. 205+54.04, 33.13' LT BURY ELEV. = 869.16	201 806 LF WATER MAIN 12"
121 FIRE HYDRANT W/ AUXILIARY VALVE STA. 205+66.90, 31.22' LT BURY ELEV. = 869.65	300 21 LF WATER MAIN 8"
	301 8 LF WATER MAIN 8"

★ CROSSING:  
 FOR ADDITIONAL INFORMATION,  
 SEE DRAINAGE PLAN AND  
 PROFILE SHEETS.



205+00	869.92	869.65	869.80	869.64	869.47	869.50	869.41	869.28	869.31	869.19	869.10	869.07	868.90	868.87	868.78	868.71	868.65	868.63	868.50	868.42	868.37	868.29	868.19	868.23	868.16	867.96	868.07	867.98	867.74	867.86	867.73	867.51	867.63	867.54	867.28	210+50	
DESIGNED - C. PIEPER		DRAWN - R. BEST		CHECKED - T. HAMILTON		DATE - 10/25/10		REVISIONS		REVISIONS		REVISIONS		REVISIONS		REVISIONS		REVISIONS		REVISIONS		REVISIONS		REVISIONS		REVISIONS		REVISIONS		REVISIONS		REVISIONS		REVISIONS		REVISIONS	

**SEC Group, Inc.**  
 An HR Group Company  
 425 N. First Street  
 Mankato, MN 56001-2138  
 1-800-345-1774 • 507-386-1751  
 www.secgroup.com  
 Mankato, MN • Roseville, CA • Lincoln, IL • Chicago, IL

**VILLAGE OF CARPENTERSVILLE**

**WATERMAIN AND SANITARY SEWER PLAN AND PROFILE  
 GOLFVIEW LANE**

F.A. RTE.	SECTION	COUNTY	TOTAL SHEETS	SHEET NO.
•	06-00074-00-PP	KANE	211	76
• FAU 2414, FAU 1280, FAP 343		CONTRACT NO. 63504		
FED. ROAD DIST. NO. [ILLINOIS] FED. AID PROJECT				

SCALE: 1" = 20' SHEET NO. 7 OF 20 SHEETS STA. 205+00 TO STA. 210+50