

F.A.P. RTE.	SECTION	COUNTY	TOTAL SHEETS	SHEET NO.
334	09-00057-00-CH	COOK	103	1
FED. ROAD DIST. NO. 1	ILLINOIS	CONTRACT NO. 63523		

INDEX OF SHEETS
FOR INDEX OF SHEETS, SEE SHEET NO. 2

STATE OF ILLINOIS
DEPARTMENT OF TRANSPORTATION
DIVISION OF HIGHWAYS

**PLANS FOR PROPOSED
FEDERAL AID HIGHWAY**

FAP ROUTE 344 (IL ROUTE 83 - BUSSE ROAD)
AT PRATT BOULEVARD
SECTION 09-00057-00-CH
PROJECT M-9003(660)
ROADWAY RECONSTRUCTION AND
TRAFFIC SIGNAL MODERNIZATION
VILLAGE OF ELK GROVE VILLAGE
COOK COUNTY
C-91-617-10

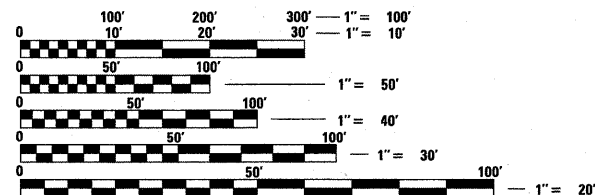


LOCATION OF SECTION INDICATED THIS: - [Black Rectangle] -

DESIGN SPEED:
IL ROUTE 83 - 50 MPH
PRATT BOULEVARD - 35 MPH

POSTED SPEED:
IL ROUTE 83 - 45 MPH
PRATT BOULEVARD - 30 MPH

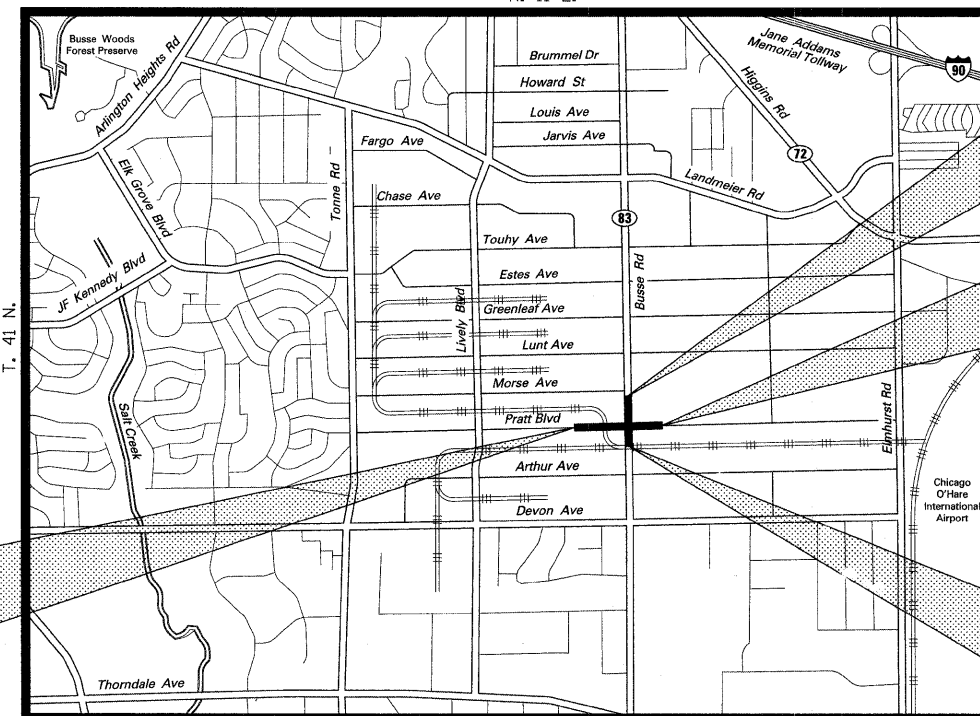
DESIGN DESIGNATIONS:
IL ROUTE 83 - 53,000 (2030) ARTERIAL 10.11 (HMA OVERLAY-15)
PRATT BOULEVARD - 9,000 (2030) COLLECTOR 5.08 (PCC-20)



FULL SIZE PLANS HAVE BEEN PREPARED USING STANDARD
ENGINEERING SCALES. REDUCED SIZED PLANS WILL NOT
CONFORM TO STANDARD SCALES. IN MAKING MEASUREMENTS
ON REDUCED PLANS, THE ABOVE SCALES MAY BE USED.

J.U.L.I.E.
JOINT UTILITY LOCATION INFORMATION FOR EXCAVATION
1-800-892-0123 OR 811

CONTRACT NO. 63523



IMPROVEMENT BEGINS
STA. 401+27.62
PRATT BOULEVARD

IMPROVEMENT ENDS
STA. 82+50.53
ILLINOIS ROUTE 83

IMPROVEMENT ENDS
STA. 415+68.82
PRATT BOULEVARD

IMPROVEMENT BEGINS
STA. 70+95.10
ILLINOIS ROUTE 83

PROJECT LENGTH:
IL ROUTE 83 - 1,155.43 FT. (0.219 MILE) (NET AND GROSS)
PRATT BOULEVARD - 1,441.20 FT. (0.273 MILE) (NET AND GROSS)
TOTAL - 2,596.63 FT (0.492 MILE) (NET AND GROSS)

LOCATION MAP
NOT TO SCALE

3RD P.M., ELK GROVE TOWNSHIP



SIGNED [Signature] DATE 10-21-10 EXPIRES 11-30-2011

FOR DRAWINGS 1-51, 70-103



SIGNED [Signature] DATE 10/21/10 EXPIRES 11-30-2011

FOR DRAWINGS 52-64

STATE OF ILLINOIS
DEPARTMENT OF TRANSPORTATION
DIVISION OF HIGHWAYS

APPROVED OCTOBER 21 2010
Mary Jo Pyle
ACTING DIRECTOR OF ENGINEERING AND COMMUNITY DEVELOPMENT

PASSED NOVEMBER 4 2010
Chet Christoffel
DISTRICT ONE ENGINEER OF LOCAL ROADS & STREETS

RELEASING FOR BID
BASED ON LIMITED
REVIEW November 4 2010
D. Mall
DEPUTY DIRECTOR OF HIGHWAYS, REGION ONE ENGINEER

**PRINTED BY THE AUTHORITY
OF THE STATE OF ILLINOIS**



SIGNED [Signature] DATE 10/21/10 EXPIRES 11-30-2011
FOR DRAWINGS 65-69

CIVILTECH
450 E. Devon Ave, Suite 300 - Itasca, Illinois 60143
Tel: 630.773.3900 - Fax: 630.773.3975
www.civiltechinc.com

PROGRAM AND OFFICE ENGINEER: CHARLES F. RIDDLE, P.E. (847) 705-4406
CONSULTANT ENGINEER: DAVID KREEGER, P.E. CIVILTECH ENGINEERING, INC.