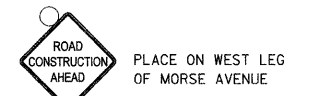
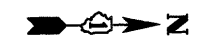


| | |
|-------------|--|
| DATE | |
| BY | |
| REVISIONS | |
| NO. | |
| DESCRIPTION | |
| DATE | |
| BY | |
| REVISIONS | |
| NO. | |
| DESCRIPTION | |
| DATE | |
| BY | |
| REVISIONS | |
| NO. | |
| DESCRIPTION | |
| DATE | |
| BY | |
| REVISIONS | |
| NO. | |
| DESCRIPTION | |
| DATE | |
| BY | |
| REVISIONS | |
| NO. | |
| DESCRIPTION | |

| | |
|-------------|--|
| DATE | |
| BY | |
| REVISIONS | |
| NO. | |
| DESCRIPTION | |
| DATE | |
| BY | |
| REVISIONS | |
| NO. | |
| DESCRIPTION | |
| DATE | |
| BY | |
| REVISIONS | |
| NO. | |
| DESCRIPTION | |
| DATE | |
| BY | |
| REVISIONS | |
| NO. | |
| DESCRIPTION | |



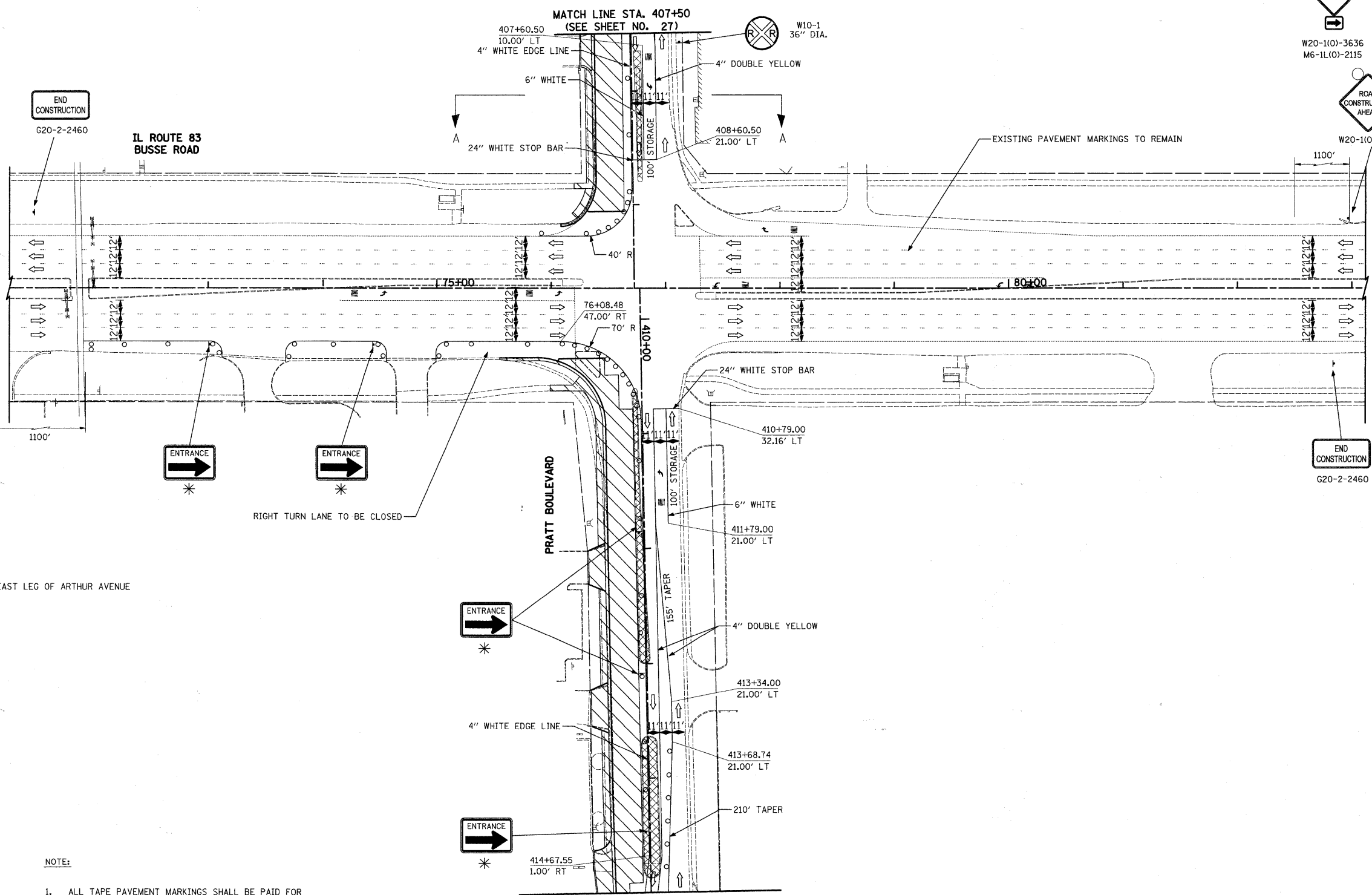
W20-1(0)-3636
M6-1L(0)-2115



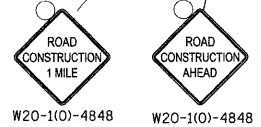
W20-1(0)-4848

W20-1(0)-4848

TEMPORARY INFORMATION SIGN-
LOCATE AS DIRECTED
BY THE ENGINEER
(SEE SHEET 79 FOR DETAILS)



TEMPORARY INFORMATION SIGN-
LOCATE AS DIRECTED BY THE ENGINEER
(SEE SHEET 79 FOR DETAILS)



W20-1(0)-4848 W20-1(0)-4848



W20-1(0)-3636
M6-1L(0)-2115

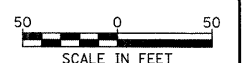
PLACE ON EAST LEG OF ARTHUR AVENUE

LEGEND

- TYPE II DRUM
- ⇨ DIRECTION OF TRAFFIC
- ⊥ TEMPORARY TRAFFIC SIGN ON PERMANENT SUPPORT
- ⊥ TYPE III BARRICADE
- ⇨ ARROW BOARD
- ▨ WORK ZONE
- ▩ TEMPORARY PAVEMENT

NOTE:

1. ALL TAPE PAVEMENT MARKINGS SHALL BE PAID FOR AS "WET TEMPORARY PAVEMENT MARKING TAPE, TYPE III".
 2. ADDITIONAL SIGNS WILL BE REQUIRED FOR LANE CLOSURES WHICH ARE NOT SHOWN ON THE PLANS BUT WILL BE REQUIRED AS PER I.D.O.T. STANDARD 70101.
- * SEE SHEET NO. 80 FOR SIGN DETAILS.



FILE NAME = ...\\cad\sheet\2363_MOT_01_01.dgn

USER NAME = kkk
PLOT SCALE = 50.0000' / IN.
PLOT DATE = 10/22/2010

DESIGNED - BLG
DRAWN - BLG
CHECKED - DJK
DATE - 10-22-10

REVISED -
REVISED -
REVISED -
REVISED -

**STATE OF ILLINOIS
DEPARTMENT OF TRANSPORTATION**

**IL ROUTE 83 (BUSSE ROAD) AND PRATT BOULEVARD
MAINTENANCE OF TRAFFIC - STAGE 1**

SCALE: 1" = 50' SHEET NO. 1 OF 2 SHEETS

| F.A.P. RTE. | SECTION | COUNTY | TOTAL SHEETS | SHEET NO. |
|---|----------------|--------|--------------|-----------|
| 334 | 09-00057-00-CH | COOK | 103 | 26 |
| CONTRACT NO. 63523 | | | | |
| FED. ROAD DIST. NO. 1 ILLINOIS FED. AID PROJECT M-9003660 | | | | |