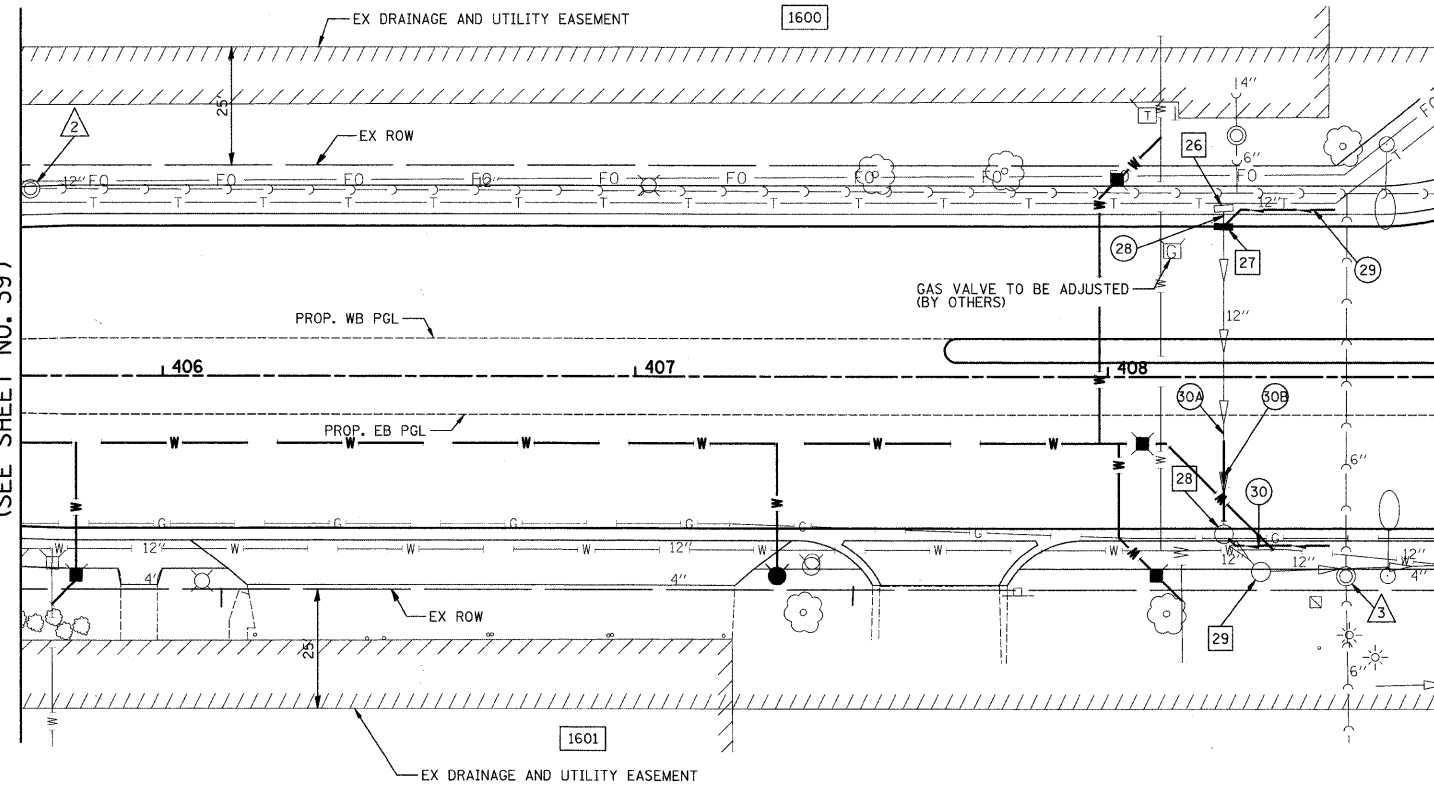


DATE	
BY	
REVIEWED	
PLANNED	
NOTE BOOK	
NO.	
ALIGNED	
CHECKED	
FILE NAME	

DATE	
BY	
REVIEWED	
PLANNED	
NOTE BOOK	
NO.	
ALIGNED	
CHECKED	
FILE NAME	

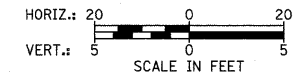
MATCH LINE STA. 405+70
(SEE SHEET NO. 39)



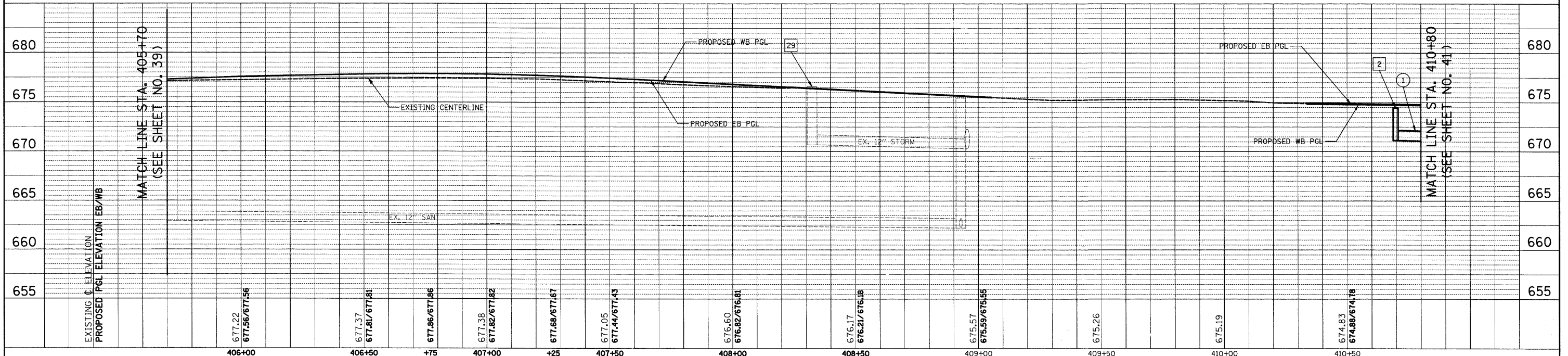
MATCH LINE STA. 408+70
(SEE SHEET NO. 37)

- 26 STA. 408+25, 35.9' LT
INLET TO BE REMOVED
- 27 STA. 408+24.60, 32.0' LT
INLET T-A,
TYPE 24 F & G
RIM = 676.01
INV = 672.71 (EX 12" S)
INV = 672.71 (4" NE)
- 28 STA. 408+25, 33.2' RT
CB TO BE ADJUSTED
W/ NEW TYPE 24 F & G
EX RIM = 676.04
RIM = 676.04
INV = 672.54 (4" E)
- 29 STA. 408+32, 41.1' RT
CB TO BE ADJUSTED
W/ NEW TYPE 1 FR., C.L.
EX RIM = 676.59
RIM = 676.45
- 28 4' - 12" S.S. REMOVAL
T.B.F. = 0.8 CU. YD.
- 29 25' - PIPE UNDERDRAIN, FABRIC
LINED TRENCH 4"
- 30 25' - PIPE UNDERDRAIN, FABRIC
LINED TRENCH 4"
- 50A 17' - 12" S.S. REMOVAL
T.B.F. = 0.0 CU. YD.
- 50B 17' - 12" S.S., W.M.R. @ 2.3%
T.B.F. = 4.8 CU. YD.

- 2 STA. 405+72, 39.9' LT
SAN. MH TO BE ADJ
EX RIM = 677.12
PR RIM = 677.31
- 3 STA. 408+50, 42.0' RT
SAN. MH TO BE ADJ
EX RIM = 675.80
PR RIM = 676.25



PRATT BOULEVARD



MATCH LINE STA. 410+80
(SEE SHEET NO. 41)

FILE NAME = ...\\2363\cod\sheet\2363.DU_05.dgn	USER NAME = k+k	DESIGNED - BLG	REVISED -	STATE OF ILLINOIS DEPARTMENT OF TRANSPORTATION	IL ROUTE 83 (BUSSE ROAD) AND PRATT BOULEVARD DRAINAGE AND UTILITIES	F.A.P. RTE. 334	SECTION 09-00057-00-CH	COUNTY COOK	TOTAL SHEETS 103	SHEET NO. 40	
PLOT SCALE = 20.0000' / IN.	CHECKED - DJK	REVISED -	SCALE: 1" = 20'			SHEET NO. 5 OF 6 SHEETS	STA. 405+70.00 TO STA. 408+70.00	CONTRACT NO. 63523			
PLOT DATE = 11/3/2010	DATE - 10-22-10	REVISED -	FED. ROAD DIST. NO. 1 ILLINOIS FED. AID PROJECT M-9003(660)								