

DATE: \_\_\_\_\_ BY: \_\_\_\_\_  
 SURVEYED: \_\_\_\_\_  
 GRADES CHECKED: \_\_\_\_\_  
 B.M. NOTED: \_\_\_\_\_  
 PROFILE: \_\_\_\_\_  
 NO. \_\_\_\_\_

DATE: \_\_\_\_\_ BY: \_\_\_\_\_  
 SURVEYED: \_\_\_\_\_  
 GRADES CHECKED: \_\_\_\_\_  
 B.M. NOTED: \_\_\_\_\_  
 PROFILE: \_\_\_\_\_  
 NO. \_\_\_\_\_

PLAN  
 SURVEYED: \_\_\_\_\_  
 ALIGNMENT CHECKED: \_\_\_\_\_  
 RT. OF WAY CHECKED: \_\_\_\_\_  
 DATE: \_\_\_\_\_  
 BY: \_\_\_\_\_

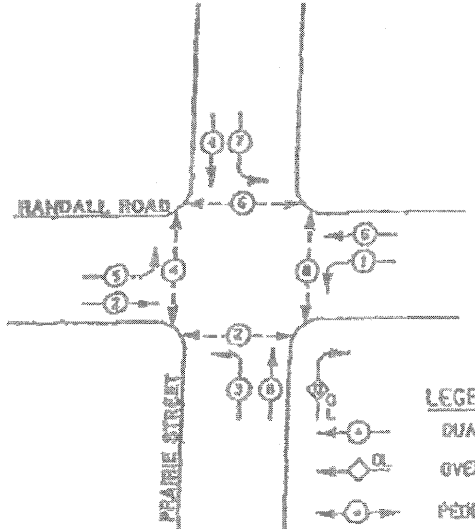
DATE: \_\_\_\_\_ BY: \_\_\_\_\_  
 SURVEYED: \_\_\_\_\_  
 GRADES CHECKED: \_\_\_\_\_  
 B.M. NOTED: \_\_\_\_\_  
 PROFILE: \_\_\_\_\_  
 NO. \_\_\_\_\_

DATE: \_\_\_\_\_ BY: \_\_\_\_\_  
 SURVEYED: \_\_\_\_\_  
 GRADES CHECKED: \_\_\_\_\_  
 B.M. NOTED: \_\_\_\_\_  
 PROFILE: \_\_\_\_\_  
 NO. \_\_\_\_\_

EXISTING CONTROLLER SEQUENCE

RIGHT TURN OVERLAP PHASE DESIGNATION

OVERLAP LETTER	PERMISSIVE PHASE	PROTECTED PHASE
D	6	1



PHASE DESIGNATION DIAGRAM

CABLE PLAN LEGEND

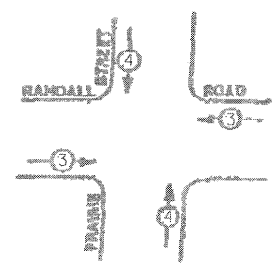
EXISTING	PROPOSED
[Symbol]	[Symbol] 8" (200MM) TRAFFIC SIGNAL SECTION
[Symbol]	[Symbol] 12" (300MM) TRAFFIC SIGNAL SECTION
[Symbol]	[Symbol] 12" (300MM) PEDESTRIAN SIGNAL SECTION
[Symbol]	[Symbol] 12" (300MM) PEDESTRIAN SIGNAL SECTION
[Symbol]	[Symbol] CONTROLLER CABINET
[Symbol]	[Symbol] SERVICE INSTALLATION
[Symbol]	[Symbol] VEHICLE DETECTOR, INDUCTION LOOP
[Symbol]	[Symbol] MAGNETIC DETECTOR
[Symbol]	[Symbol] EMERGENCY VEHICLE LIGHT DETECTOR
[Symbol]	[Symbol] CONFIRMATION BEACON
[Symbol]	[Symbol] PUSHBUTTON DETECTOR
[Symbol]	[Symbol] DENOTES NUMBER OF CONDUCTORS. ALL CABLE NO. 14 EXCEPT AS INDICATED. ALL LOOP DETECTOR CABLE TO BE SHIELDED.
[Symbol]	[Symbol] SIGNAL FACE WITH BACKPLATE
[Symbol]	[Symbol] * INDICATES PROGRAMMED HEAD

LEGEND

- [Symbol] DUAL ENTRY PHASE
- [Symbol] OVERLAP
- [Symbol] PEDESTRIAN PHASE

\* NUMBER REFERS TO ASSOCIATED PHASE

EXISTING EMERGENCY VEHICLE PREEMPTION SEQUENCE

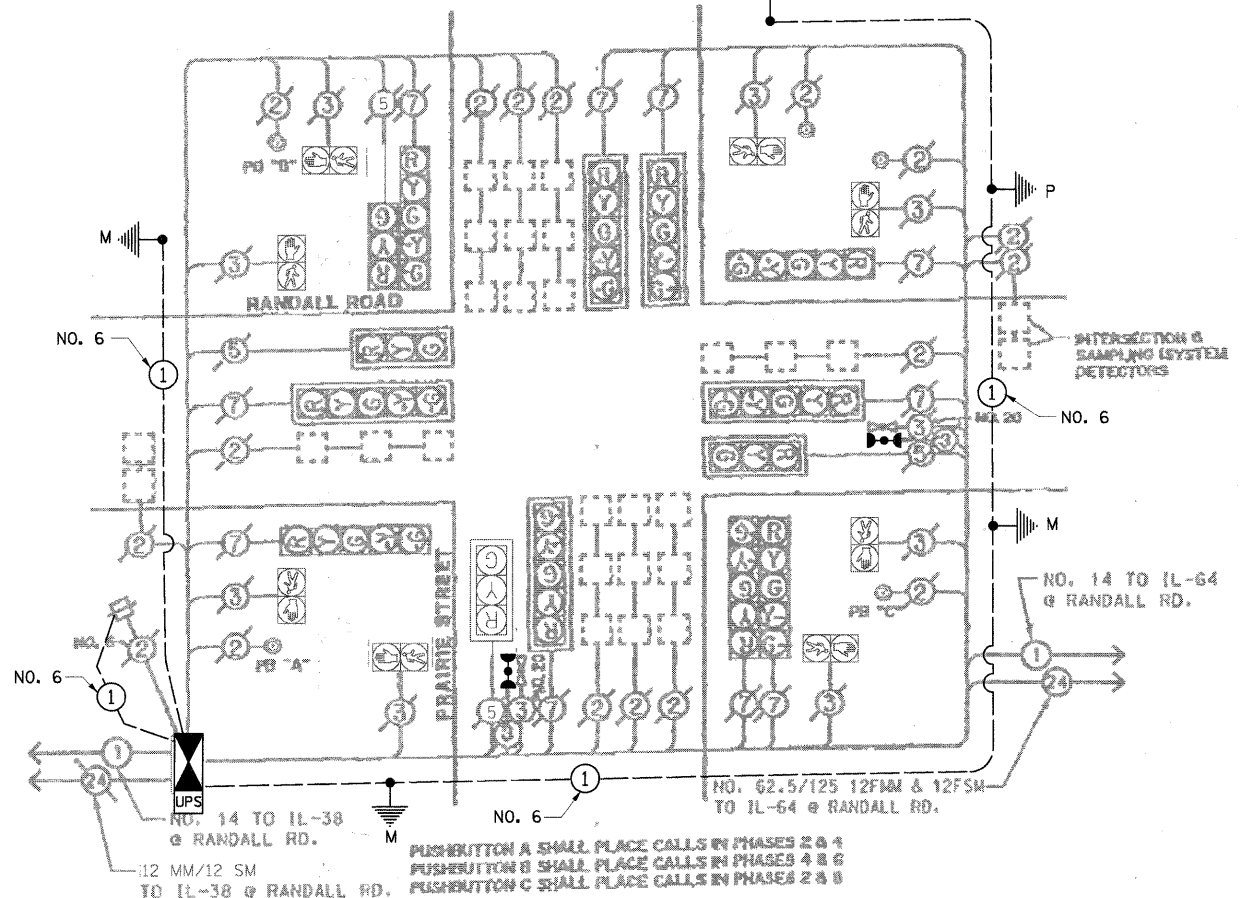


PROPOSED PRIORITY LANE

PRIORITY LANE INTERVAL	3	4
MOVEMENT	[Symbol]	[Symbol]



CABLE PLAN



SCHEDULE OF QUANTITIES

ITEM	UNIT	TOTAL
PORTLAND CEMENT CONCRETE SIDEWALK 5 INCH	SQ FT	24
MAINTENANCE OF EXISTING TRAFFIC SIGNAL INSTALLATION	EACH	1
FULL-ACTUATED CONTROLLER AND TYPE IV CABINET, SPECIAL	EACH	1
INDUCTIVE LOOP DETECTOR	EACH	11
RELOCATE EXISTING EMERGENCY VEHICLE PRIORITY SYSTEM, PHASING UNIT	EACH	1
REMOVE EXISTING TRAFFIC SIGNAL EQUIPMENT	EACH	1
GROUNDING EXISTING HANDHOLE FRAME AND COVER	EACH	8
UNINTERRUPTIBLE POWER SUPPLY	EACH	1
ELECTRIC CABLE IN CONDUIT, GROUNDING NO. 6 1C	FOOT	660
TERMINATE FIBER IN CABINET	EACH	6
SPLICE FIBER IN CABINET	EACH	6
UPS BATTERY BACK-UP CABINET	EACH	1
ETHERNET MANAGED SWITCH, TYPE 1	EACH	1

CONSTRUCTION NOTES:

- REMOVE EXISTING CONTROLLER AND CABINET. INSTALL NEW CONTROLLER AND TYPE IV CABINET ON EXISTING FOUNDATION.
- ALL EXISTING CONFIRMATION BEACONS SHALL BE RETROFITTED WITH L.E.D. INDICATIONS. THIS WORK SHALL BE INCLUDED IN THE COST FOR THE PAY ITEM: UNINTERRUPTIBLE POWER SUPPLY.
- ADD NEW FIBER OPTIC INTERCONNECT CENTER.
- ADD NEW UNINTERRUPTIBLE POWER SUPPLY.
- INSTALL NEW 50"X67" PAD FOR UNINTERRUPTIBLE POWER SUPPLY.
- ADD NEW GROUNDING