

BY DATE
 SURVEYED ALIGNED CHECKED
 PLAN NOTE BOOK BY, OF WAY CHECKED
 NO. NO. NO. FILE NAME
 PROFILE SURVEYED GRADES CHECKED
 NO. NOTE BOOK BY, NOTED
 NO. NO. NO. STRUCTURE NOTATIONS CHFD

CHRISTOPHER B. BURKE ENGINEERING LTD.
 5975 West Higgins Road, Suite 600
 Chicago, Illinois 60638
 (815) 823-9500

CONSTRUCTION NOTES:

- REMOVE EXISTING CONTROLLER AND CABINET. INSTALL NEW CONTROLLER AND TYPE IV CABINET ON EXISTING FOUNDATION.
- ALL EXISTING CONFIRMATION BEACONS SHALL BE RETROFITTED WITH L.E.D. INDICATIONS. THIS WORK SHALL BE INCLUDED IN THE COST FOR THE PAY ITEM: UNINTERRUPTIBLE POWER SUPPLY.
- ADD NEW UNINTERRUPTIBLE POWER SUPPLY AND CABINET ENCLOSURE.
- INSTALL NEW 50"X67" PAD FOR UNINTERRUPTIBLE POWER SUPPLY.
- AUTOMATIC ENFORCEMENT CAMERAS ARE INSTALLED AT THIS INTERSECTION. THE CONTRACTOR MUST CONTACT THE CITY OF GENEVA'S ENGINEER TO COORDINATE ANY POTENTIAL IMPACTS THE MODIFICATIONS SHOWN ON THESE PLANS WILL HAVE TO THESE CAMERAS. CONTACT INFORMATION IS CITY OF GENEVA (630) 232-1503. THE RLR CAMERAS WILL BE DEACTIVATED WHILE THE TRAFFIC SIGNAL IS UNDER THE CONTRACTOR'S MAINTENANCE. THEY WILL BE RE-ACTIVATED AFTER THE TRANSFER FROM THE CONTRACTOR.
- ADD NEW GROUNDING.

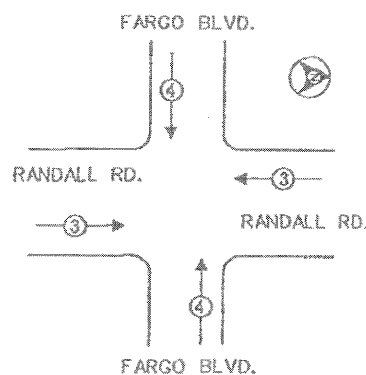
SCHEDULE OF QUANTITIES

ITEM	UNIT	TOTAL
PORTLAND CEMENT CONCRETE SIDEWALK 5 INCH	SQ FT	24
MAINTENANCE OF EXISTING TRAFFIC SIGNAL INSTALLATION	EACH	1
FULL-ACTUATED CONTROLLER AND TYPE IV CABINET, SPECIAL	EACH	1
INDUCTIVE LOOP DETECTOR	EACH	8
RELOCATE EXISTING EMERGENCY VEHICLE PRIORITY SYSTEM, PHASING UNIT	EACH	1
REMOVE EXISTING TRAFFIC SIGNAL EQUIPMENT	EACH	1
GROUNDING EXISTING HANDHOLE FRAME AND COVER	EACH	7
UNINTERRUPTIBLE POWER SUPPLY	EACH	1
ELECTRIC CABLE IN CONDUIT, GROUNDING NO. 6 1C	FOOT	657
TERMINATE FIBER IN CABINET	EACH	6
SPLICE FIBER IN CABINET	EACH	6
UPS BATTERY BACK-UP CABINET	EACH	1
ETHERNET MANAGED SWITCH, TYPE 1	EACH	1

CABLE PLAN LEGEND

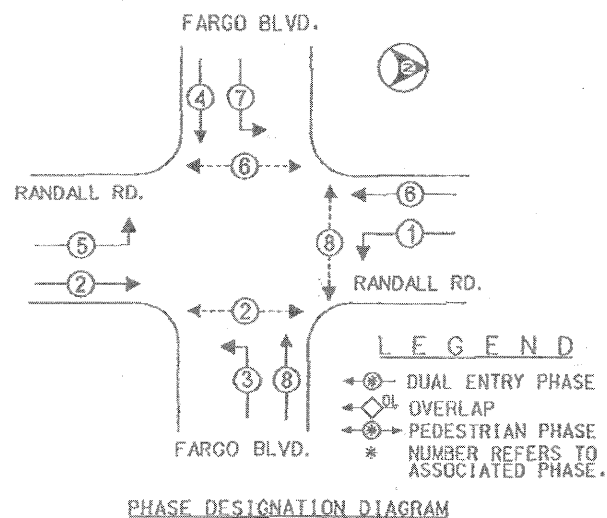
EXISTING	PROPOSED	DESCRIPTION
[Symbol]	[Symbol]	8" (200MM) TRAFFIC SIGNAL SECTION
[Symbol]	[Symbol]	12" (300MM) TRAFFIC SIGNAL SECTION
[Symbol]	[Symbol]	12" (300MM) PEDESTRIAN SIGNAL SECTION
[Symbol]	[Symbol]	12" (300MM) PEDESTRIAN SIGNAL SECTION
[Symbol]	[Symbol]	CONTROLLER CABINET
[Symbol]	[Symbol]	SERVICE INSTALLATION
[Symbol]	[Symbol]	VEHICLE DETECTOR, INDUCTIVE LOOP
[Symbol]	[Symbol]	MAGNETIC DETECTOR
[Symbol]	[Symbol]	EMERGENCY VEHICLE LIGHT DETECTOR
[Symbol]	[Symbol]	CONFIRMATION BEACON
[Symbol]	[Symbol]	PUSHBUTTON DETECTOR
[Symbol]	[Symbol]	2 DENOTES NUMBER OF CONDUCTORS ALL CABLE NO. 14 EXCEPT AS INDICATED. ALL LOOP DETECTOR CABLE TO BE SHIELDED
[Symbol]	[Symbol]	SIGNAL FACE WITH BACKPLATE * INDICATES PROGRAMMED HEAD
[Symbol]	[Symbol]	LUMINAIRE

EMERGENCY VEHICLE PREEMPTION SEQUENCE

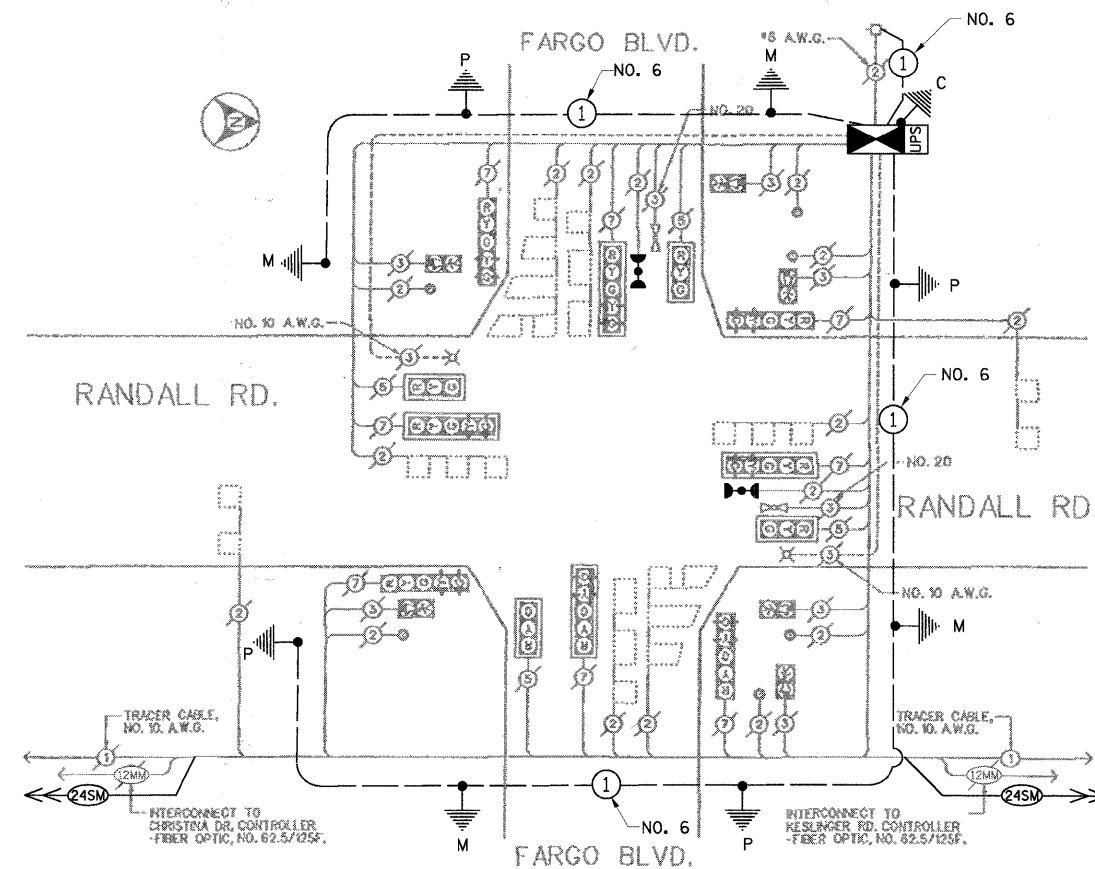


PROPOSED EMERGENCY VEHICLE PREEMPTORS		
EMERGENCY VEHICLE PREEMPTOR	3	4
MOVEMENT	←→	↑↓

CONTROLLER SEQUENCE



CABLE PLAN



THE TRAFFIC SIGNAL CONTROL EQUIPMENT FOR THIS PROJECT IS "EAGLE".



METRO TRANSPORTATION GROUP, INC.
 TRANSPORTATION PLANNING, ENGINEERING AND DESIGN
 1300 GREENBROOK, HANOVER PARK, IL 60103 PH# 630 213-1000

REVISIONS		
NO.	DATE	DESCRIPTION

CABLE PLAN, PHASE DESIGNATION DIAGRAM
 and SCHEDULE OF QUANTITIES
 RANDALL ROAD @ FARGO BLVD.
 GENEVA, ILLINOIS

FILE NAME: fargo_op.dgn	SHEET NO. 1
DATE: Apr 11 15, 1999	11
PROJECT NO. 1: 3857-00	OF 24

FILE NAME = N:\kane\county\080673\Traf\fo\025_CAB_Randall-	USER NAME = FPACTIONE	DESIGNED - ABR	REVISED -	STATE OF ILLINOIS DEPARTMENT OF TRANSPORTATION	SCHEDULE OF QUANTITIES, CABLE PLAN, PHASE DESIGNATION DIAGRAM AND EMERGENCY VEHICLE PREEMPTION SEQUENCE RANDALL ROAD AND FARGO BOULEVARD	F.A.P. RTE. 336	SECTION 09-00237-02-TL	COUNTY KANE	TOTAL SHEETS 100	SHEET NO. 25		
		DRAWN - FCP	REVISED -			SCALE:	SHEET NO. OF SHEETS	STA. -- TO STA. --	CONTRACT NO. 63525			
		CHECKED - MJT	REVISED -			ILLINOIS FED. AID PROJECT						
		DATE - AUGUST 31, 2010	REVISED -			CONTRACT NO. 63525						