

DATE: \_\_\_\_\_ BY: \_\_\_\_\_  
 SURVEYED: \_\_\_\_\_ PLOTTED: \_\_\_\_\_ CHECKED: \_\_\_\_\_  
 PLAN: \_\_\_\_\_ NO. \_\_\_\_\_  
 NOTE BOOK: \_\_\_\_\_  
 STRUCTURE NOTATIONS: \_\_\_\_\_  
 PROFILE: \_\_\_\_\_ NO. \_\_\_\_\_  
**CHRISTOPHER B. BURKE ENGINEERING LTD.**  
 9575 West Higgins Road, Suite 600  
 Rosemont, Illinois 60018  
 (847) 823-0500

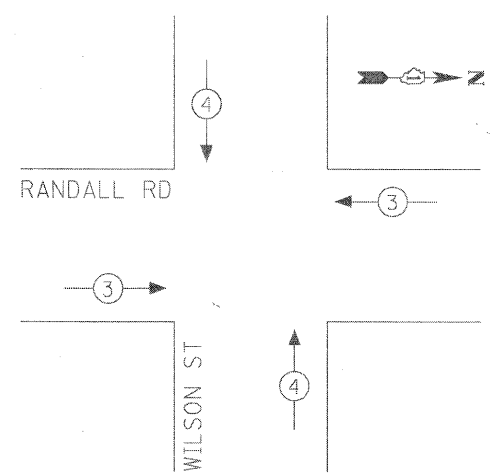
**CONSTRUCTION NOTES:**

- ① REPLACE EXISTING CONTROLLER AND MALFUNCTION MANAGEMENT UNIT.
- ② ALL EXISTING CONFIRMATION BEACONS SHALL BE RETROFITTED WITH L.E.D. INDICATIONS. THIS WORK SHALL BE INCLUDED IN THE COST FOR THE PAY ITEM: UNINTERRUPTIBLE POWER SUPPLY.
- ③ REPLACE EXISTING FIBER OPTIC INTERCONNECT CENTER.
- ④ ADD NEW UNINTERRUPTIBLE POWER SUPPLY.
- ⑤ INSTALL NEW 50"x67" PAD FOR UNINTERRUPTIBLE POWER SUPPLY.
- ⑥ ADD NEW GROUNDING.

**SCHEDULE OF QUANTITIES**

ITEM	UNIT	TOTAL
PORTLAND CEMENT CONCRETE SIDEWALK 5 INCH	SQ FT	24
MAINTENANCE OF EXISTING TRAFFIC SIGNAL INSTALLATION	EACH	1
FULL-ACTUATED CONTROLLER IN EXISTING CABINET, SPECIAL	EACH	1
REMOVE EXISTING TRAFFIC SIGNAL EQUIPMENT	EACH	1
GROUNDING EXISTING HANDHOLE FRAME AND COVER	EACH	8
UNINTERRUPTIBLE POWER SUPPLY	EACH	1
ELECTRIC CABLE IN CONDUIT, GROUNDING NO. 6 1C	FOOT	714
TERMINATE FIBER IN CABINET	EACH	6
FIBER OPTIC INTERCONNECT CENTER	EACH	1
SPLICE FIBER IN CABINET	EACH	6
UPS BATTERY BACK-UP CABINET	EACH	1
MALFUNCTION MANAGEMENT UNIT	EACH	1
ETHERNET MANAGED SWITCH, TYPE 1	EACH	1

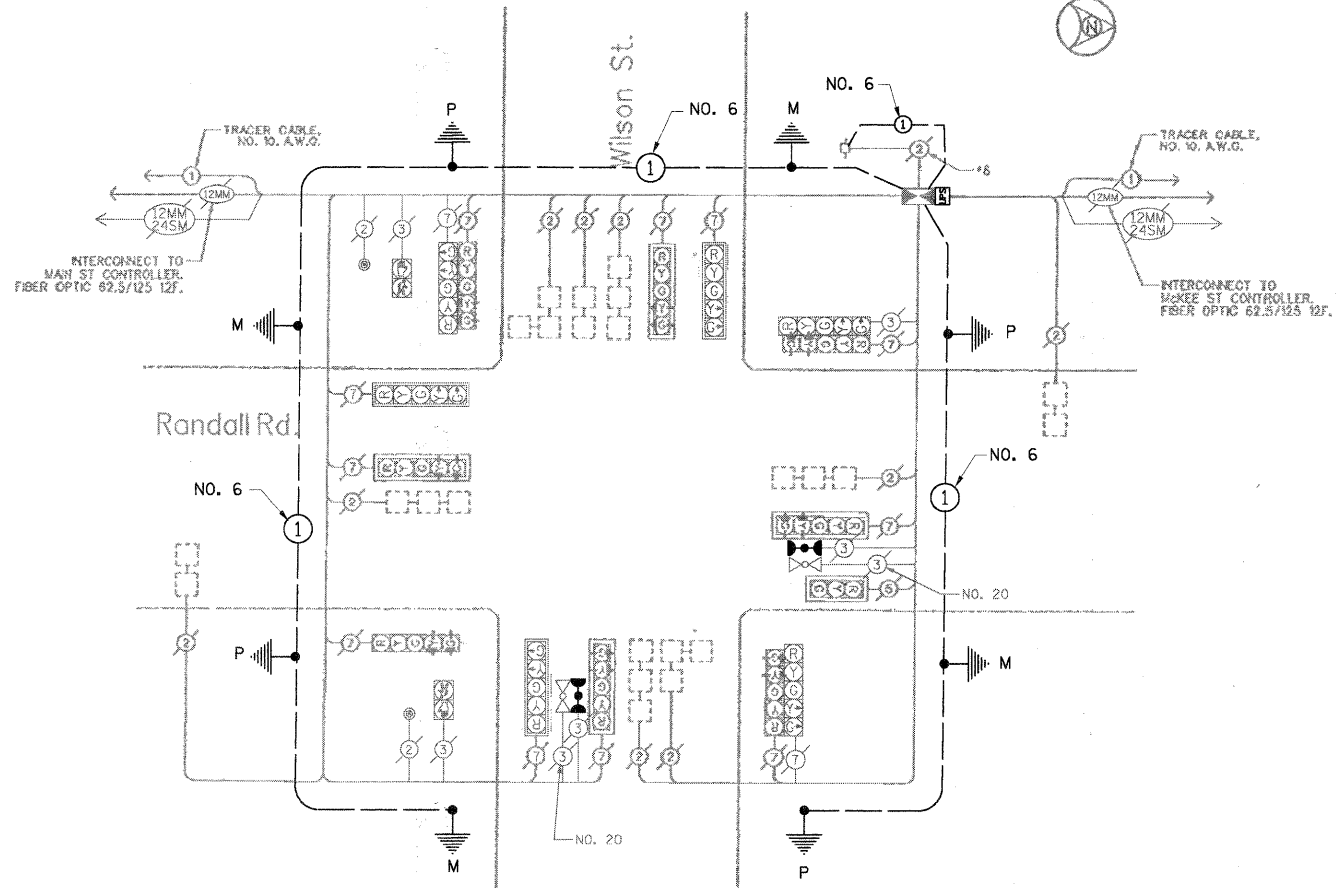
**EMERGENCY VEHICLE PREEMPTION SEQUENCE**



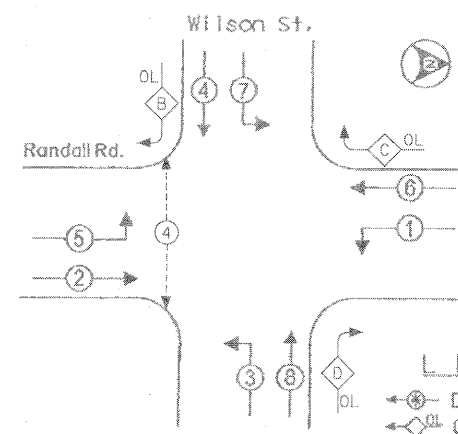
**CABLE PLAN LEGEND**

- |  |  |   |
|--|--|---|
|  |  | 8' (200MM) TRAFFIC SIGNAL SECTION   |
|  |  | 12' (300MM) TRAFFIC SIGNAL SECTION  |
|  |  | 12' (300MM) PEDESTRIAN SIGNAL SECTION   |
|  |  | CONTROLLER CABINET  |
|  |  | SERVICE INSTALLATION  |
|  |  | VEHICLE DETECTOR INDUCTION LOOP   |
|  |  | MAGNETIC DETECTOR   |
|  |  | EMERGENCY VEHICLE LIGHT DETECTOR  |
|  |  | CONFIRMATION BEACON   |
|  |  | PUSHBUTTON DETECTOR   |
|  |  | DENOTES NUMBER OF CONDUCTORS. ALL CABLE NO. 16 EXCEPT AS INDICATED. ALL LOOP DETECTOR CABLE TO BE SHIELDED. |
|  |  | SIGNAL FACE WITH BACKPLATE 7' INDICATES PROGRAMMED HEAD   |
|  |  | LUXURIANCE  |

**CABLE PLAN**



**CONTROLLER SEQUENCE**



OVERLAP LETTER	PERMISSIVE PHASE	PROTECTED PHASE
B	= 4	+ 5
C	= 6	+ 7
D	= 8	+ 1

**LEGEND**

- DUAL ENTRY PHASE
- OVERLAP
- PEDESTRIAN PHASE
- 

THE TRAFFIC SIGNAL CONTROL EQUIPMENT FOR THIS PROJECT SHALL BE "EAGLE" TO MATCH THE EXISTING ADJACENT SYSTEM.

**PHASE DESIGNATION DIAGRAM**



**METRO TRANSPORTATION GROUP, INC.**  
 TRANSPORTATION PLANNING, ENGINEERING AND DESIGN  
 1300 GREENBROOK, HANOVER PARK, IL 60103 PH# 630 213-1000

REVISIONS		
NO.	DATE	DESCRIPTION
1	04/15/99	ADD INTERCONNECT

**CABLE PLAN, PHASE DESIGNATION DIAGRAM and SCHEDULE OF QUANTITIES**  
 RANDALL RD. @ WILSON ST  
 BATAVIA, ILLINOIS

FILE NAME: wilson_cp.dgn	SHEET NO. 4
DATE: April 15, 1999	
PROJECT NO.:	