

F.A.U. RTE.	SECTION	COUNTY	TOTAL SHEETS	SHEET NO.
	10-00077-00-RS	COOK	16	1
		ILLINOIS	CONTRACT NO. 63526	

STATE OF ILLINOIS
DEPARTMENT OF TRANSPORTATION
DIVISION OF HIGHWAYS

PLANS FOR PROPOSED FEDERAL AID HIGHWAY

FOR INDEX OF SHEETS, SEE SHEET NO. 2

TRAFFIC DATA

ELDER LN, HAWTHORNE AND EMERSON ST.
2010 ADT = 400
2010 ADT = 400

DESIGN DESIGNATION
400 (30) LOCAL 0.11 (RS-20)

DESIGN SPEED = 25 MPH
POSTED SPEED = 20 MPH

HAWTHORNE ST., ELDER LN., EMERSON ST.
WAVELAND AVE. TO PACIFIC AVE.

RESURFACING
SECTION 10-00077-00-RS
PROJECT HD-HPP-4065(006)
VILLAGE OF FRANKLIN PARK
COOK COUNTY

JOB NUMBER C-91-719-10



PROJECT ENDS
STA. 2024 + 86
ELDER LN.

PROJECT ENDS
STA. 1023 + 53
HAWTHORNE ST.

PROJECT BEGINS
STA. 1000 + 16
HAWTHORNE ST.

PROJECT BEGINS
STA. 2000 + 20
ELDER LN.



PROJECT ENDS
STA. 3019 + 44
EMERSON ST.

PROJECT BEGINS
STA. 3000 + 19
EMERSON ST.

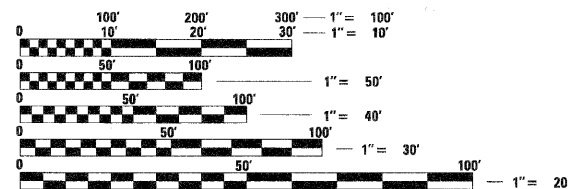
3RD PRINCIPAL MERIDIAN R 12 E LEYDEN TOWNSHIP

LOCATION MAP
SCALE

NOT TO SCALE

GROSS LENGTH = 6728 FT. = 1.3 MILE
NET LENGTH = 6602 FT. = 1.2 MILE

PROJECT IS LOCATED IN THE
VILLAGE OF FRANKLIN PARK



FULL SIZE PLANS HAVE BEEN PREPARED USING STANDARD ENGINEERING SCALES. REDUCED SIZED PLANS WILL NOT CONFORM TO STANDARD SCALES. IN MAKING MEASUREMENTS ON REDUCED PLANS, THE ABOVE SCALES MAY BE USED.

J.U.L.I.E.
JOINT UTILITY LOCATION INFORMATION FOR EXCAVATION
1-800-892-0123
OR 811



CONTRACT NO. 63526

STATE OF ILLINOIS
DEPARTMENT OF TRANSPORTATION
DIVISION OF HIGHWAYS

APPROVED 10-20 2010

[Signature]
VILLAGE OF FRANKLIN PARK, DIRECTOR OF PUBLIC WORKS

PASSED November 5 2010

[Signature]
DISTRICT 1 ENGINEER OF LOCAL ROADS & STREETS

RELEASING FOR BID
BASED ON LIMITED
REVIEW November 8 2010

[Signature]
DEPUTY DIRECTOR OF HIGHWAYS, REGION 1 ENGINEER

PROFESSIONAL ENGINEER'S SIGN & SEAL



[Signature]
THOMAS M. WALSH, P.E.
EXPIRES: 11-30-11

**PRINTED BY THE AUTHORITY
OF THE STATE OF ILLINOIS**

PROGRAM AND OFFICE ENGINEER: CHARLES F. RIDDLE, P.E. (847) 705-4406 SCHAUMBURG, IL