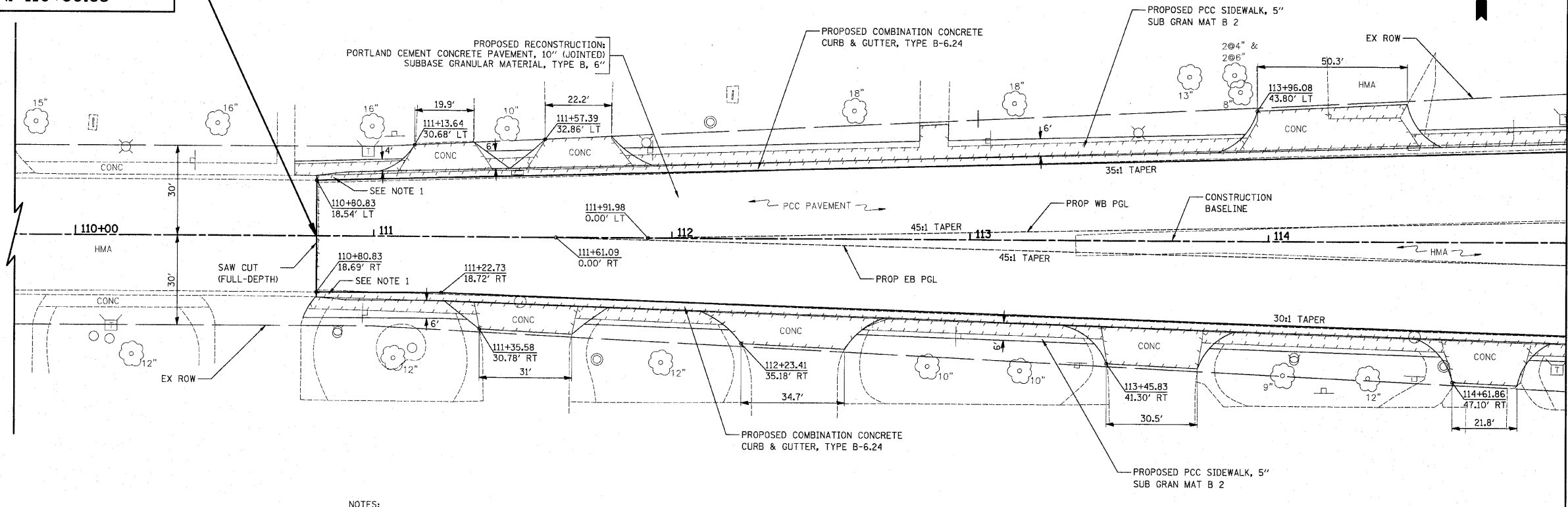
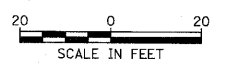


IMPROVEMENT BEGINS
STA. 110+80.83

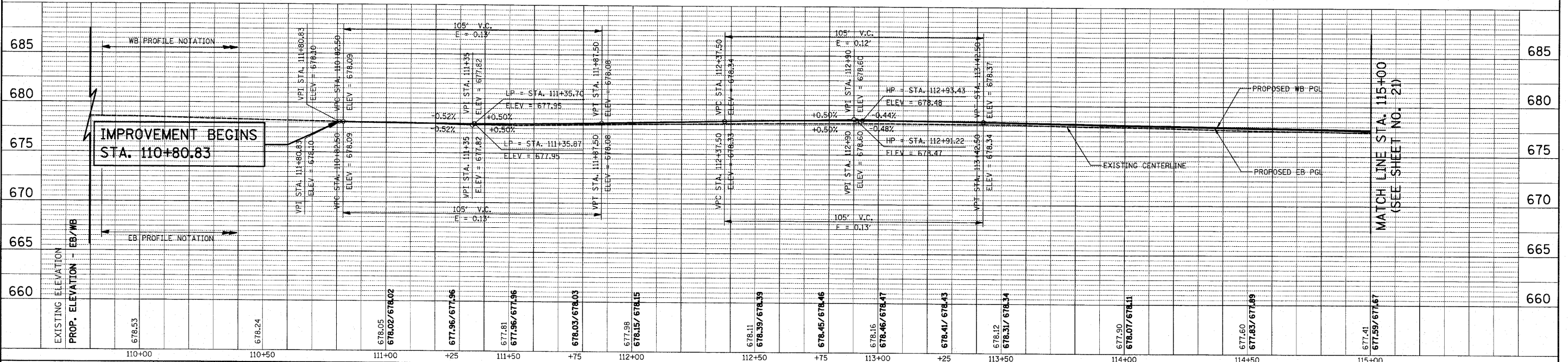


MATCH LINE STA. 115+00
(SEE SHEET NO. 21)

- NOTES:
1. TRANSITION CURB FROM B-6.24 TO MATCH EXISTING OVER 10'. PAID FOR AS "COMBINATION CONCRETE CURB & GUTTER, TYPE B-6.24".
 2. ALL DRIVEWAYS SHALL BE REPLACED WITH PCC DRIVEWAY PAVEMENT, 8 INCH, SPECIAL.
 3. SEE MAINTENANCE OF TRAFFIC AND WATERMAIN PLANS FOR REPLACEMENT REQUIRED WEST OF RECONSTRUCTION LIMITS.



GREENLEAF AVENUE



MATCH LINE STA. 115+00
(SEE SHEET NO. 21)

DATE	BY	SURVEYED
		ALIGNED
		CHECKED
		RT. OF WAY CHECKED
		PAID FILE NAME
		NO.

DATE	BY	PROFILE
		GRADES CHECKED
		STRUCTURE NOTATIONS CHECKED
		NO.

FILE NAME = ... \2362\road\sheet\2362_P&P_4.dgn	USER NAME = krx	DESIGNED - BLG	REVISED -	STATE OF ILLINOIS DEPARTMENT OF TRANSPORTATION	IL ROUTE 83 (BUSSE ROAD) AND GREENLEAF AVENUE PLAN AND PROFILE	F.A.P. RTE. 344	SECTION 09-00056-00-CH	COUNTY COOK	TOTAL SHEETS 111	SHEET NO. 20	CONTRACT NO. 63527 <small>FED. ROAD DIST. NO. 1 ILLINOIS FED. AID PROJECT M-90036599</small>
PLOT SCALE = 28.0000' / IN.	CHECKED - DJK	REVISED -	REVISED -			SCALE: 1" = 20'	SHEET NO. 4 OF 7 SHEETS	STA. 110+80.83 TO STA. 115+00.00			
PLOT DATE = 10/21/2010	DATE = 10-22-10	REVISED -	REVISED -								