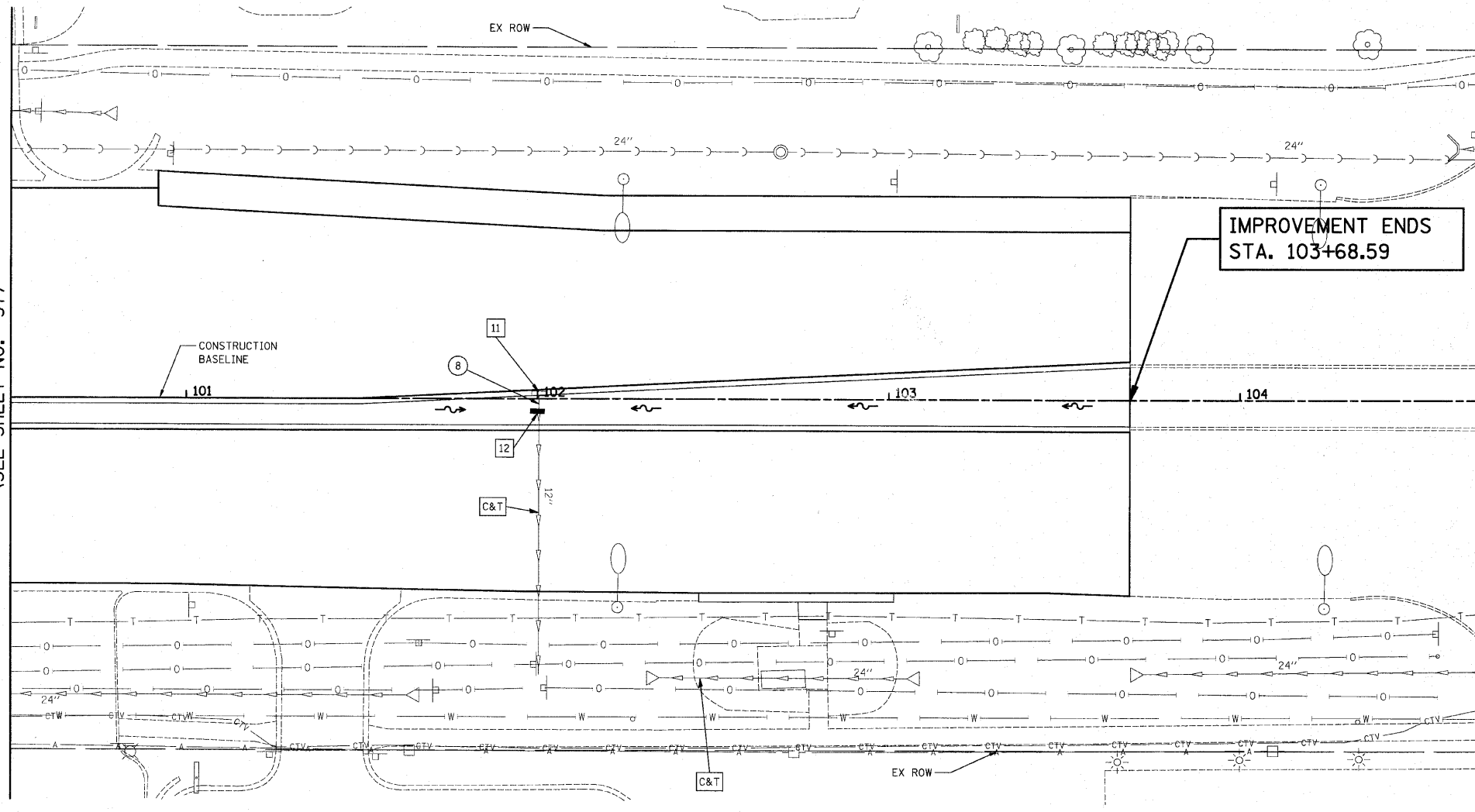


DATE	
BY	
PLANNED	
DESIGNED	
DRAWN	
CHECKED	
IN CHARGE	
NO.	

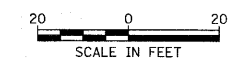
DATE	
BY	
PROFILING	
DESIGNED	
DRAWN	
CHECKED	
IN CHARGE	
NO.	

- 11 STA. 102+00, 1.5' LT INLET TO BE REMOVED
- 12 STA. 102+00, 3.5' RT INLET T-A, TYPE 1 FRAME, O.L. RIM = 679.49 INV = 676.36 (EX 12" E)
- 8 5' - 12" S.S. REMOVAL T.B.F. = 1.0 CU. YD.

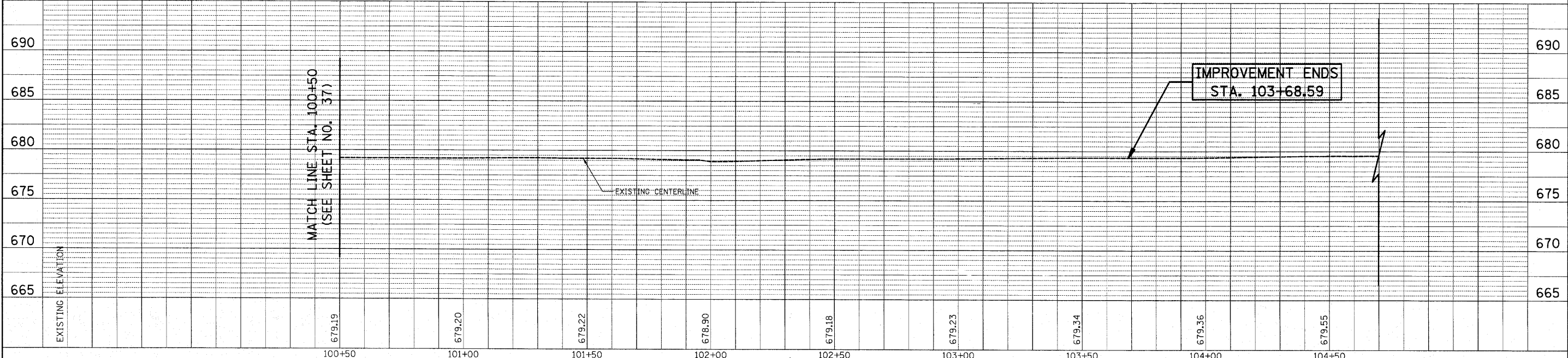
MATCH LINE STA. 100+50
(SEE SHEET NO. 37)



IMPROVEMENT ENDS
STA. 103+68.59



BUSSE ROAD



MATCH LINE STA. 100+50
(SEE SHEET NO. 37)

IMPROVEMENT ENDS
STA. 103+68.59

FILE NAME = ...2362\cad\sheet\2362.D&U.3.dgn	USER NAME = djc	DESIGNED - BLG	REVISED -	STATE OF ILLINOIS DEPARTMENT OF TRANSPORTATION	IL ROUTE 83 (BUSSE ROAD) AND GREENLEAF AVENUE DRAINAGE AND UTILITIES	F.A.P. RTE. 344	SECTION 09-00056-00-CH	COUNTY COOK	TOTAL SHEETS 111	SHEET NO. 38	
PLOT SCALE = 20.0000' / IN.	CHECKED - DJK	DATE - 10-22-10	REVISED -			SCALE: 1" = 20' SHEET NO. 3 OF 7 SHEETS STA. 100+50.00 TO STA. 103+68.59		CONTRACT NO. 63527			
PLOT DATE = 10/21/2010	DATE - 10-22-10	REVISED -	REVISED -			FED. ROAD DIST. NO. 1 ILLINOIS FED. AID PROJECT M-9003659					