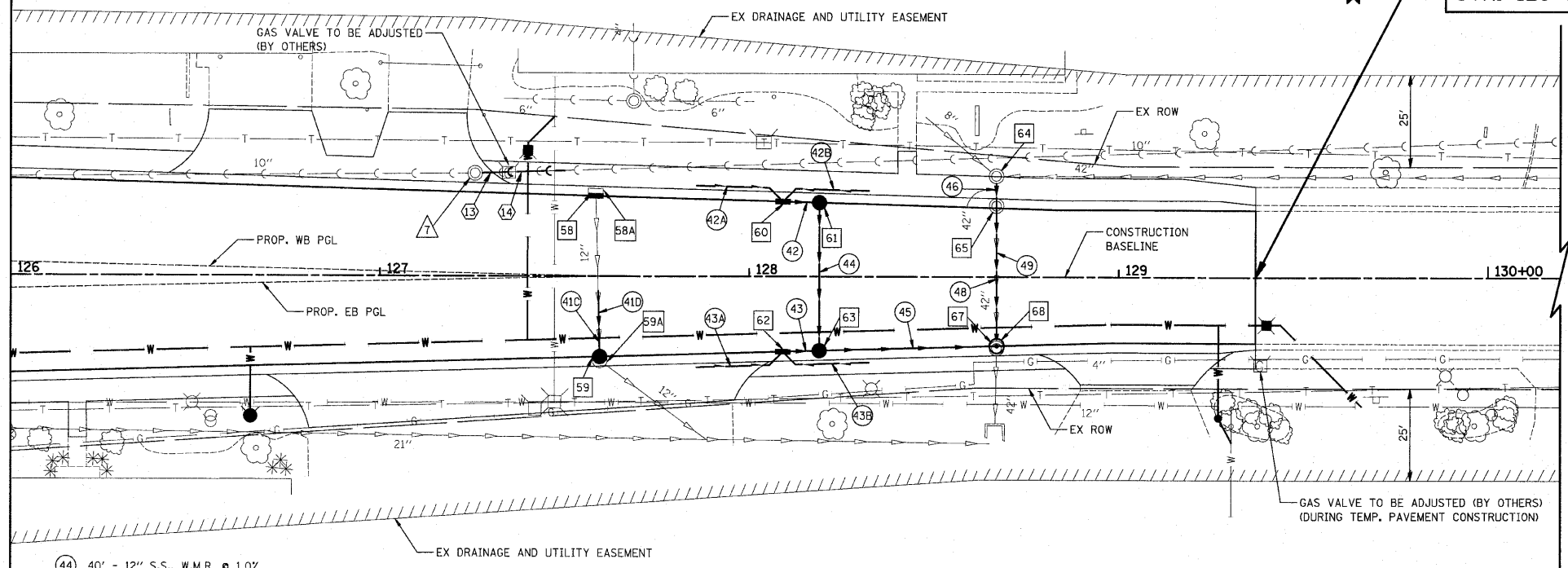


DATE	
BY	
PLAN	
SURVEYED	
ALIGNED	
CHECKED	
RT. OF WAY	
CHECKED	
NO.	
NOTE BOOK	
NO.	
FILE NAME	

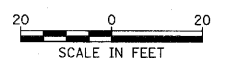
DATE	
BY	
PROFILE	
SURVEYED	
GRADES	
CHECKED	
NO.	
NOTE BOOK	
NO.	
STRUCTURE	
NOTATIONS	
CHFD	

- 58 STA. 127+58, 21.7' LT INLET, T-A TYPE 24 F & G RIM = 673.86 INV = 670.40 (EX 12" S)
- 58A STA. 127+58, 23.0' LT INLET TO BE REMOVED
- 59 STA. 127+60, 21.7' RT CB T-A, 4' DIA TYPE 24 F & G RIM = 673.85 INV = 670.80 (12" N) INV = 670.40 (EX 12" SE)
- 59A STA. 127+60, 22.7' RT CB TO BE REMOVED
- 60 STA. 128+09.18, 20.3' LT INLET, T-A TYPE 24 F & G RIM = 673.78 INV = 670.28 (12" E, 4" NW & NE)
- 61 STA. 128+19, 20.0' LT CB T-A, 4' DIA TYPE 24 F & G RIM = 673.79 INV = 670.21 (12" W) INV = 669.83 (12" S)
- 62 STA. 128+09.18, 20.3' RT INLET, T-A TYPE 24 F & G RIM = 673.78 INV = 670.28 (12" E, 4" SE & SW)
- 63 STA. 128+19, 20.0' RT CB T-A, 4' DIA TYPE 24 F & G RIM = 673.79 INV = 670.21 (12" W) INV = 669.43 (12" E & N)
- 64 STA. 128+67, 27.3' LT MH TO BE ADJUSTED EX RIM = 674.09 PR RIM = 674.44
- 65 STA. 128+67, 19.2' LT MH TO BE REMOVED
- 66 NOT USED
- 67 STA. 128+67, 19.2' RT MH TO BE REMOVED
- 68 STA. 128+67, 18.6' RT MH T-A, 6' DIA TYPE 24 F & G RIM = 673.94 INV = 668.65 (42" N & S) INV = 669.00 (12" W)
- 7 STA. 127+26, 27.8' LT SAN. MH TO BE ADJUSTED EX RIM = 673.85 PR RIM = 674.04
- 13 22' - 10" SANITARY SEWER REMOVAL T.B.F. = 0.0 CU. YD.
- 14 22' - SANITARY SEWER, TYPE 1 10" @ 0.4% T.B.F. = 7.1 CU. YD.

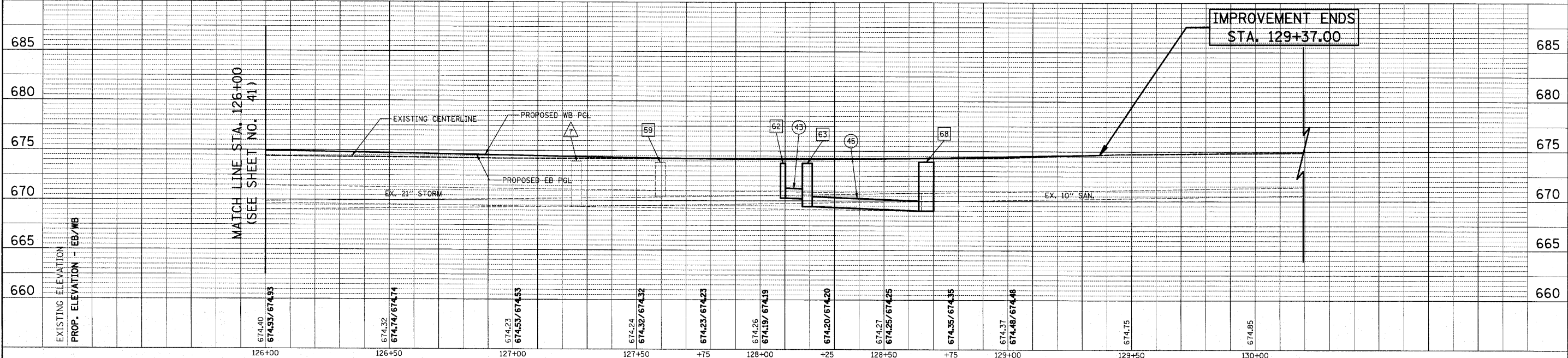
- 41C 20' - 12" S.S. REMOVAL T.B.F. = 0.0 CU. YD.
- 41D 20' - 12" S.S., W.M.R. @ 0.9% T.B.F. = 2.8 CU. YD.
- 42 7' - 12" S.S., CL. A, T-1 @ 1.0% T.B.F. = 1.1 CU. YD.
- 42A 25' - PIPE UNDERDRAIN, FABRIC LINED TRENCH 4"
- 42B 25' - PIPE UNDERDRAIN, FABRIC LINED TRENCH 4"
- 43 7' - 12" S.S., W.M.R. @ 1.0% T.B.F. = 1.1 CU. YD.
- 43A 25' - PIPE UNDERDRAIN, FABRIC LINED TRENCH 4"
- 43B 25' - PIPE UNDERDRAIN, FABRIC LINED TRENCH 4"
- 44 40' - 12" S.S., W.M.R. @ 1.0% T.B.F. = 8.6 CU. YD.
- 45 43' - 12" S.S., W.M.R. @ 1.0% T.B.F. = 11.6 CU. YD.
- 46 1' - 42" S.S. REMOVAL T.B.F. = 0.0 CU. YD.
- 47 NOT USED
- 48 38' - 42" S.S. REMOVAL T.B.F. = 0.0 CU. YD.
- 49 40' - 42" S.S., W.M.R. @ 0.1% T.B.F. = 8.0 CU. YD.



IMPROVEMENT ENDS
STA. 129+37.00



SCALE IN FEET



IMPROVEMENT ENDS
STA. 129+37.00

FILE NAME =	USER NAME = djk	DESIGNED - BLG	REVISED -	STATE OF ILLINOIS DEPARTMENT OF TRANSPORTATION	IL ROUTE 83 (BUSSE ROAD) AND GREENLEAF AVENUE DRAINAGE AND UTILITIES	F.A.P. R.T.E.	SECTION	COUNTY	TOTAL SHEETS	SHEET NO.	
...\\2362\cad\sheet\2362.D&U.7.dgn	PLOT SCALE = 28.0000' / IN.	DRAWN - BLG	REVISED -			344	09-00056-00-CH	COOK	111	42	
PLOT DATE = 11/3/2010	DATE = 10-22-10	CHECKED - DJK	REVISED -			CONTRACT NO. 63527					
		DATE = 10-22-10	REVISED -			FED. ROAD DIST. NO. 1 ILLINOIS FED. AID PROJECT M-9003(659)					