

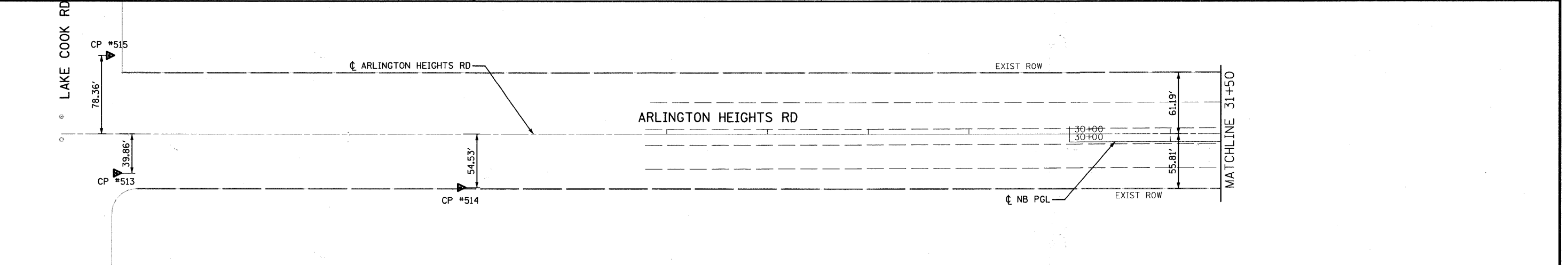
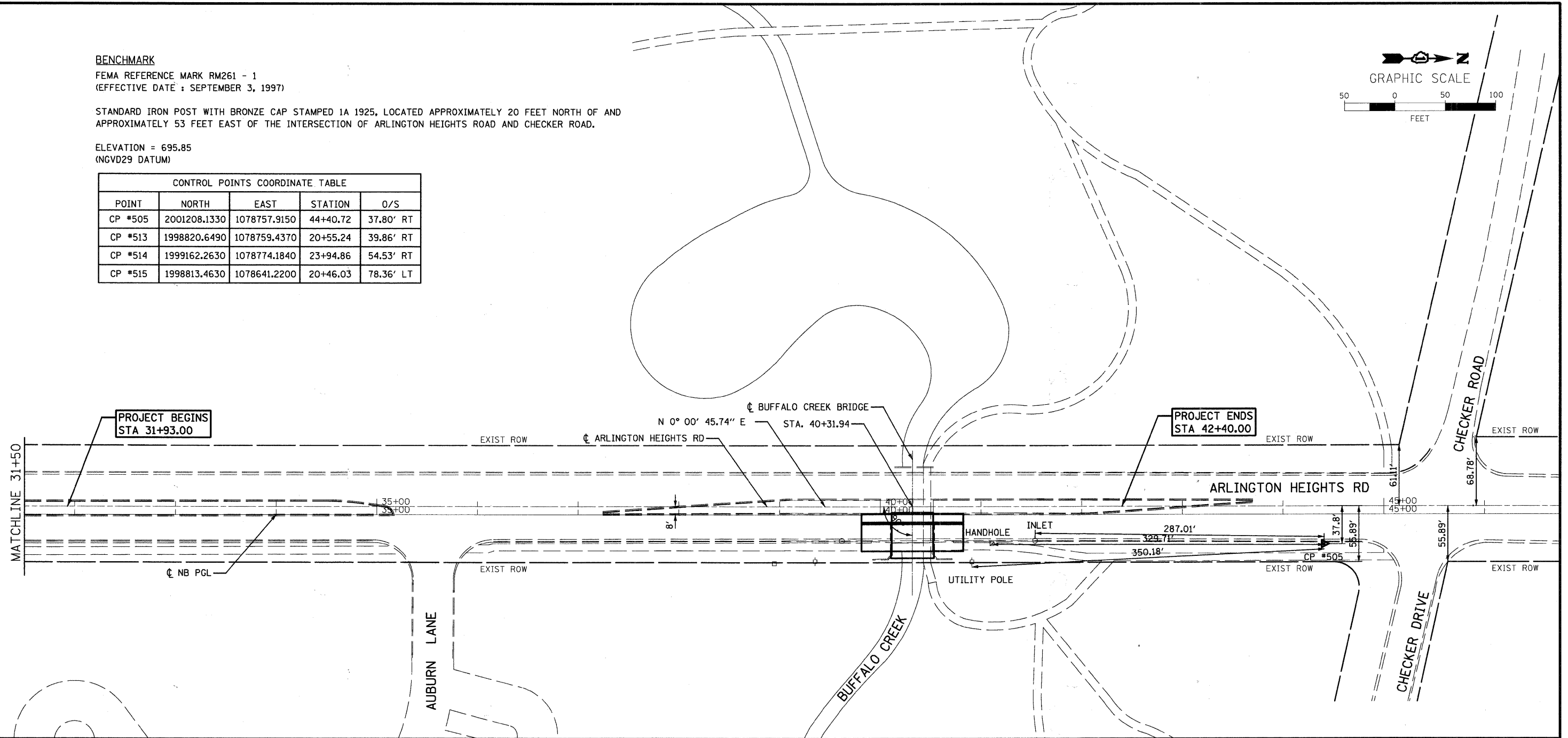
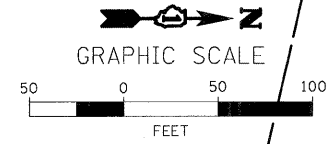
**BENCHMARK**

FEMA REFERENCE MARK RM261 - 1  
(EFFECTIVE DATE : SEPTEMBER 3, 1997)

STANDARD IRON POST WITH BRONZE CAP STAMPED 1A 1925, LOCATED APPROXIMATELY 20 FEET NORTH OF AND APPROXIMATELY 53 FEET EAST OF THE INTERSECTION OF ARLINGTON HEIGHTS ROAD AND CHECKER ROAD.

ELEVATION = 695.85  
(NGVD29 DATUM)

CONTROL POINTS COORDINATE TABLE				
POINT	NORTH	EAST	STATION	O/S
CP #505	2001208.1330	1078757.9150	44+40.72	37.80' RT
CP #513	1998820.6490	1078759.4370	20+55.24	39.86' RT
CP #514	1999162.2630	1078774.1840	23+94.86	54.53' RT
CP #515	1998813.4630	1078641.2200	20+46.03	78.36' LT



FILE NAME = LC0987-sh1-ATB.dgn	USER NAME = 320200907	DESIGNED - TC	REVISED -	<b>STATE OF ILLINOIS DEPARTMENT OF TRANSPORTATION</b>	<b>ALIGNMENT, TIES, AND BENCHMARKS STA. 31 + 93.00 TO STA 42 + 40.00</b>	F.A.U. RTE. 2626	SECTION 05-00193-04-BR	COUNTY LAKE	TOTAL SHEETS 36	SHEET NO. 6		
PLOT SCALE = 1/80.0000 "/> IN.	CHECKED - MRH	REVISED -	SCALE: 1" = 50'			SHEET NO. 1 OF 1 SHEETS	STA. 31+93.00 TO STA. 42+40.00	FED. ROAD DIST. NO. 1 ILLINOIS FED. AID PROJECT				
PLOT DATE = 10/25/2010	DATE - 10/25/2010	REVISED -										
CONTRACT NO. 63531												