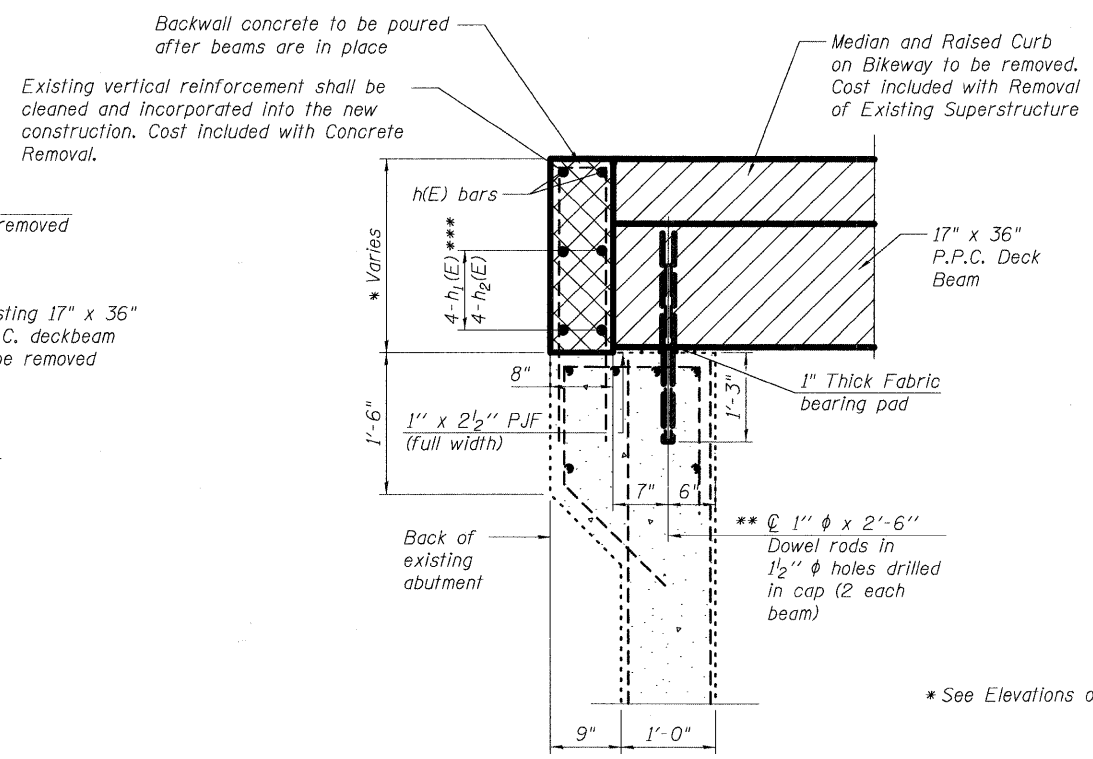
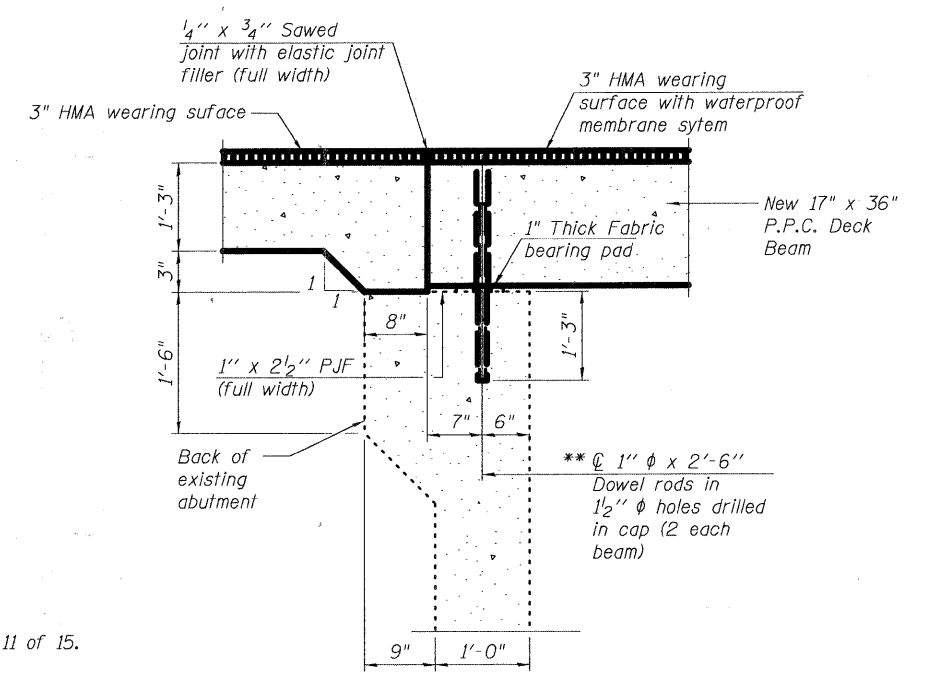


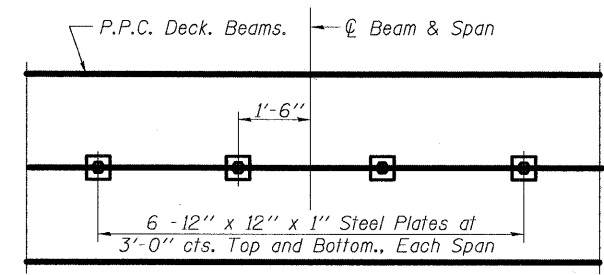
SECTION THRU ABUTMENT
 (Typical at Approach Slab)



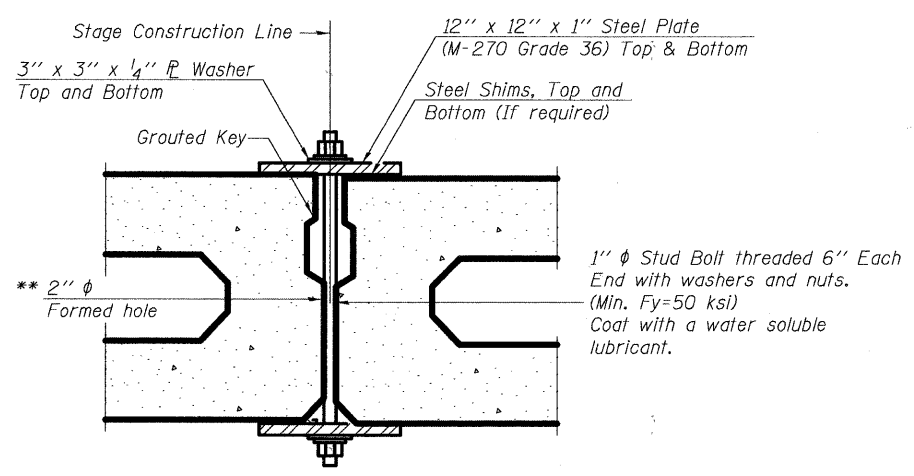
SECTION THRU ABUTMENT
 (Typical at Median & Raised Curb Along Bikeway)*



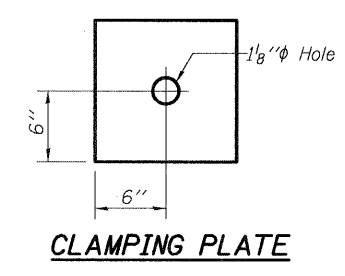
PROPOSED SECTION THRU ABUTMENT
 (Typical at Approach Slab)



PLAN



SECTION

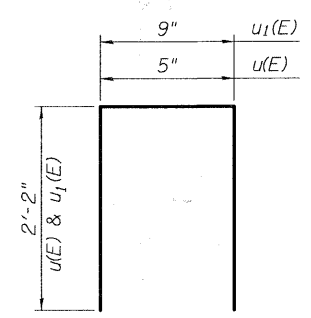


CLAMPING PLATE

SHEAR KEY CLAMPING DETAILS AT STAGE CONST. JT.

Cost included with Precast Prestressed Concrete Deck Beams.
 See Stage Construction Details for traffic lanes.

** Cast semicircular recesses in the sides of each beam adjacent to the stage construction line. These recesses should align to form a hole at the appropriate locations for the clamping device bolts.



BAR u(E) and u₁(E)

** Existing Dowel Rods shall be cut flush with the top of abutment seat. After beams have been erected, holes shall be drilled into substructure and anchor dowels placed.
 *** h(E) bars in backwall at Concrete Median
 h₁(E) bars in backwall at Sidewalk

* See Elevations on Sheets 10 and 11 of 15.

TWO BACKWALL BILL OF MATERIAL

Bar	No.	Size	Length	Shape
h(E)	12	#5	6'-2"	—
h ₁ (E)	8	#5	9'-9"	—
u(E)	6	#5	4'-9"	□
u ₁ (E)	4	#5	5'-1"	□
Approach Slab Removal		Sq. Yd.	130	
Concrete Removal		Cu. Yd.	2.1	
Concrete Structures		Cu. Yd.	1.8	
Reinforcement Bars, Epoxy Coated		Pound	420	

LEGEND:

- Limits of Approach Slab Removal
- Limits of Concrete removal
- Limits of Removal of Existing Superstructure

