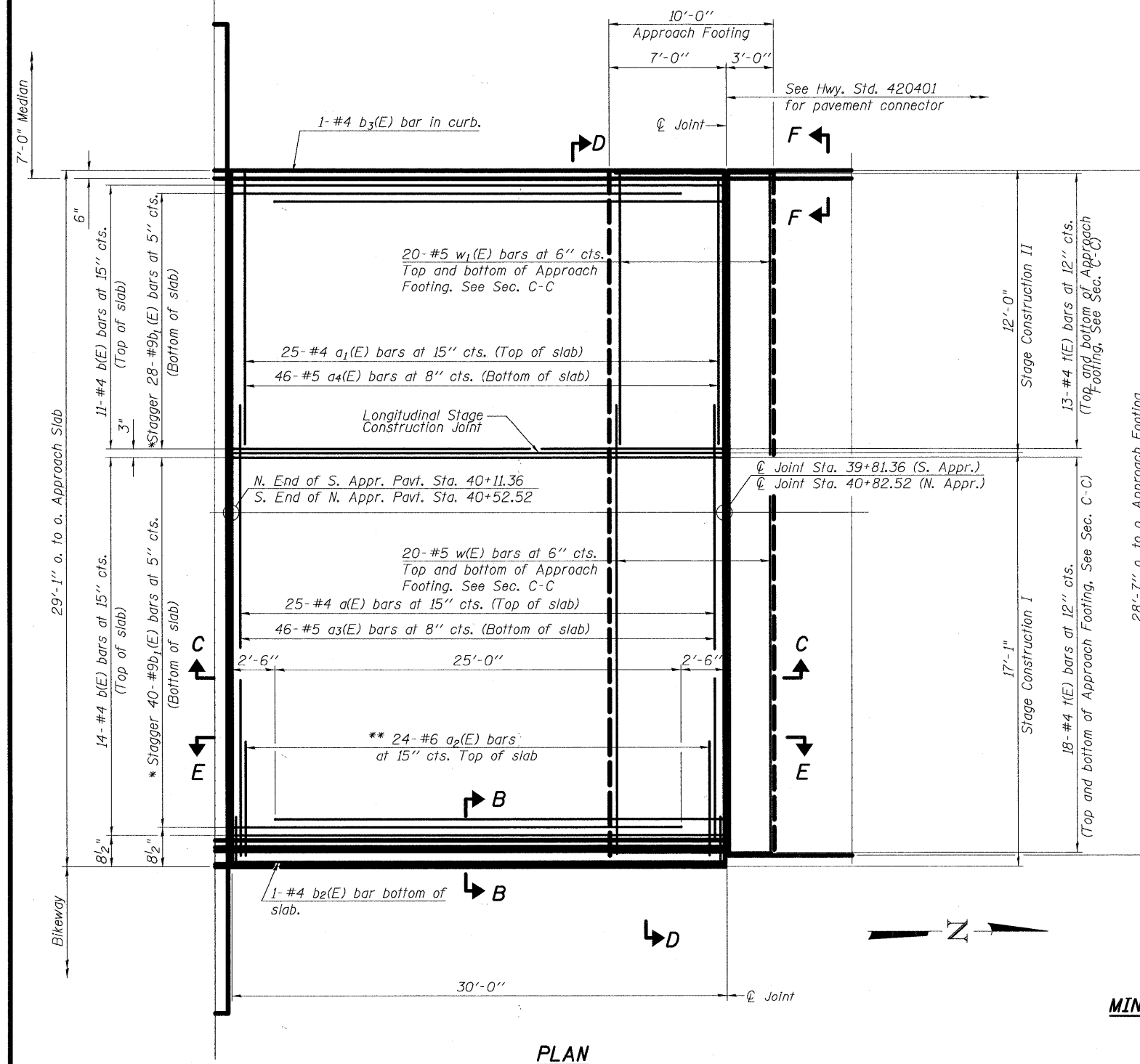


Notes:
See sheet No. 14 of 15 for Sections C-C & D-D and View E-E.
a(E) and a₁(E) bar spacings measured along ϕ Rdwy.

*** Cost included with Concrete Superstructure.

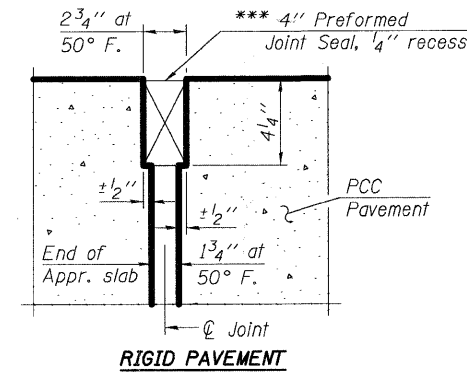


PLAN

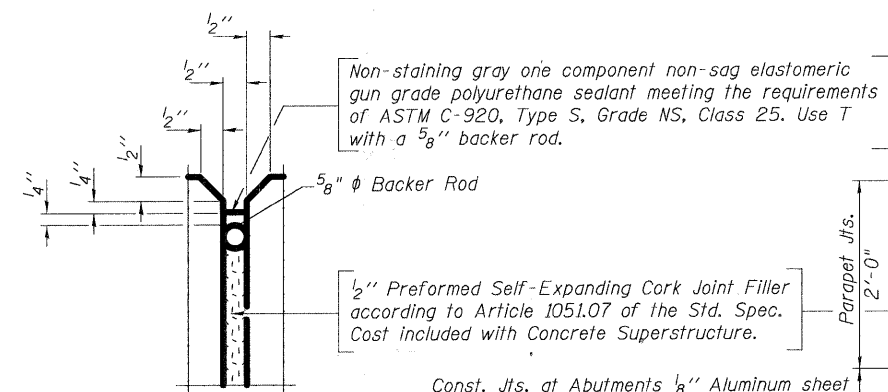
* Tilt #9 b₁(E) bars as required to maintain clearance.
** Space between a(E) bars, typ. ea. parapet.

MINIMUM BAR LAP

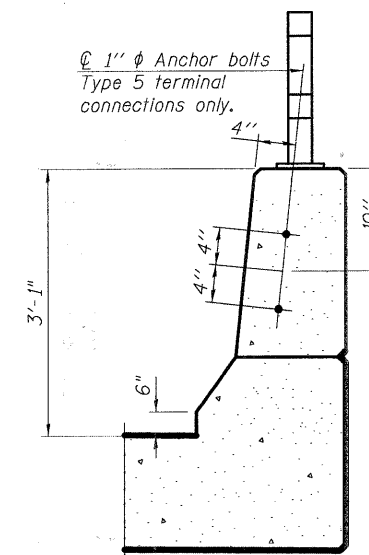
- #4 bar = 2'-0"
- #5 bar = 2'-6"
- #6 bar = 3'-0"



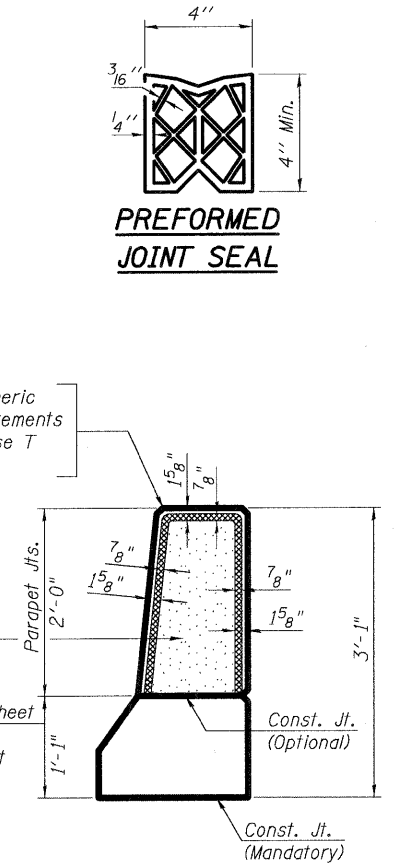
DETAIL A



PARAPET JOINT DETAILS



SECTION B-B



PREFORMED JOINT SEAL

SECTION F-F

Angle Preformed Joint Seal at 45° at curbs when req'd for drainage.



FILE NAME = 0493040-63531-013-ApprDetails1.dgn	USER NAME = 3202080907	DESIGNED - KO	REVISIONS -	STATE OF ILLINOIS DEPARTMENT OF TRANSPORTATION	APPROACH SLAB DETAILS 1 STRUCTURE NO. 049-3040 (NB)	F.A.U. RTE. 2626	SECTION 05-00193-04-BR	COUNTY LAKE	TOTAL SHEETS 36	SHEET NO. 24	
PLOT SCALE = 2.0000' / IN.	DRAWN - KO	CHECKED - WPM	REVISIONS -			SHEET NO. 13 OF 15 SHEETS					
PLOT DATE = 10/25/2010	DRAWN - KO	CHECKED - WPM	REVISIONS -			ILLINOIS FED. AID PROJECT					
						CONTRACT NO. 63531					