

24" **RAMP CLOSED** 12"

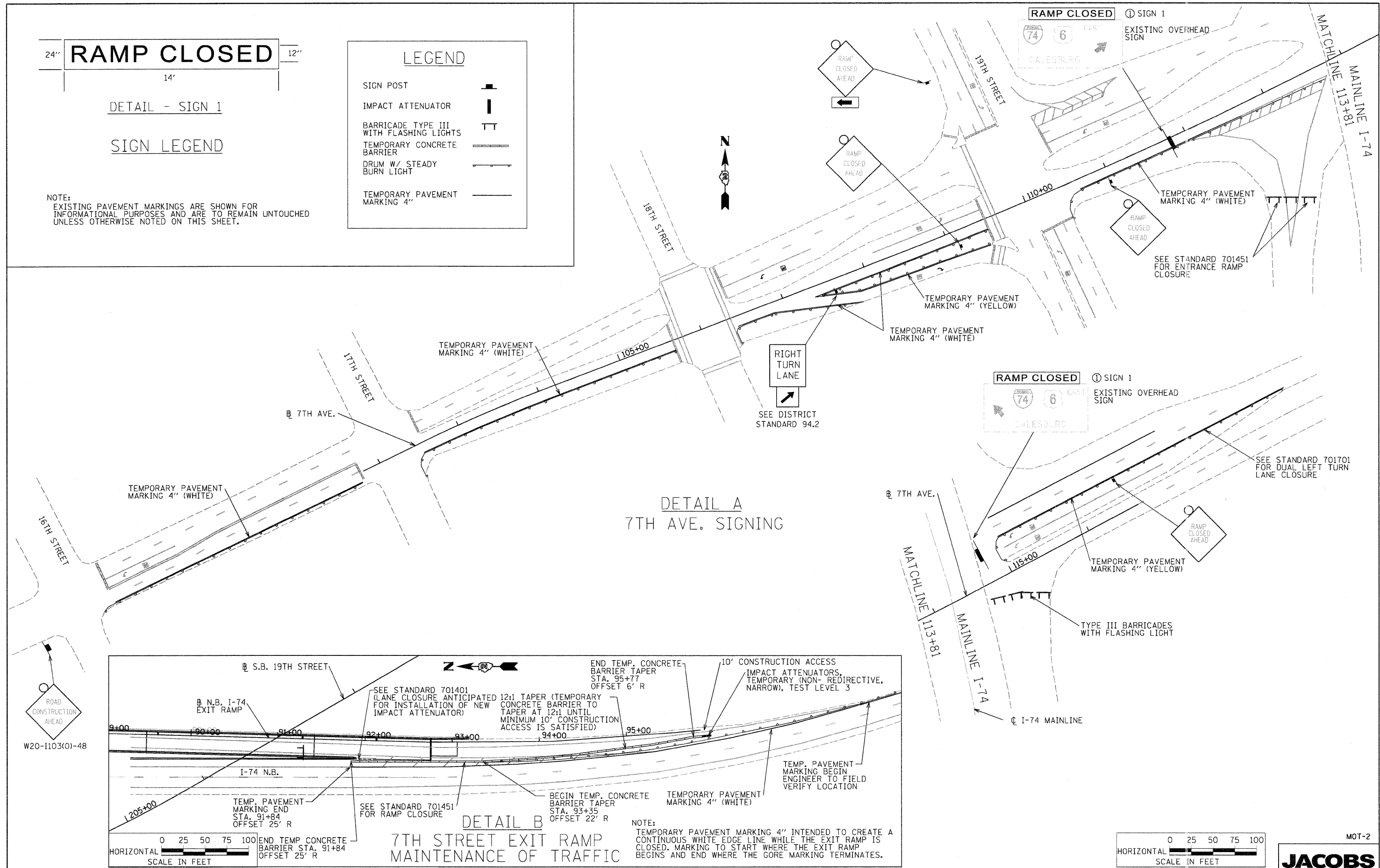
14"

DETAIL - SIGN 1

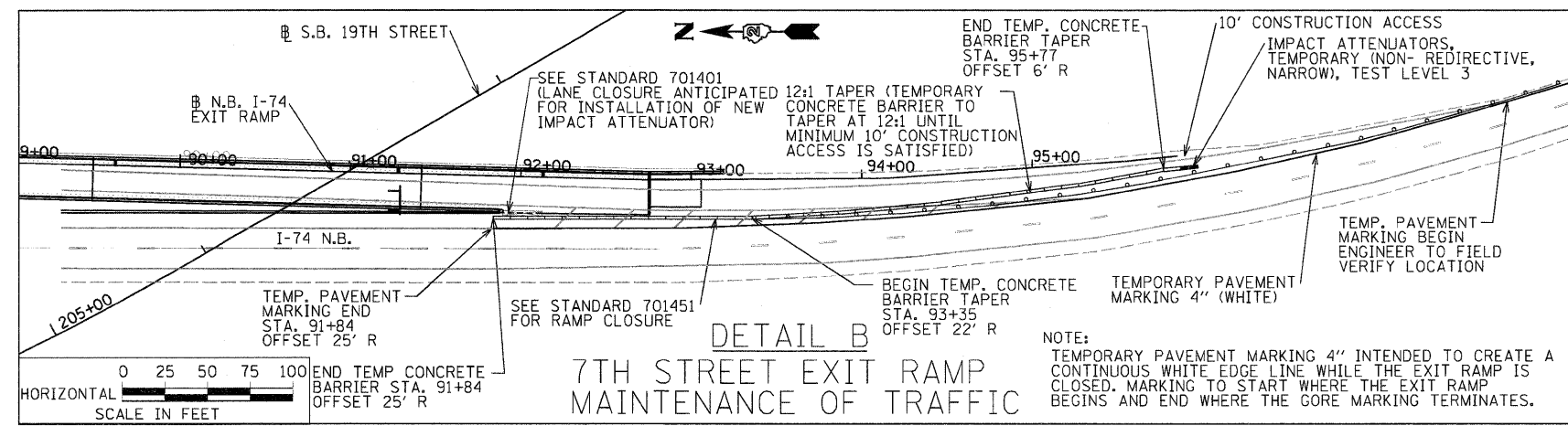
SIGN LEGEND

NOTE:
EXISTING PAVEMENT MARKINGS ARE SHOWN FOR INFORMATIONAL PURPOSES AND ARE TO REMAIN UNTOUCHED UNLESS OTHERWISE NOTED ON THIS SHEET.

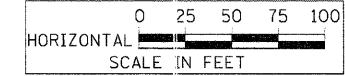
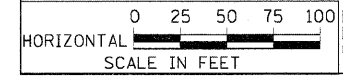
LEGEND	
SIGN POST	
IMPACT ATTENUATOR	
BARRICADE TYPE III WITH FLASHING LIGHTS	
TEMPORARY CONCRETE BARRIER	
DRUM W/ STEADY BURN LIGHT	
TEMPORARY PAVEMENT MARKING 4"	



DETAIL A
7TH AVE. SIGNING



DETAIL B
7TH STREET EXIT RAMP
MAINTENANCE OF TRAFFIC



FILE NAME = P:_2024\C9X94100\Cad\Task1\Cv\1\Sheet	USER NAME = agensch	DESIGNED - AEG	REVISED -
Files\MOT02.dgn		DRAWN - AEG	REVISED -
PLOT SCALE = #IMS.PLT.SCALE)		CHECKED - TAI	REVISED -
PLOT DATE = 11/9/2010		DATE - 10/29/10	REVISED -

STATE OF ILLINOIS
DEPARTMENT OF TRANSPORTATION

MAINTENANCE OF TRAFFIC -
SIGNING LEGEND AND MAINTENANCE OF TRAFFIC PLAN

F.A.I. RTE. 74	SECTION (81-1HB)D	COUNTY ROCK ISLAND	TOTAL SHEETS 78	SHEET NO. 12
FED. ROAD DIST. NO. ILLINOIS FED. AID PROJECT			CONTRACT NO. 64D95	

SCALE: SHEET NO. OF SHEETS STA. TO STA.

JACOBS

MOT-2