

EAST EDGE OF SHOULDER

Location	Station	Offset	Theoretical Grade Elevations
N. End S. Appr. Pav't.	90+86.24	-29.37	652.17*
A1	90+96.29	-29.31	652.67*
A2	91+06.35	-29.22	653.15*
S. End S. Appr. Pav't.	91+16.39	-29.13	653.63*

EAST EDGE OF PAVEMENT

Location	Station	Offset	Theoretical Grade Elevations
N. End S. Appr. Pav't.	90+86.21	-24.00	652.22
A1	90+96.25	-24.00	652.72
A2	91+06.30	-24.00	653.20
S. End S. Appr. Pav't.	91+16.34	-24.00	653.68

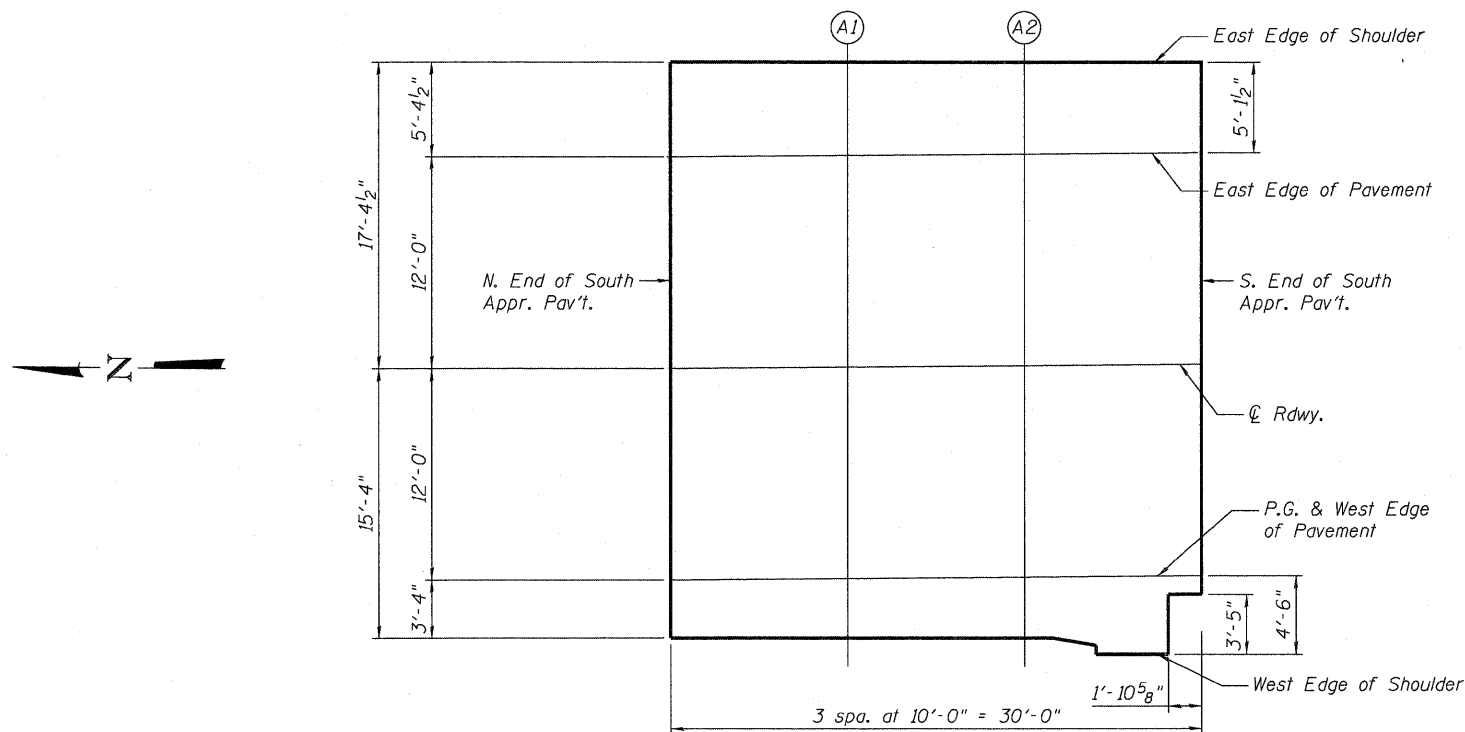
Q ROADWAY

Location	Station	Offset	Theoretical Grade Elevations
N. End S. Appr. Pav't.	90+86.15	-12.00	652.34
A1	90+96.17	-12.00	652.83
A2	91+06.19	-12.00	653.32
S. End S. Appr. Pav't.	91+16.21	-12.00	653.79

*NOTE - Match East Edge of Shoulder elevations to existing adjacent pavement elevations.

PROFILE GRADE & WEST EDGE OF PAVEMENT

Location	Station	Offset	Theoretical Grade Elevations
N. End S. Appr. Pav't.	90+86.08	0.00	652.15
A1	90+96.08	0.00	652.64
A2	91+06.08	0.00	653.12
S. End S. Appr. Pav't.	91+16.08	0.00	653.60



PLAN
South Approach

WEST EDGE OF SHOULDER

Location	Station	Offset	Theoretical Grade Elevations
N. End S. Appr. Pav't.	90+86.08	3.34	652.08
A1	90+96.05	3.40	652.57
A2	91+06.05	3.48	653.05
S. End S. Appr. Pav't.	91+16.07	1.08	653.57

E-AS

11-1-06

FILE NAME = 0810115-64095-SA07-TDAS.dgn
JACOBS

USER NAME = JACOBS
DESIGNED - LJH
CHECKED - KEB
DRAWN - LJH
PLOT DATE = 10/28/2010

REVISD -
REVISD -
REVISD -
REVISD -

STATE OF ILLINOIS
DEPARTMENT OF TRANSPORTATION

TOP OF SOUTH APPROACH SLAB ELEVATIONS
STRUCTURE NO. 081-0115

SHEET NO. SA7 OF SA28 SHEETS

F.A.I. RTE.	SECTION	COUNTY	TOTAL SHEETS	SHEET NO.
74	(81-1HB)D	ROCK ISLAND	78	25
CONTRACT NO. 64095				
ILLINOIS FED. AID PROJECT				