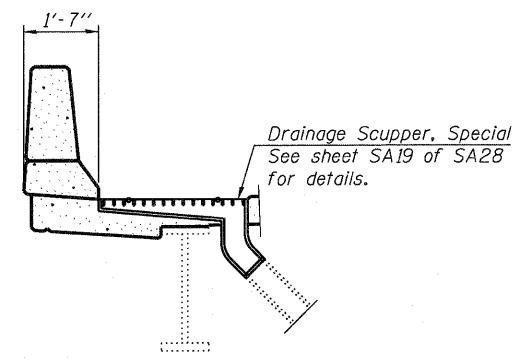


PLAN

*a₈(E) and b₁₂(E) bars typical all girders. See Fillet Reinforcement Section on Sheet SA15 of SA28.

MINIMUM BAR LAP

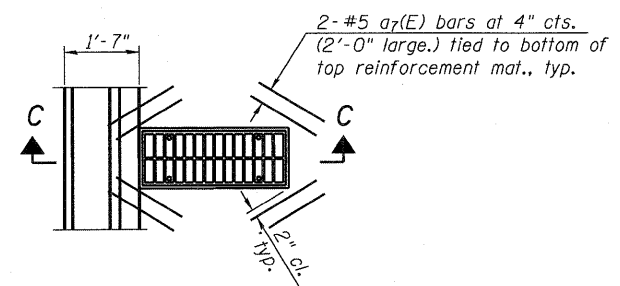
- (Deck)
 #4 bar = 2'-0"
 #5 bar = 3'-3"
 #6 bar = 3'-10"



SECTION C-C

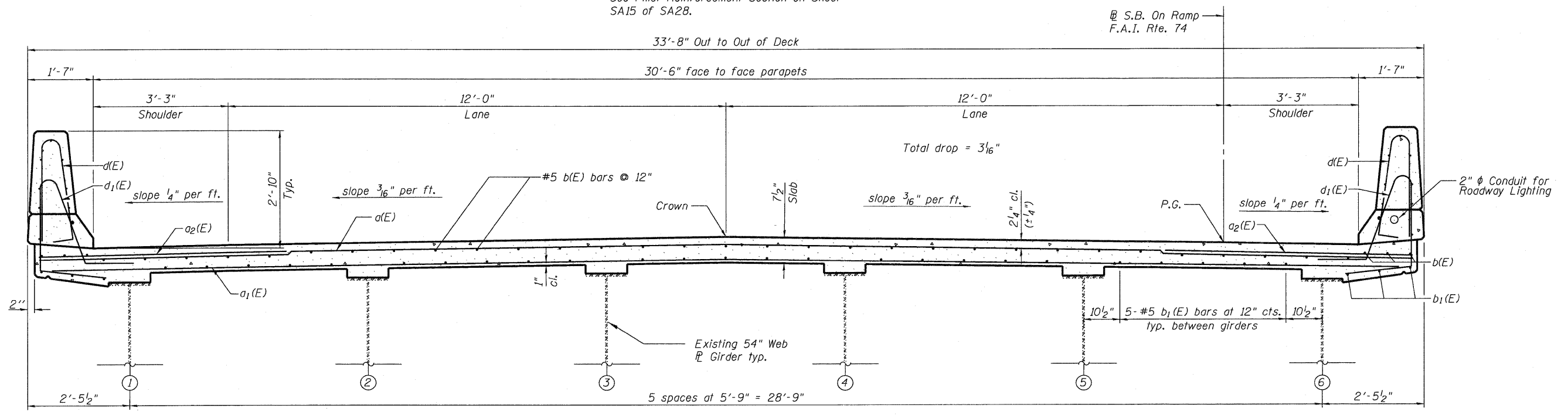
NOTES:

1. For Section A-A and B-B see Sheet No. SA14.
2. For parapet reinforcement details, see Sheet No. SA11.
3. Bars indicated thus 31x5-#5 etc. indicates 31 lines of bars with 5 lengths per line. See Sheet No. SA15 for superstructure details and Bill of Material.
4. Locate drainage scuppers to tie into existing closed drainage system.



DETAIL A

Note: Cut longitudinal reinforcement to clear drainage scuppers.



CROSS SECTION

(Looking South)

FILE NAME = 0810115-64D95-SA08-DECK1.dgn JACOBS	USER NAME = JACOBS	DESIGNED - KEB	REVISED -	STATE OF ILLINOIS DEPARTMENT OF TRANSPORTATION	DECK PLAN AND CROSS SECTION UNIT 1 STRUCTURE NO. 081-0115 SHEET NO. SAB OF SA28 SHEETS	F.A.I. RTE. 74	SECTION (81-1HB)D	COUNTY ROCK ISLAND	TOTAL SHEETS 78	SHEET NO. 26	
	PLOT SCALE =	DRAWN - KEB	REVISED -			CONTRACT NO. 64D95					
	PLOT DATE = 10/28/2010	CHECKED - L.J.H.	REVISED -			ILLINOIS FED. AID PROJECT					