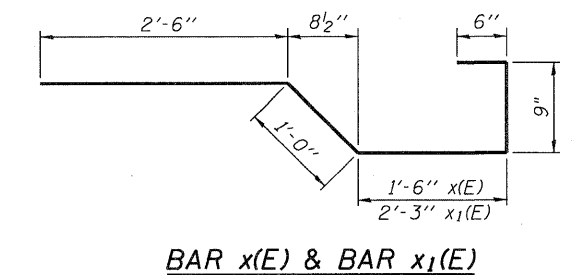
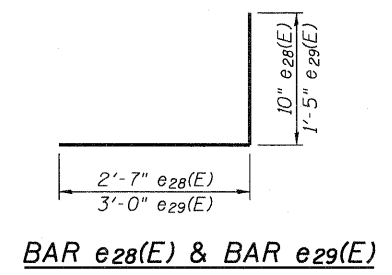
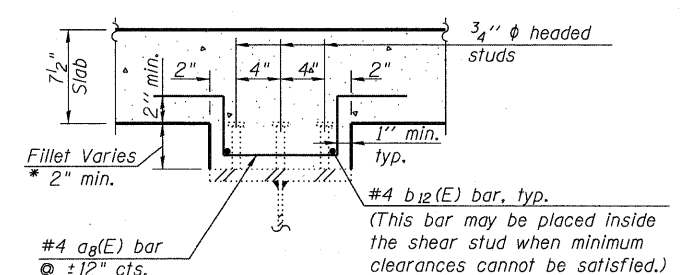
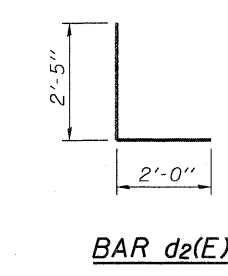
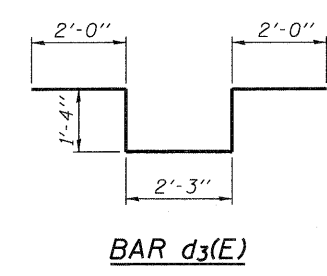
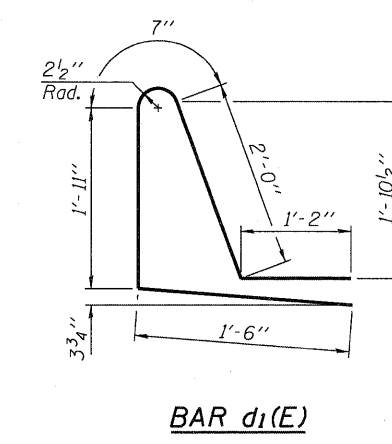
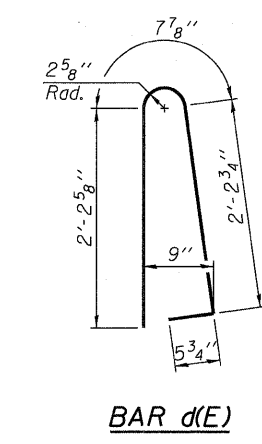
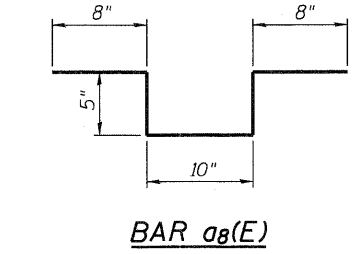
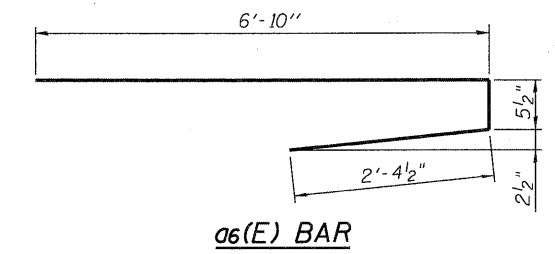
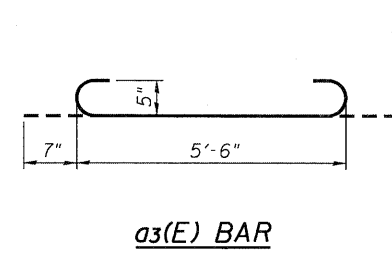


**SUPERSTRUCTURE
BILL OF MATERIAL**

Bar	No.	Size	Length	Shape
a(E)	1063	#5	33'-1"	—
a ₁ (E)	797	#5	32'-5"	—
a ₂ (E)	1036	#6	6'-6"	—
a ₃ (E)	90	#5	6'-8"	—
a ₄ (E)	25	#5	5'-6"	—
a ₅ (E)	1	#5	32'-11"	—
a ₆ (E)	59	#6	9'-8"	—
a ₇ (E)	80	#5	2'-0"	—
a ₈ (E)	2526	#4	3'-0"	—
b(E)	148	#5	26'-0"	—
b ₁ (E)	155	#5	21'-5"	—
b ₂ (E)	444	#5	29'-0"	—
b ₃ (E)	403	#5	27'-0"	—
b ₄ (E)	68	#6	31'-9"	—
b ₅ (E)	68	#6	33'-8"	—
b ₆ (E)	68	#6	30'-2"	—
b ₇ (E)	370	#5	28'-6"	—
b ₈ (E)	341	#5	26'-3"	—
b ₉ (E)	68	#6	26'-2"	—
b ₁₀ (E)	68	#6	26'-2"	—
b ₁₁ (E)	2	#6	35'-6"	—
b ₁₂ (E)	228	#4	26'-3"	—
d(E)	1415	#5	5'-7"	—
d ₁ (E)	1415	#5	7'-2"	—
d ₂ (E)	6	#6	4'-5"	—
d ₃ (E)	10	#6	8'-11"	—
e(E)	70	#4	18'-6"	—
e ₁ (E)	8	#4	25'-0"	—
e ₂ (E)	6	#8	34'-10"	—
e ₃ (E)	16	#4	8'-9"	—
e ₄ (E)	32	#4	17'-6"	—
e ₅ (E)	70	#4	18'-8"	—
e ₆ (E)	32	#4	18'-2"	—
e ₇ (E)	70	#4	18'-4"	—
e ₈ (E)	32	#4	14'-5"	—
e ₉ (E)	16	#4	11'-10"	—
e ₁₀ (E)	16	#4	25'-3"	—
e ₁₁ (E)	2	#8	8'-9"	—
e ₁₂ (E)	4	#8	17'-6"	—
e ₁₃ (E)	12	#8	35'-1"	—
e ₁₄ (E)	4	#8	18'-2"	—
e ₁₅ (E)	4	#8	14'-5"	—
e ₁₆ (E)	2	#8	11'-10"	—
e ₁₇ (E)	56	#4	16'-4"	—
e ₁₈ (E)	32	#4	13'-1"	—
e ₁₉ (E)	35	#4	16'-11"	—
e ₂₀ (E)	32	#4	11'-9"	—
e ₂₁ (E)	7	#4	15'-3"	—
e ₂₂ (E)	15	#4	24'-7"	—
e ₂₃ (E)	1	#4	32'-4"	—
e ₂₄ (E)	15	#8	26'-8"	—
e ₂₅ (E)	4	#8	13'-1"	—
e ₂₆ (E)	4	#8	11'-9"	—
e ₂₇ (E)	1	#8	33'-6"	—
e ₂₈ (E)	5	#4	3'-5"	—
e ₂₉ (E)	4	#4	4'-5"	—
e ₃₀ (E)	56	#4	17'-3"	—
x(E)	120	#5	6'-2"	—
x ₁ (E)	60	#5	6'-9"	—
Reinforcement Bars, Epoxy Coated	Pound	183,200		
Concrete Superstructure	Cu. Yd.	725.9		



*Install a₈(E) and b₁₂(E) bars where fillet height exceeds 2".

FILLET REINFORCEMENT SECTION