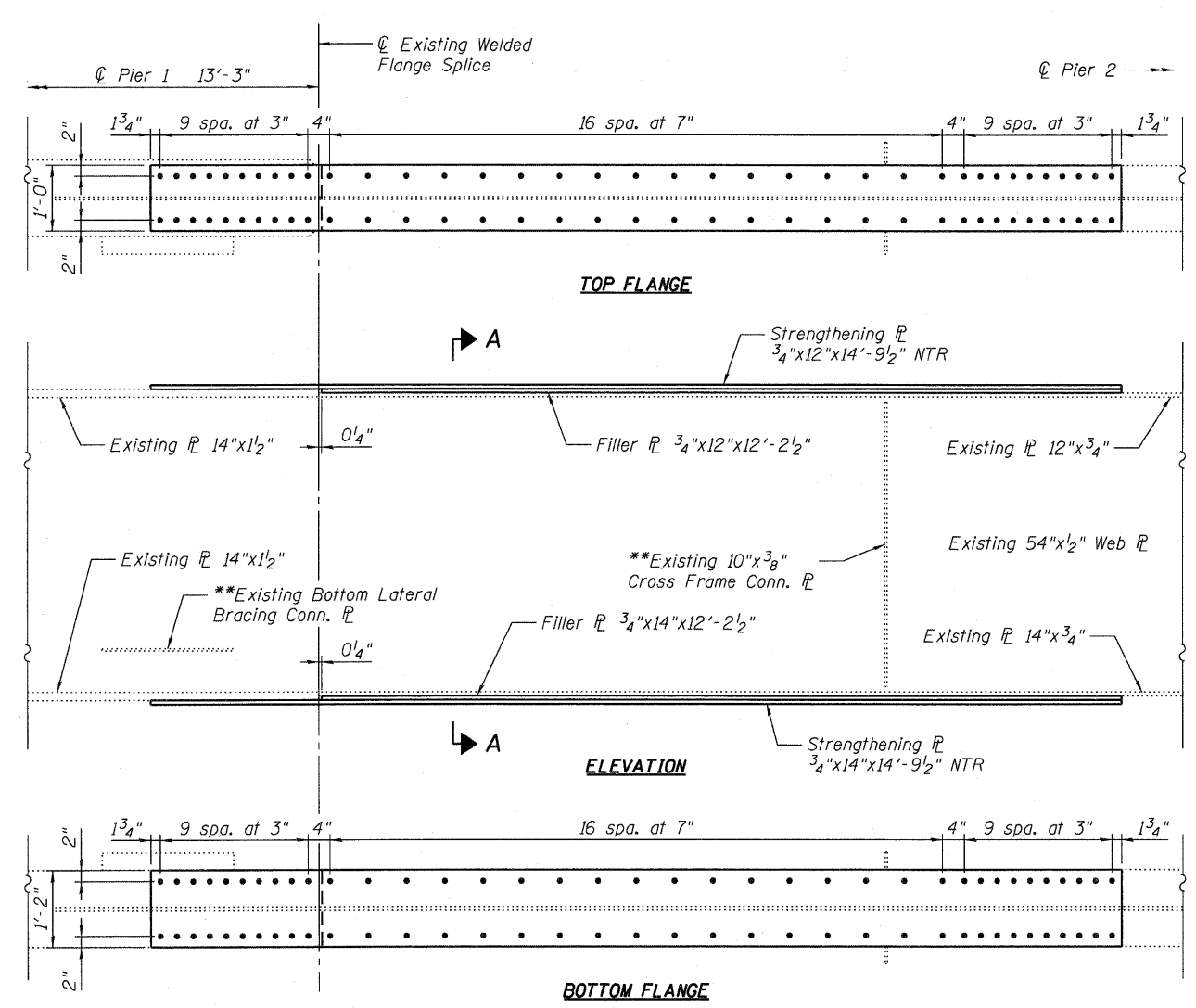
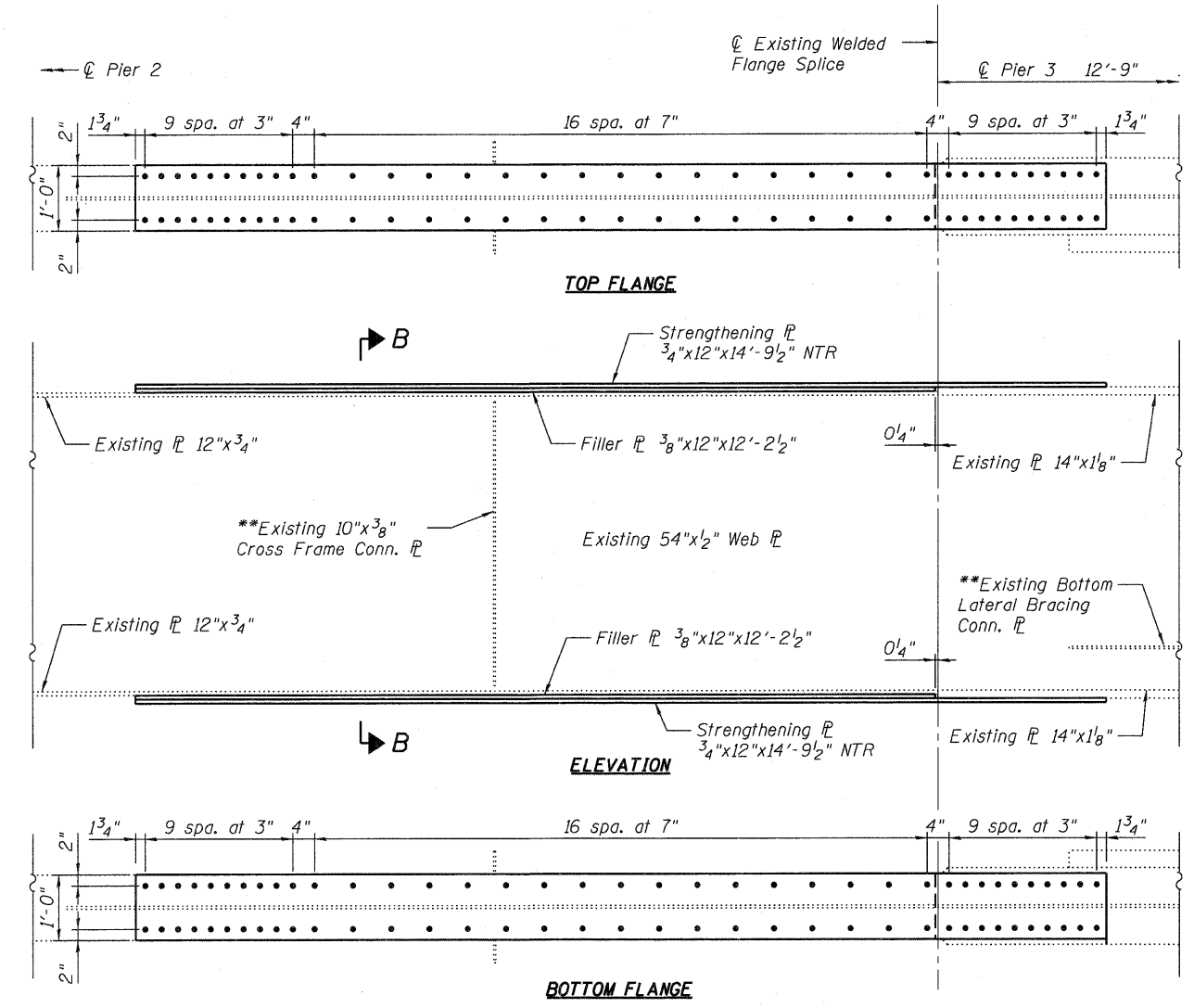


PLAN



STRENGTHENING PLATE DETAIL #1
(Girder 5 shown, Girders 1-4 & 6 similar)



STRENGTHENING PLATE DETAIL #2
(Girder 5 shown, Girders 1-4 & 6 similar)

* Use holes in new plate as template to field drill holes in flange plates.
 ** Temporarily remove existing cross frame and bottom lateral bracing as required to install plates.

NOTE:
 For Section A-A, Section B-B, Notes and Bill of Material, see Sheet SA21 of SA28.

| | | | | | | | | | | |
|---|------------------------|----------------|-----------|---|--|---------------------------|---------------------|----------------------|-------------------|----------------|
| FILE NAME = 0810115-64D95-SA20-STEEL.dgn JACOBS | USER NAME = JACOBS | DESIGNED - MBO | REVISED - | STATE OF ILLINOIS DEPARTMENT OF TRANSPORTATION | STRUCTURAL STEEL REPAIR DETAILS I STRUCTURE NO. 081-0115 SHEET NO. SA20 OF SA28 SHEETS | F.A.I. RTE. = 74 | SECTION = (81-1HB)D | COUNTY = ROCK ISLAND | TOTAL SHEETS = 78 | SHEET NO. = 38 |
| | PLOT SCALE = | CHECKED - KEB | REVISED - | | | CONTRACT NO. 64D95 | | | | |
| | PLOT DATE = 10/28/2010 | DRAWN - KEB | REVISED - | | | ILLINOIS FED. AID PROJECT | | | | |
| | | CHECKED - MBO | REVISED - | | | | | | | |