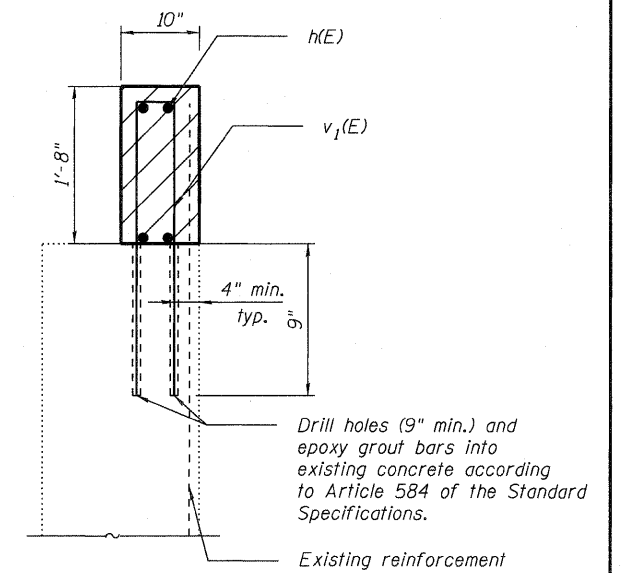
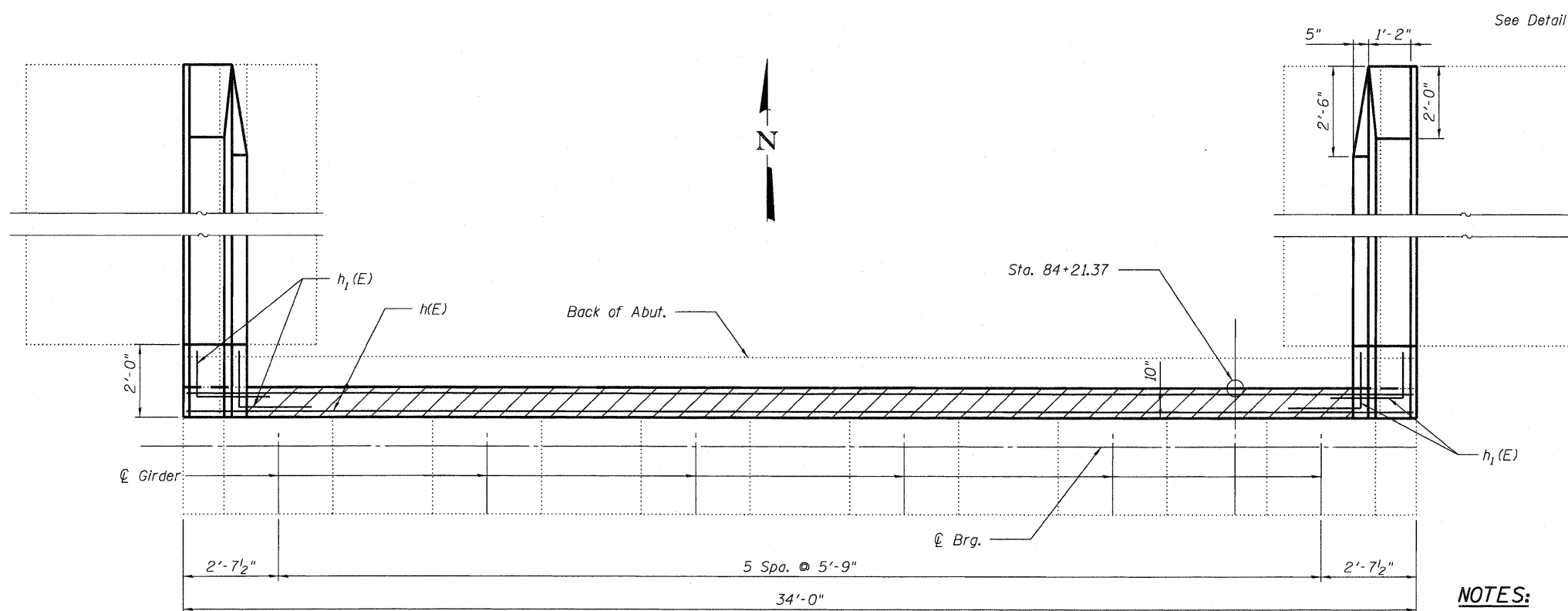


ELEVATION

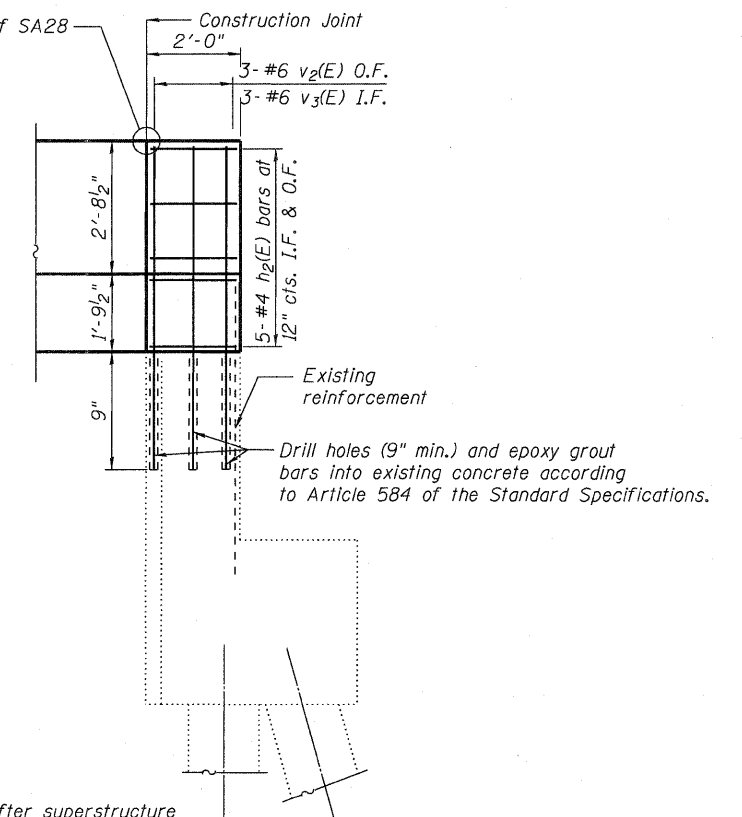


SECTION THRU BACKWALL



TOP VIEW

See Detail E, Sht. SA27 of SA28



VIEW A-A

NOTES:

1. Hatched area to be poured after superstructure false work has been removed. Quantity of concrete included in Concrete Superstructure.
2. Existing reinforcement shall be cleaned and incorporated into the new construction. Cost included with Concrete Removal.

FILE NAME = 0810115-64D95-SA24-NABUT1.dgn

JACOBS

USER NAME = JACOBS

DESIGNED - LM

CHECKED - L JH

REVIS

PLT SCALE =

PLT DATE = 10/28/2010

DESIGNED - LM

CHECKED - L JH

REVIS

PLT SCALE =

PLT DATE = 10/28/2010

DESIGNED - LM

CHECKED - L JH

REVIS

PLT SCALE =

PLT DATE = 10/28/2010

**STATE OF ILLINOIS
DEPARTMENT OF TRANSPORTATION**

**NORTH ABUTMENT DETAILS I
STRUCTURE NO. SN 081-1115**

SHEET NO. SA24 OF SA28 SHEETS

F.A.I. RTE.	SECTION	COUNTY	TOTAL SHEETS	SHEET NO.
74	(81-1HB)D	ROCK ISLAND	78	42
			CONTRACT NO. 64D95	
ILLINOIS FED. AID PROJECT				