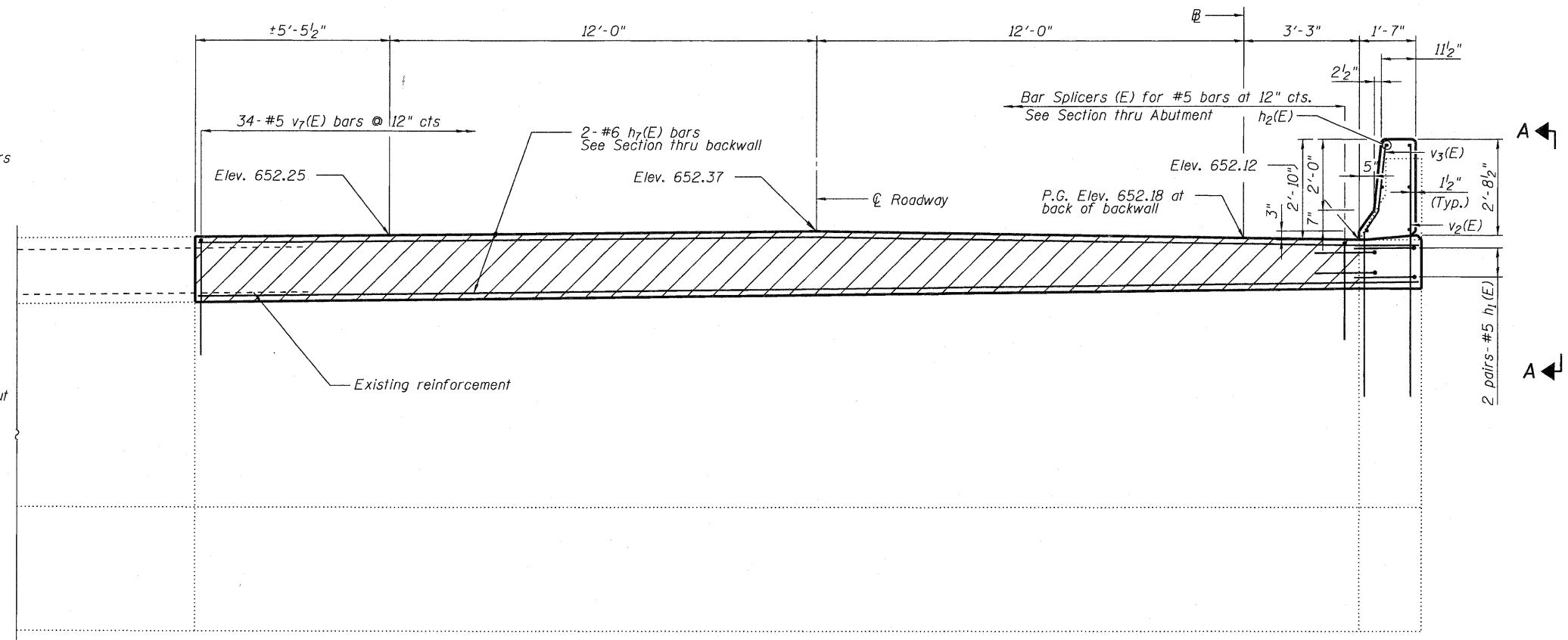
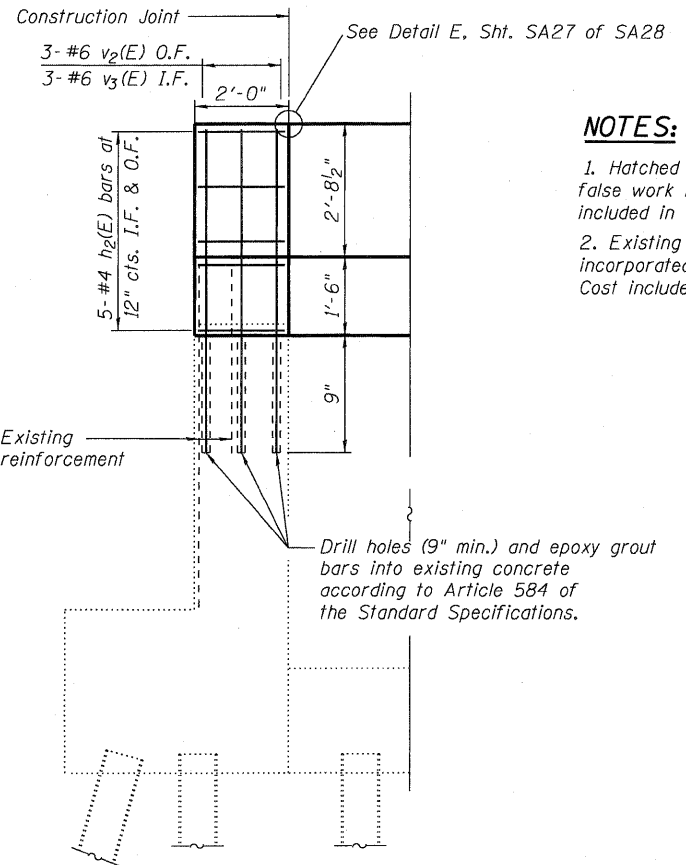


**SECTION THRU BACKWALL**



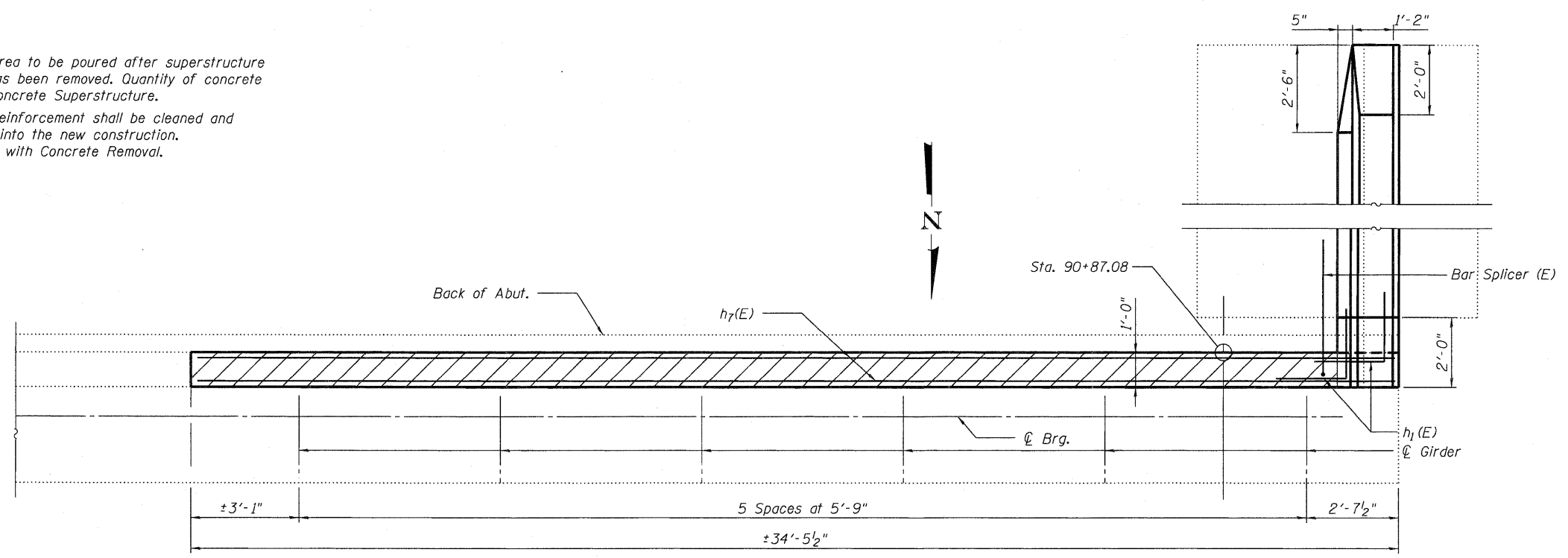
**ELEVATION**



**VIEW A-A**

**NOTES:**

1. Hatched area to be poured after superstructure false work has been removed. Quantity of concrete included in Concrete Superstructure.
2. Existing reinforcement shall be cleaned and incorporated into the new construction. Cost included with Concrete Removal.



**PLAN**



FILE NAME = 0810115-64D95-SA26-SABUT1.dgn	USER NAME = JACOBS	DESIGNED - LM	REVISED -
		CHECKED - LJH	REVISED -
		DRAWN - LM	REVISED -
		CHECKED - LJH	REVISED -
PLOT SCALE =			
PLOT DATE = 10/28/2010			

STATE OF ILLINOIS  
DEPARTMENT OF TRANSPORTATION

SOUTH ABUTMENT DETAILS I  
STRUCTURE NO. SN 081-1115

SHEET NO. SA26 OF SA28 SHEETS

F.A.I. RTE. 74	SECTION (81-1HBID)	COUNTY ROCK ISLAND	TOTAL SHEETS 78	SHEET NO. 44
CONTRACT NO. 64D95				ILLINOIS FED. AID PROJECT