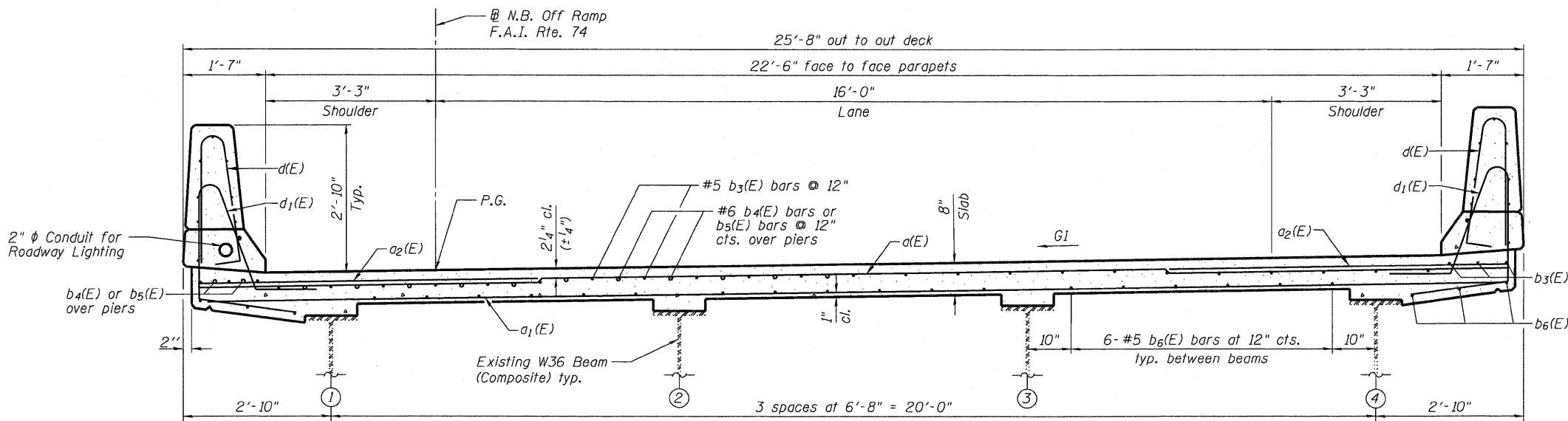


PLAN

\*a<sub>8</sub>(E) and b<sub>13</sub>(E) bars typical all girders. See Fillet Reinforcement Section on Sheet SB14 of SB30.



CROSS SECTION (Looking South)

**MINIMUM BAR LAP**  
(Deck)  
#4 bar = 2'-0"  
#5 bar = 3'-3"  
#6 bar = 3'-10"

- NOTES:**
- For Section A-A and B-B see Sheet No. SB14.
  - For parapet reinforcement details, see Sheet No. SB12.
  - Bars indicated thus 23x7-#5 etc. indicates 23 lines of bars with 7 lengths per line.
  - See Sheet No. SB14 for superstructure details and Bill of Material.
  - See Sheet No. SB10 for deck cross slope values.
  - Locate drainage scuppers to tie into existing closed drainage system.

FILE NAME = 0810116-64D95-SB09-DECK2.dgn  
**JACOBS**

USER NAME = JACOBS	DESIGNED - SJB	REVISED -
PLOT SCALE =	CHECKED - LJH	REVISED -
PLOT DATE = 10/28/2010	DRAWN - SJB	REVISED -
	CHECKED - LJH	REVISED -

STATE OF ILLINOIS  
DEPARTMENT OF TRANSPORTATION

DECK PLAN AND CROSS SECTION UNIT 2  
STRUCTURE NO. 081-0116  
SHEET NO. SB9 OF SB30 SHEETS

F.A.I. RTE.	SECTION	COUNTY	TOTAL SHEETS	SHEET NO.
74	(81-1H)D	ROCK ISLAND	78	55
CONTRACT NO. 64D95				
ILLINOIS FED. AID PROJECT				