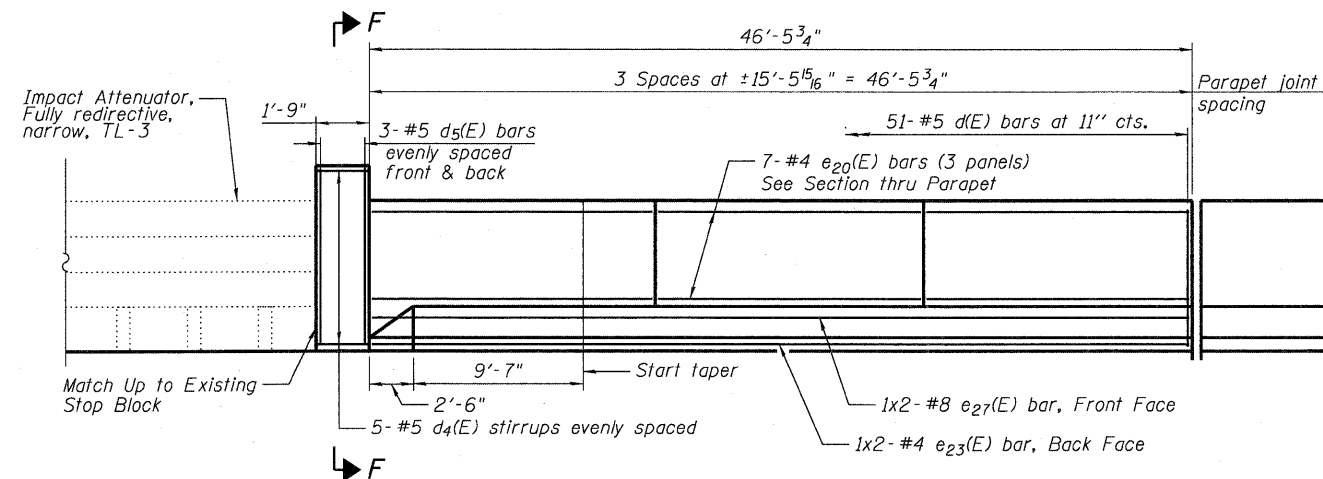
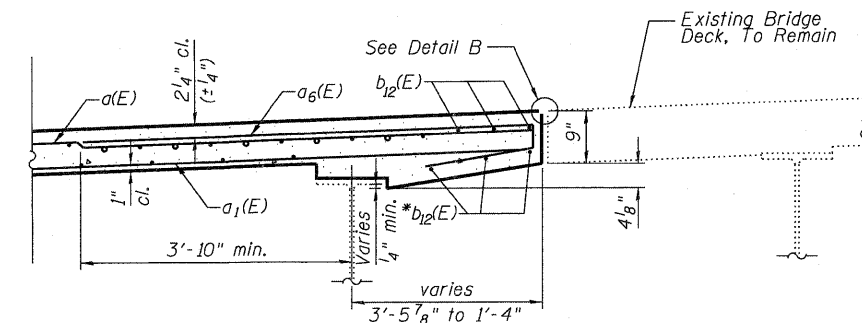


INSIDE ELEVATION OF EAST PARAPET UNIT 3



INSIDE ELEVATION OF WEST PARAPET UNIT 3



\*b<sub>12</sub>(E) bars placed parallel to joint

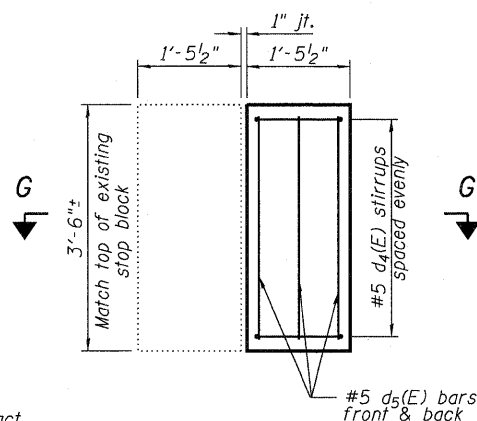
SECTION D-D

**MINIMUM BAR LAP**

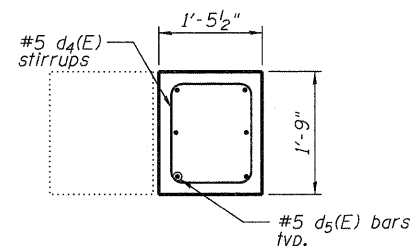
(Parapet)  
 #4 bar = 2'-0"  
 #8 bar = 5'-2"

**NOTES:**

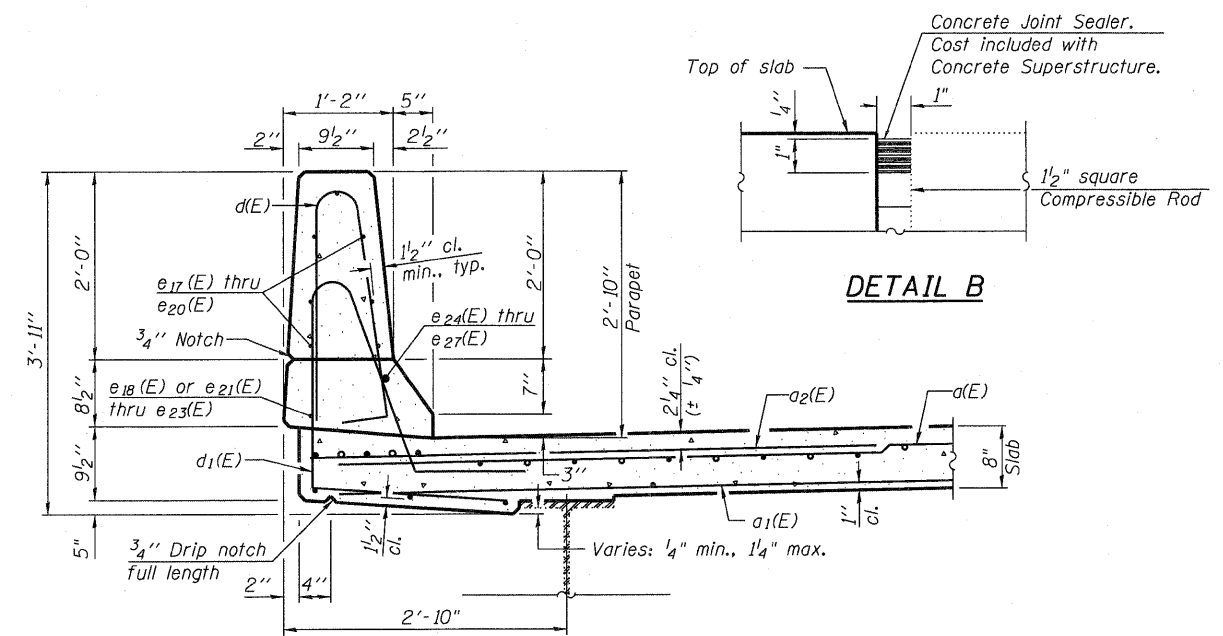
1. For Parapet joint detail, see Sheet No. SB11.
2. Bars indicated thus 1x2-#4 etc. indicates 1 line of bars with 2 lengths per line.
3. See Sheet No. SB14 for superstructure details and Bill of Material.
4. Modify Stop Block and Parapet as required for impact attenuator system selected per manufacturer's recommendations and as approved by the Engineer.



SECTION F-F



SECTION G-G



SECTION THRU PARAPET

DETAIL B

FILE NAME =  
 0810116-64D95-SB13-PARAP3.dgn

**JACOBS**

USER NAME = JACOBS

PLOT SCALE =  
 PLOT DATE = 10/26/2010

DESIGNED - KEB

CHECKED - LJH

REVIS

REVIS

REVIS

REVIS

REVIS

REVIS

STATE OF ILLINOIS  
 DEPARTMENT OF TRANSPORTATION

SUPERSTRUCTURE DETAILS UNIT 3  
 STRUCTURE NO. 081-0116

SHEET NO. SB13 OF SB30 SHEETS

F.A.I.  
 RTE.

74

SECTION

(81-IHB)D

COUNTY

ROCK ISLAND

TOTAL  
 SHEETS

78

SHEET  
 NO.

59

CONTRACT NO. 64D95

ILLINOIS FED. AID PROJECT