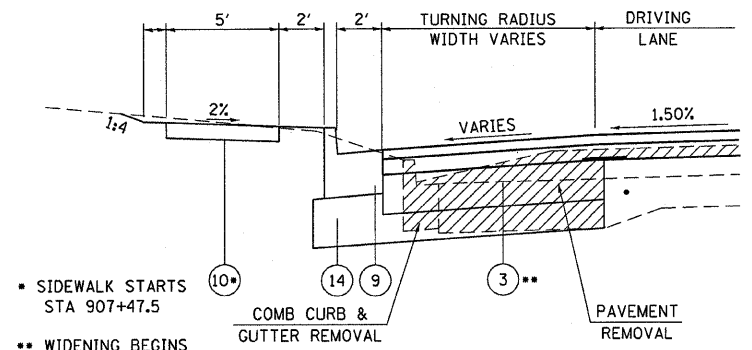
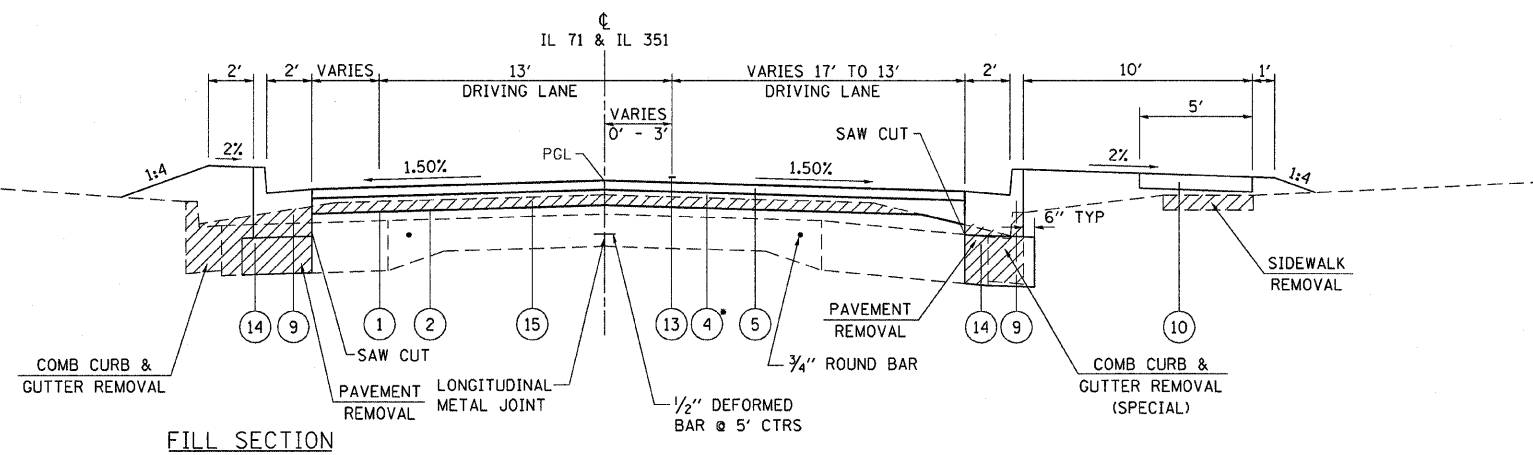


F.A.P. RTE.	SECTION	COUNTY	TOTAL SHEETS	SHEET NO.
619	TO RS-5 & I	LASALLE	214	15
STA.		TO STA.		
FED. ROAD DIST. NO. 3		ILLINOIS FED. AID PROJECT		



• SIDEWALK STARTS STA 907+47.5  
•• WIDENING BEGINS STA 906+94.93

CUT SECTION



FILL SECTION

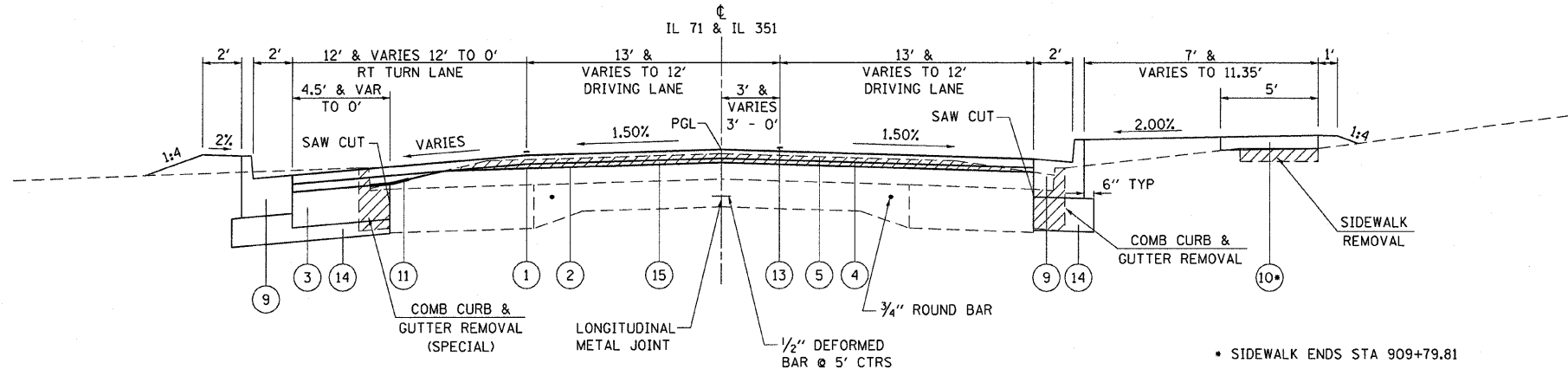
IL 71 & IL 351  
TYPICAL SECTION  
STA 906+16.43 TO STA 908+59.25

- PROPOSED LEGEND
- ① PROPOSED BITUMINOUS MATERIALS (PRIME COAT)
  - ② PROPOSED AGGREGATE PRIME COAT
  - ③ PROPOSED PPC BASE COURSE, 10 1/2"
  - ④ PROPOSED LEVELING BINDER (MACHINE METHOD) N70, 3/4"
  - ⑤ PROPOSED HOT-MIX ASPHALT SURFACE COURSE, MIX "D", N70, 1 1/2"
  - ⑥ PROPOSED HOT-MIX ASPHALT SHOULDERS, 5 3/4"
  - ⑦ PROPOSED HOT-MIX ASPHALT SHOULDERS, 2 1/4" & VAR.
  - ⑧ PROPOSED AGGREGATE SHOULDERS, TYPE B
  - ⑨ PROPOSED COMBINATION CONCRETE CURB AND GUTTER, TYPE B-6.24
  - ⑩ PROPOSED PORTLAND CEMENT CONCRETE SIDEWALK, 4"
  - ⑪ PROPOSED STRIP REFLECTIVE CRACK CONTROL TREATMENT
  - ⑫ PROPOSED CONCRETE CURB, TYPE B
  - ⑬ PROPOSED PAVEMENT MARKING
  - ⑭ PROPOSED SUB-BASE GRANULAR MATERIAL, TYPE A, 4" & VARIES
  - ⑮ HOT-MIX ASPHALT SURFACE REMOVAL, 1 1/2" & VAR

REMOVAL ITEMS

• THE THICKNESS OF POLYMERIZED LEVELING BINDER (MACHINE METHOD) VARIES AS FOLLOWS.

IL -71/351	STA 900+13.42 TO STA 908+59.25			
17' LT	13' LT	CL	13' RT	17' RT
2" TO 10 1/2"	1" TO 7 1/2"	3/4" TO 4 3/4"	1" TO 7 1/2"	2" TO 10 1/2"



• SIDEWALK ENDS STA 909+79.81

IL 71 & IL 351  
TYPICAL SECTION  
STA 908+59.25 TO STA 911+47.62

REVISIONS	
NAME	DATE

ILLINOIS DEPARTMENT OF TRANSPORTATION  
PROPOSED TYPICAL SECTIONS  
FAP 619 (IL ROUTE 71/351)  
SECTION 70 RS-5 & I  
LASALLE COUNTY  
DRAWN BY RCB  
CHECKED BY JWS  
DATE 6/03