

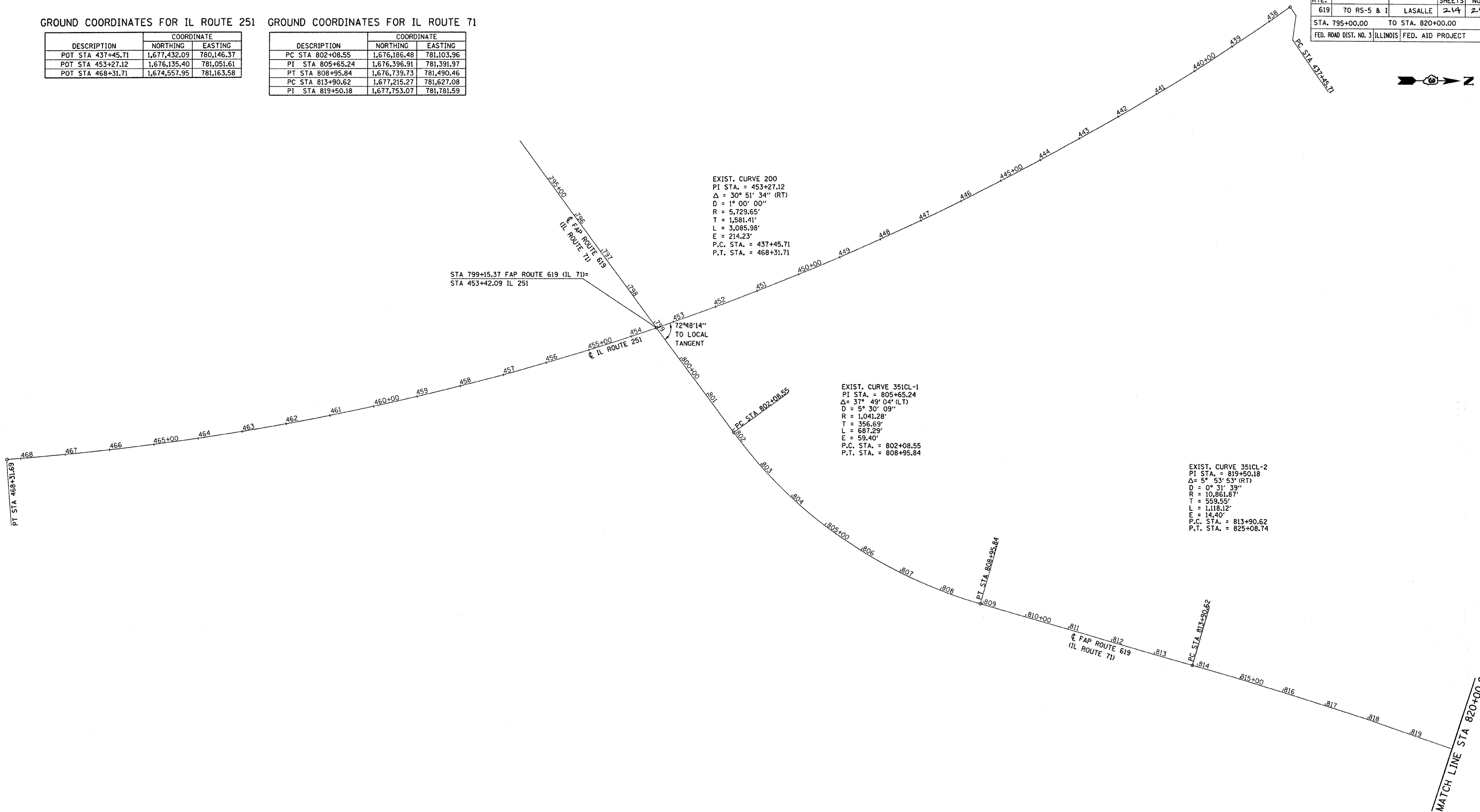
F.A.P. RTE.	SECTION	COUNTY	TOTAL SHEETS	SHEET NO.
619	70 RS-5 & 1	LASALLE	24	25
STA. 795+00.00 TO STA. 820+00.00				
FED. ROAD DIST. NO. 3 ILLINOIS			FED. AID PROJECT	

GROUND COORDINATES FOR IL ROUTE 251

DESCRIPTION	COORDINATE	
	NORTHING	EASTING
POT STA 437+45.71	1,677,432.09	780,146.37
POT STA 453+27.12	1,676,135.40	781,051.61
POT STA 468+31.71	1,674,557.95	781,163.58

GROUND COORDINATES FOR IL ROUTE 71

DESCRIPTION	COORDINATE	
	NORTHING	EASTING
PC STA 802+08.55	1,676,186.48	781,103.96
PI STA 805+65.24	1,676,396.91	781,391.97
PT STA 808+95.84	1,676,739.73	781,490.46
PC STA 813+90.62	1,677,215.27	781,627.08
PI STA 819+50.18	1,677,753.07	781,781.59



REVISIONS	
NAME	DATE

ILLINOIS DEPARTMENT OF TRANSPORTATION

HORIZONTAL CONTROL AND ALIGNMENT TIES

FAP ROUTE 619 (IL ROUTE 71 / 351)
SECTION NO. 70 RS-5 & 1
LASALLE COUNTY

SCALE: VERT. _____
HORIZ. _____
DATE _____

DRAWN BY BANDY
CHECKED BY STEUART

