

F.A.P. RTE.	SECTION	COUNTY	TOTAL SHEETS	SHEET NO.
619	70 RS-5 & I	LASALLE	2-14	2-7
STA. 884+00.00		TO STA. 915+15.12		
FED. ROAD DIST. NO. 3 ILLINOIS FED. AID PROJECT				

GROUND COORDINATES FOR IL ROUTE 71

DESCRIPTION	COORDINATE	
	NORTHING	EASTING
POT STA 899+08.80	1,685,622.68	782,336.64
POT STA 908+60.71	1,686,574.58	782,341.48
POT STA 916+45.93	1,687,359.77	782,347.96

GROUND COORDINATES FOR SECOND STREET

DESCRIPTION	COORDINATE	
	NORTHING	EASTING
POT STA 2+00.00	1,685,764.39	782,337.36
POT STA 3+47.19	1,685,764.38	782,484.55

GROUND COORDINATES FOR WALNUT STREET (WEST)

DESCRIPTION	COORDINATE	
	NORTHING	EASTING
POT STA 4+12.00	1,686,582.53	781,753.55
POT STA 5+62.00	1,686,580.02	781,903.53
POT STA 8+00.37	1,686,576.04	781,141.87
POT STA 10+00.00	1,686,572.70	782,341.47

GROUND COORDINATES FOR FLORENCE

DESCRIPTION	COORDINATE	
	NORTHING	EASTING
POT STA 0+00.00	1,687,043.03	782,345.39
POT STA 1+61.13	1,687,043.10	782,506.48

GROUND COORDINATES FOR SURPENTINE TRAIL

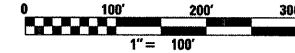
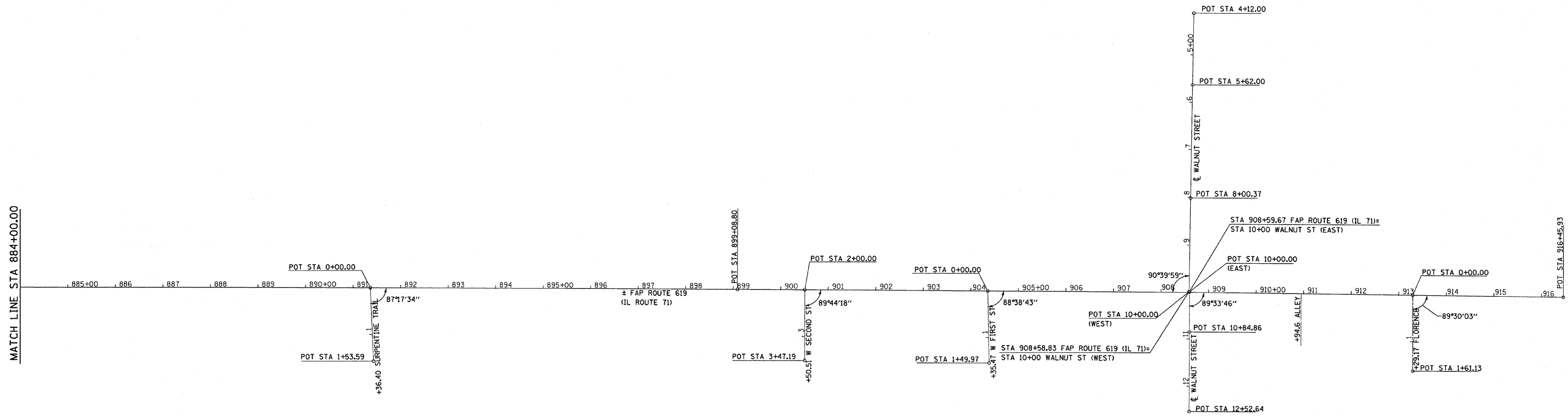
DESCRIPTION	COORDINATE	
	NORTHING	EASTING
POT STA 0+00.00	1,684,850.29	782,333.12
POT STA 1+53.59	1,684,856.91	782,486.57

GROUND COORDINATES FOR FIRST STREET

DESCRIPTION	COORDINATE	
	NORTHING	EASTING
POT STA 0+00.00	1,686,149.29	782,339.32
POT STA 1+49.97	1,686,152.19	782,489.26

GROUND COORDINATES FOR WALNUT STREET (EAST)

DESCRIPTION	COORDINATE	
	NORTHING	EASTING
POT STA 10+00.00	1,686,573.54	782,338.33
POT STA 10+84.86	1,686,573.49	782,426.34
POT STA 12+52.64	1,686,573.38	782,594.11



REVISIONS	
NAME	DATE

ILLINOIS DEPARTMENT OF TRANSPORTATION

HORIZONTAL CONTROL AND ALIGNMENT TIES

FAP ROUTE 619 (IL ROUTE 71 /351)
SECTION NO. 70 RS-5 & I
LASALLE COUNTY

SCALE: VERT. _____
HORIZ. _____

DATE _____ DRAWN BY BANDY
CHECKED BY STEUART