

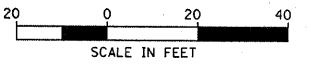
F.A.P. RTE.	SECTION	COUNTY	TOTAL SHEETS	SHEET NO.
619	70 RS-5 & I	LASALLE	214	31
STA. 806+00.00		TO STA. 811+50.00		
FED. ROAD DIST. NO. 3		ILLINOIS FED. AID PROJECT		

EXIST. CURVE 351CL-1
 PI STA. = 805+65.24
 $\Delta = 37^\circ 49' 04''$ (LT)
 $D = 5^\circ 30' 09''$
 $R = 1,041.28'$
 $T = 356.69'$
 $L = 687.29'$
 $E = 59.40'$
 P.C. STA. = 802+08.55
 P.T. STA. = 808+95.84

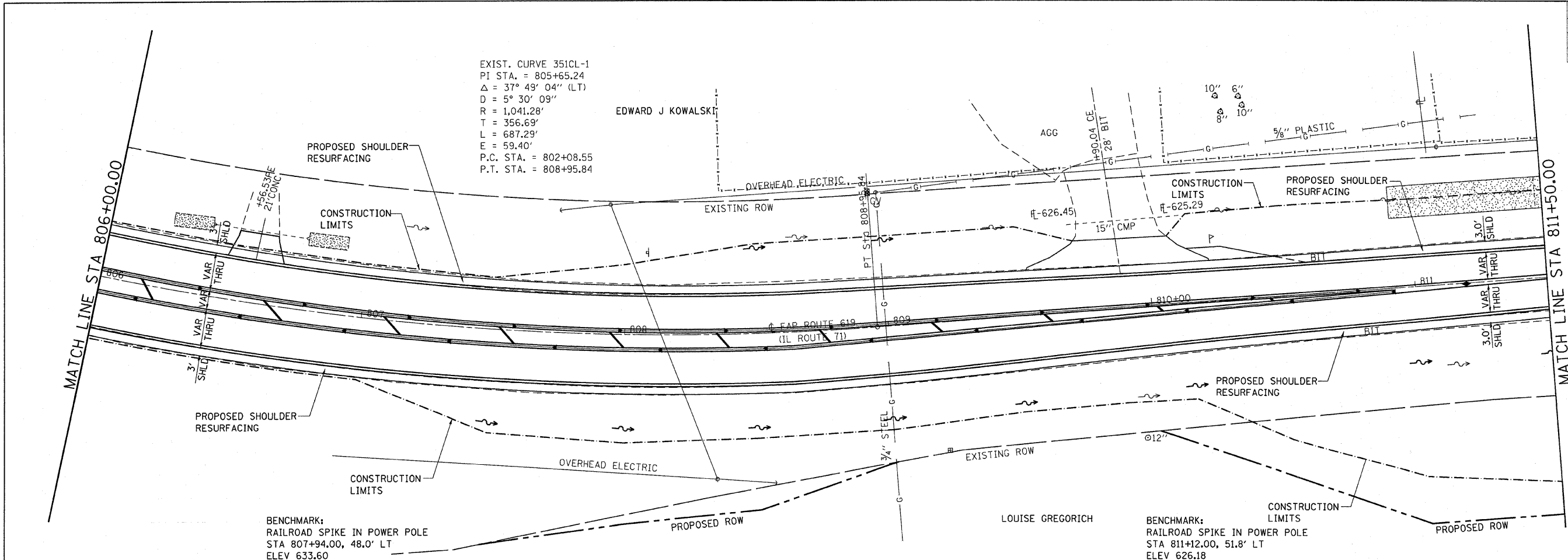
EDWARD J KOWALSKI



EX RIPRAP



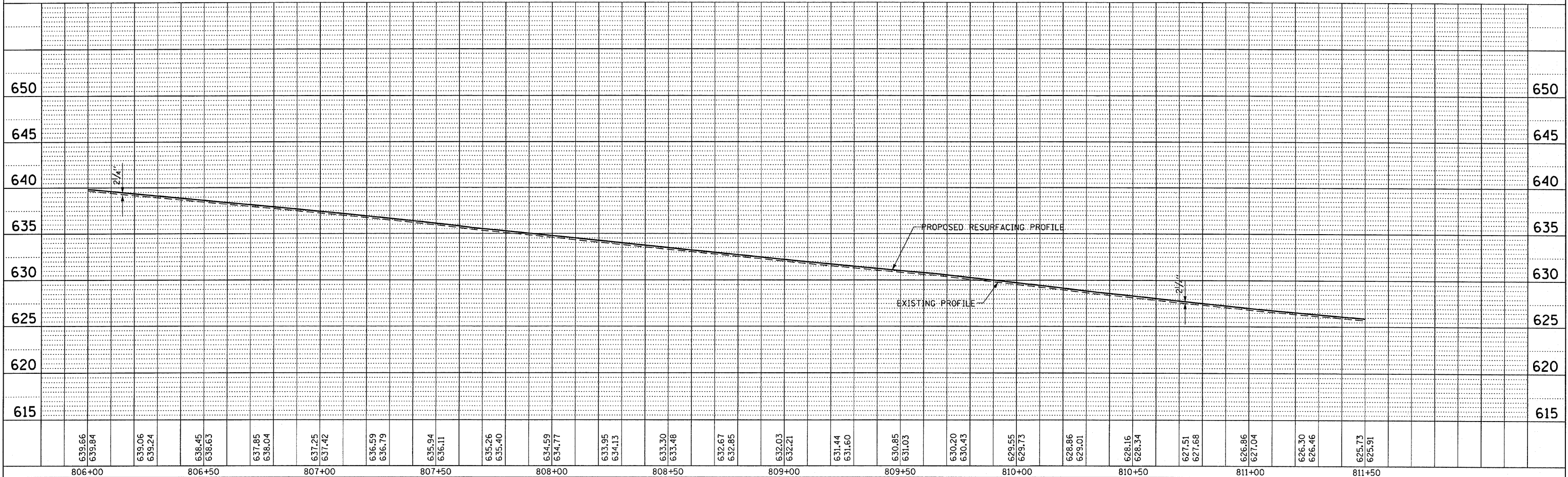
PLAN	REVIEWED	DATE
NO. _____	BY _____	DATE _____
NOTE BOOK _____	ALIGNED CHECKED _____	
NO. _____	PLOTTED _____	
	FIELD FILE NAME _____	



BENCHMARK:
 RAILROAD SPIKE IN POWER POLE
 STA 807+94.00, 48.0' LT
 ELEV 633.60

LOUISE GREGORICH
 BENCHMARK:
 RAILROAD SPIKE IN POWER POLE
 STA 811+12.00, 51.8' LT
 ELEV 626.18

PROFILE	REVIEWED	DATE
NO. _____	BY _____	DATE _____
NOTE BOOK _____	GRADES CHECKED _____	
NO. _____	PLOTTED _____	
	STRUCTURE NOTATIONS CHECKED _____	



PLAN & PROFILE, FAP ROUTE 619 (IL 71) STA. 806+00.00 TO STA. 811+50.00