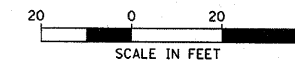
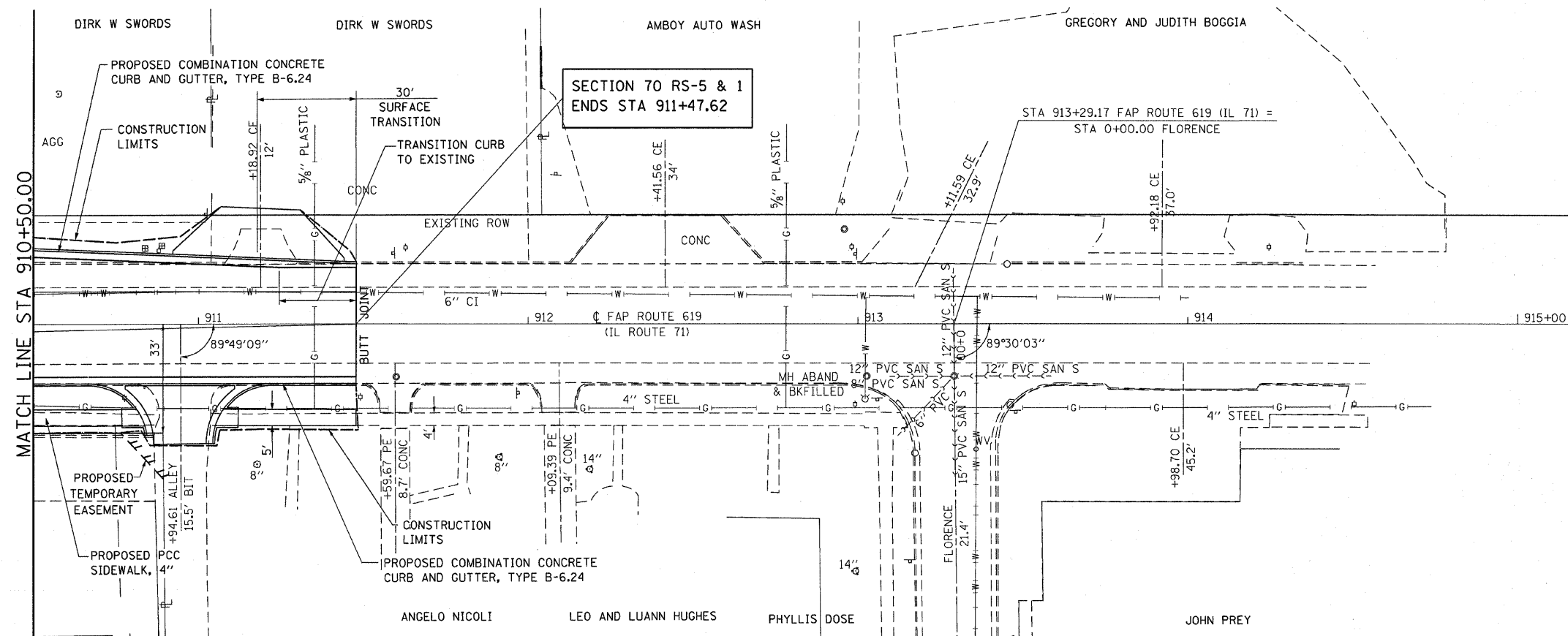


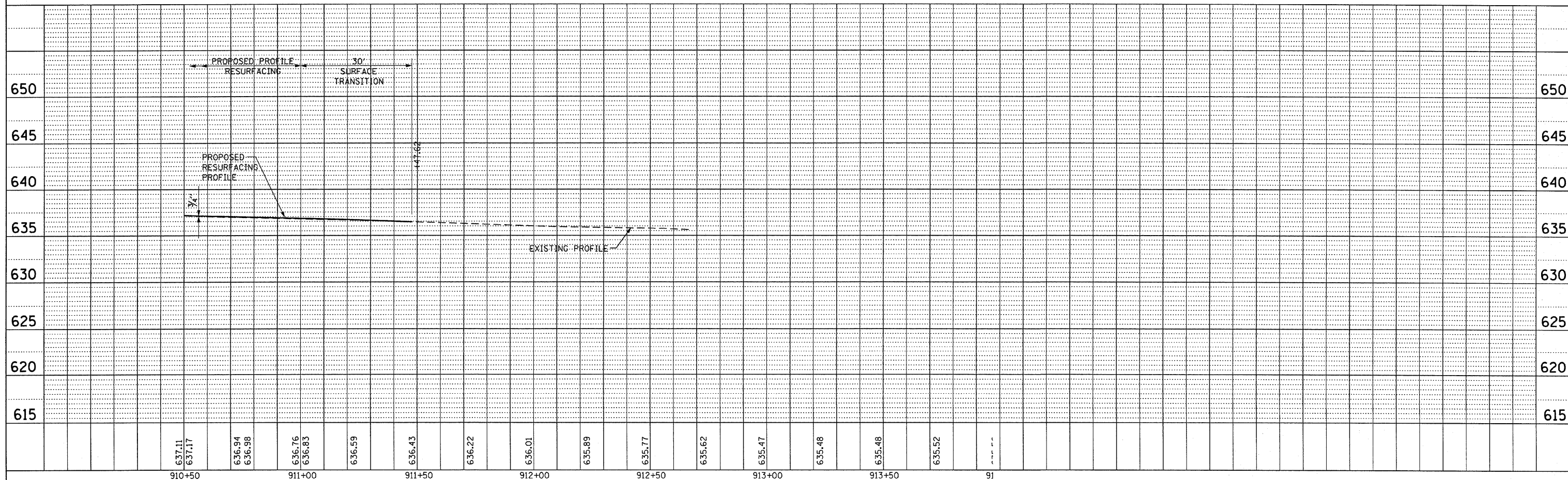
F.A.P. RTE.	SECTION	COUNTY	TOTAL SHEETS	SHEET NO.
619	TO RS-5 & I	LASALLE	214	41
STA. 910+50.00 TO STA. 915+00.00				
FED. ROAD DIST. NO. 3 ILLINOIS FED. AID PROJECT				



PLAN	DATE
SURVEYED	
PLOTTED	
CHECKED	
REVISIONS	
NO. _____	DATE _____



PROFILE	DATE
SURVEYED	
PLOTTED	
CHECKED	
REVISIONS	
NO. _____	DATE _____



PLAN & PROFILE, FAP ROUTE 619 (IL 71) STA. 910+50.00 TO STA. 915+00.00