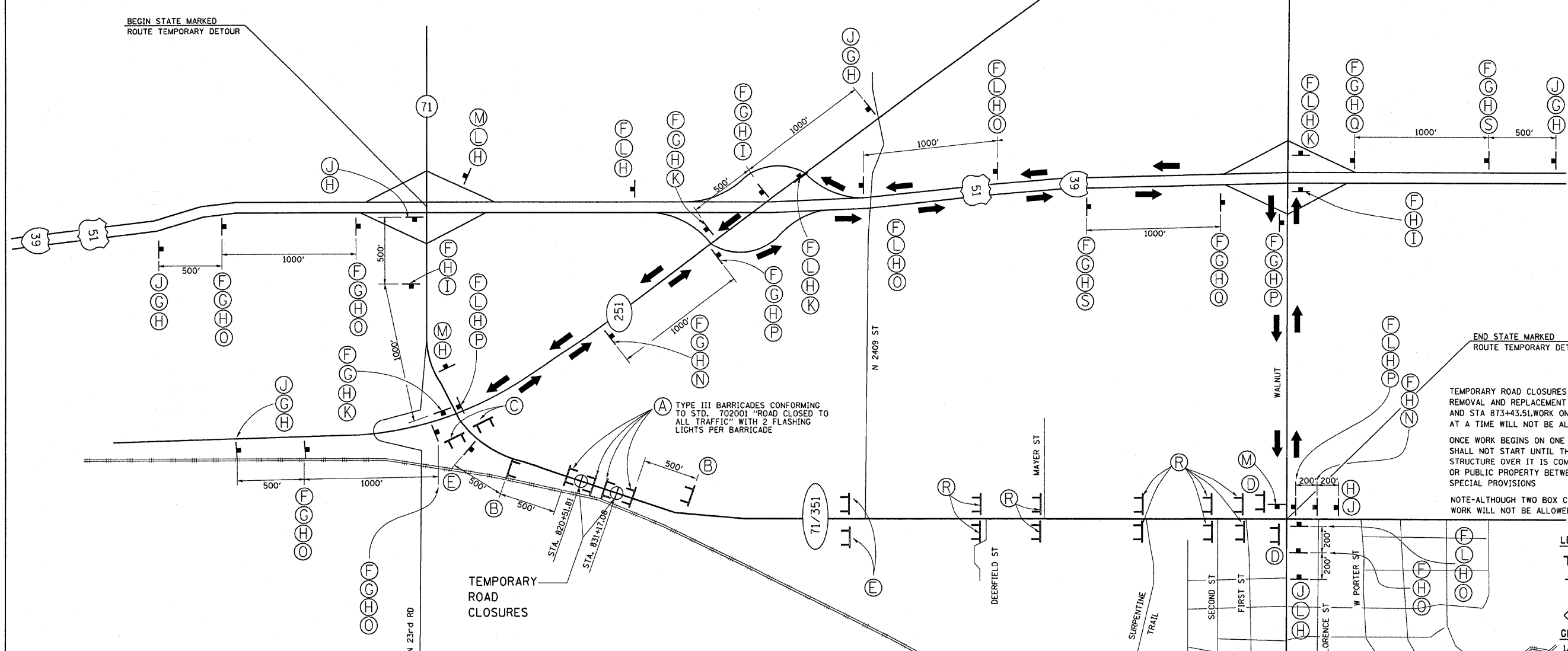
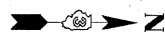


F.A.P. RTE.	SECTION	COUNTY	TOTAL SHEETS	SHEET NO.
619	70 RS-5 & I	LASALLE	214	4B
STA. TO STA.		FED. ROAD DIST. NO. 3 ILLINOIS FED. AID PROJECT		



(A) TYPE III BARRICADES CONFORMING TO STD. 702001 "ROAD CLOSED TO ALL TRAFFIC" WITH 2 FLASHING LIGHTS PER BARRICADE

TEMPORARY ROAD CLOSURES ON IL ROUTE 71-351 WILL BE REQUIRED FOR REMOVAL AND REPLACEMENT OF THE CULVERTS AT STA 820+51.81, STA 831+17.08, AND STA 873+43.51. WORK ON MORE THAN ONE OF THESE BOX CULVERTS AT A TIME WILL NOT BE ALLOWED.

ONCE WORK BEGINS ON ONE BOX CULVERT, WORK ON ANY OTHER BOX CULVERT SHALL NOT START UNTIL THE PREVIOUS BOX CULVERT AND THE PAVEMENT STRUCTURE OVER IT IS COMPLETELY INSTALLED SO THAT ACCESS TO PRIVATE OR PUBLIC PROPERTY BETWEEN THE CULVERTS IS MAINTAINED- SEE SPECIAL PROVISIONS

NOTE-ALTHOUGH TWO BOX CULVERTS ARE SHOWN ON THIS PAGE, WORK WILL NOT BE ALLOWED ON MORE THAN ONE BOX CULVERT AT A TIME.

- LEGEND**
- TYPE III BARRICADES CONFORMING TO STD. 702001
 - SIGNS ON PERMANENT SUPPORTS
 - FLASHING LIGHT ABOVE SIGN
 - 18"x18" ORANG FLAG

- GENERAL NOTES**
1. ALL TRAFFIC CONTROL DEVICES SHALL BE FURNISHED, ERECTED AND MAINTAINED BY THE CONTRACTOR.
 2. ALL SIGNS NOT ATTACHED TO BARRICADES SHALL BE POST MOUNTED UNLESS NOTED OTHERWISE.
 3. LOCATIONS OF TRAFFIC CONTROL DEVICES MAY BE ADJUSTED BY THE ENGINEER.
 4. ALL TRAFFIC CONTROL SHOWN ON THIS SHEET SHALL BE PAID FOR PER EACH FOR TRAFFIC CONTROL AND PROTECTION FOR TEMPORARY DETOUR OTHER ITEMS REQUIRED BY THE ENGINEER AND NOT SHOWN ON THIS DRAWING SHALL BE INCLUDED IN THE PAY ITEM AND NO ADDITIONAL COMPENSATION WILL BE ALLOWED.
 5. THE CONTRACTOR SHALL NOTIFY DISTRICT 3 BUREAU OF OPERATIONS 14 CALENDAR DAYS PRIOR TO PLACING THE DETOUR.
 6. CONTRACTOR IS RESPONSIBLE TO COVER ALL CONFLICTING DIRECTIONAL SIGNS AND ROUTE MARKERS DUE TO THE INSTALLATION OF THE DETOUR ROUTE

TEMPORARY ROAD CLOSURES

(A) ROAD CLOSED R11-2-4830

(B) ROAD CLOSED AHEAD W20-3-4848 (D)

(C) ROAD CLOSED XX MILES AHEAD LOCAL TRAFFIC ONLY R11-3a-6030

(D) ROAD CLOSED XX MILES AHEAD LOCAL TRAFFIC ONLY M4-10-4818

(E) ROAD CLOSED LOCAL TRAFFIC ONLY R11-3a-6030

(F) DETOUR M4-B-2412 (D)

(G) EAST M3-2-2412

(H) IL 71 M1-1100

(H) - 33 EACH

(I) ROAD CLOSED M5-1-2115 (LEFT) (D)

(J) DETOUR AHEAD W20-2-4848 (D)

(K) DETOUR M6-1-2115 (LEFT) (D)

(L) WEST M3-4-2412

(M) END DETOUR M4-80-2418

(N) DETOUR M5-1-2115 (RIGHT) (D)

(O) DETOUR M6-3 (D)

(P) DETOUR M6-1-2115 (RIGHT) (D)

(Q) DETOUR M6-2 (RIGHT)

(R) ROAD CLOSED LOCAL TRAFFIC ONLY R11-3-6030

(S) DETOUR M5-2-2115 (RIGHT) (D)

REVISIONS	
NAME	DATE

ILLINOIS DEPARTMENT OF TRANSPORTATION
TRAFFIC CONTROL & PROTECTION FOR TEMPORARY DETOUR STA. 820+51.81, STA 831+17.08
 FAP ROUTE 619 (IL ROUTE 71 /351)
 SECTION NO. 70 RS-5 & I
 LASALLE COUNTY

SCALE: VERT. DATE
 HORIZ. DATE

DRAWN BY BANDY
 CHECKED BY STEUART