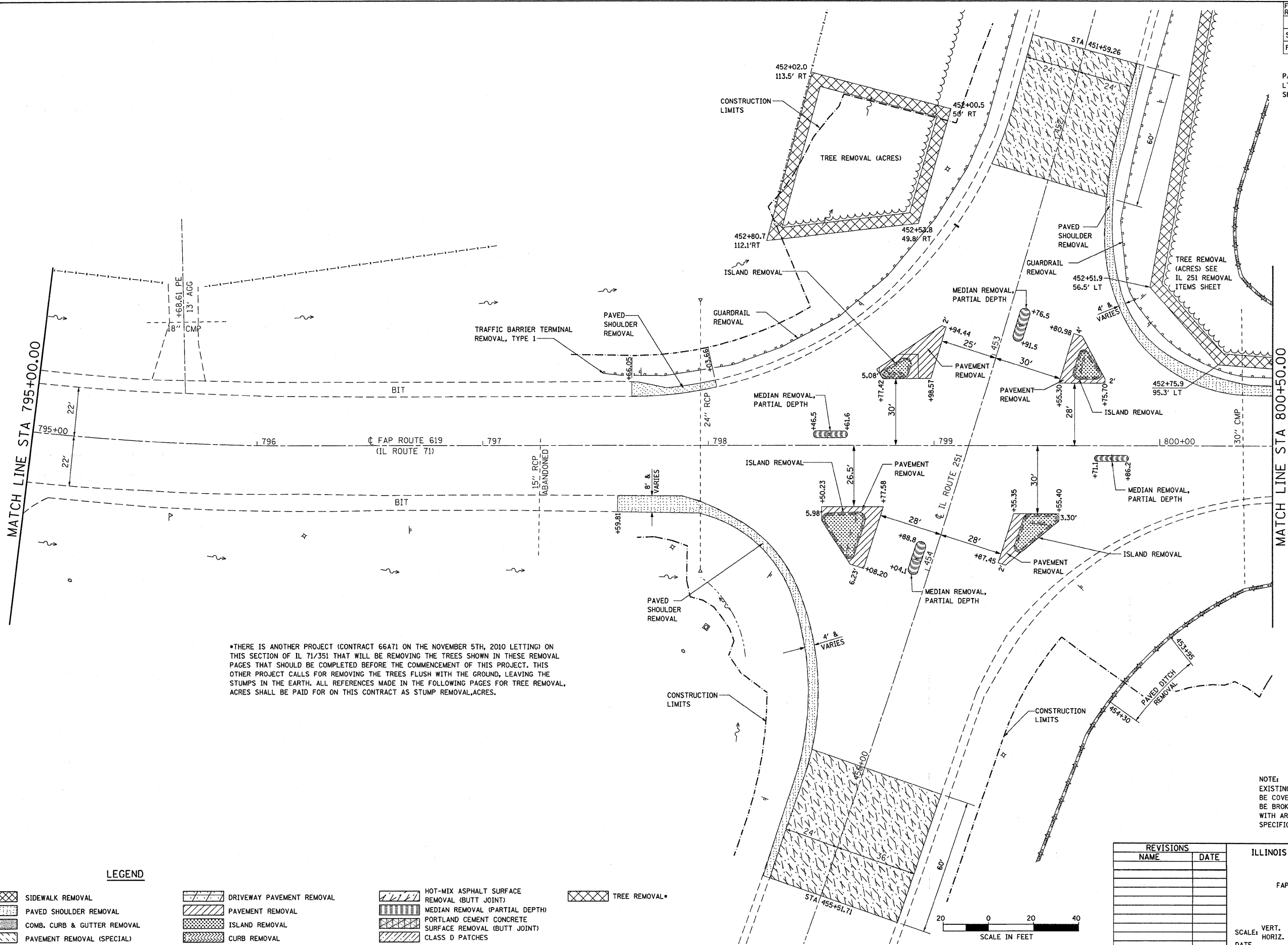
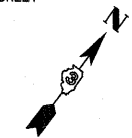


F.A.P. RTE.	SECTION	COUNTY	TOTAL SHEETS	SHEET NO.
619	70 RS-5 & I	LASALLE	24	51
STA. 806+00		TO STA. 817+00.00		
FED. ROAD DIST. NO. 3 ILLINOIS FED. AID PROJECT				

PAVED DITCH REMOVAL
LT STA 450+85 TO STA 451+10
SEE IL 251 REMOVAL ITEMS SHEET



*THERE IS ANOTHER PROJECT (CONTRACT 66A71 ON THE NOVEMBER 5TH, 2010 LETTING) ON THIS SECTION OF IL 71/351 THAT WILL BE REMOVING THE TREES SHOWN IN THESE REMOVAL PAGES THAT SHOULD BE COMPLETED BEFORE THE COMMENCEMENT OF THIS PROJECT. THIS OTHER PROJECT CALLS FOR REMOVING THE TREES FLUSH WITH THE GROUND, LEAVING THE STUMPS IN THE EARTH. ALL REFERENCES MADE IN THE FOLLOWING PAGES FOR TREE REMOVAL, ACRES SHALL BE PAID FOR ON THIS CONTRACT AS STUMP REMOVAL, ACRES.

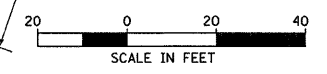
NOTE:
EXISTING PAVED DITCH THAT WILL BE COVERED WITH EMBANKMENT SHALL BE BROKEN INTO PIECES IN ACCORDANCE WITH ARTICLE 205.03 OF THE STANDARD SPECIFICATIONS.

LEGEND

- | | | | |
|-----------------------------|---------------------------|---|---------------|
| SIDEWALK REMOVAL | DRIVEWAY PAVEMENT REMOVAL | HOT-MIX ASPHALT SURFACE REMOVAL (BUTT JOINT) | TREE REMOVAL* |
| PAVED SHOULDER REMOVAL | PAVEMENT REMOVAL | MEDIAN REMOVAL (PARTIAL DEPTH) | |
| COMB. CURB & GUTTER REMOVAL | ISLAND REMOVAL | PORTLAND CEMENT CONCRETE SURFACE REMOVAL (BUTT JOINT) | |
| PAVEMENT REMOVAL (SPECIAL) | CURB REMOVAL | CLASS D PATCHES | |

REVISIONS	
NAME	DATE

ILLINOIS DEPARTMENT OF TRANSPORTATION
REMOVAL ITEMS
FAP ROUTE 619 (IL ROUTE 71 /351)
SECTION NO. 70 RS-5 & I
LASALLE COUNTY



SCALE: VERT. HORIZ.
DATE
DRAWN BY BANDY
CHECKED BY STEUART