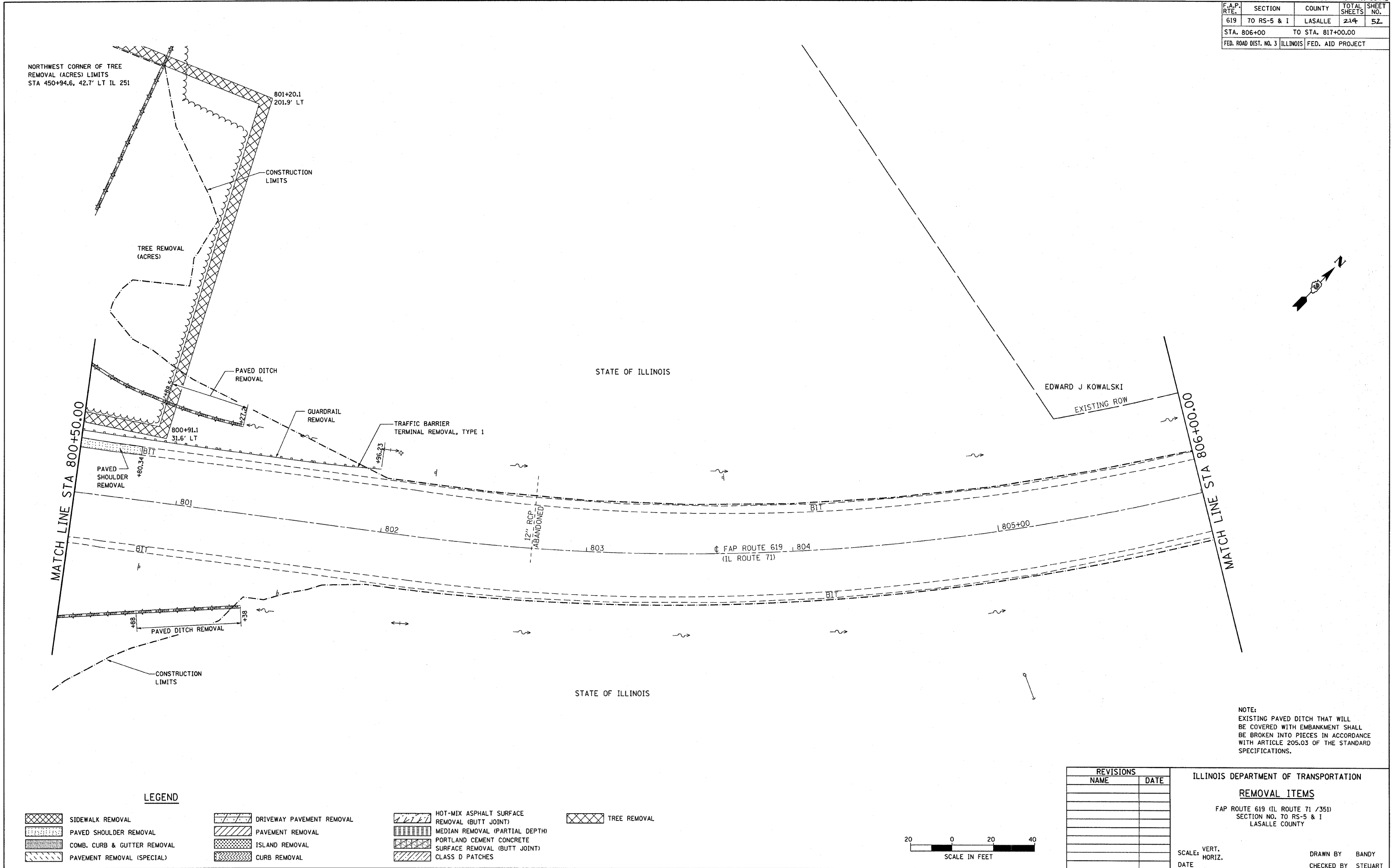


| F.A.P. RTE. | SECTION | COUNTY | TOTAL SHEETS | SHEET NO. |
|-----------------------|-------------|---------------------------|--------------|-----------|
| 619 | 70 RS-5 & I | LASALLE | 214 | 52 |
| STA. 806+00 | | TO STA. 817+00.00 | | |
| FED. ROAD DIST. NO. 3 | | ILLINOIS FED. AID PROJECT | | |



NORTHWEST CORNER OF TREE REMOVAL (ACRES) LIMITS
STA 450+94.6, 42.7' LT IL 251

801+20.1
201.9' LT

CONSTRUCTION LIMITS

TREE REMOVAL (ACRES)

PAVED DITCH REMOVAL

GUARDRAIL REMOVAL

TRAFFIC BARRIER TERMINAL REMOVAL, TYPE 1

PAVED SHOULDER REMOVAL

PAVED DITCH REMOVAL

CONSTRUCTION LIMITS

STATE OF ILLINOIS

EDWARD J KOWALSKI

EXISTING ROW

MATCH LINE STA 800+50.00

MATCH LINE STA 806+00.00

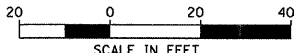
FAP ROUTE 619 (IL ROUTE 71)

12" RCP ABANDONED

NOTE:
EXISTING PAVED DITCH THAT WILL BE COVERED WITH EMBANKMENT SHALL BE BROKEN INTO PIECES IN ACCORDANCE WITH ARTICLE 205.03 OF THE STANDARD SPECIFICATIONS.

LEGEND

- | | | | |
|-----------------------------|---------------------------|---|--------------|
| SIDEWALK REMOVAL | DRIVEWAY PAVEMENT REMOVAL | HOT-MIX ASPHALT SURFACE REMOVAL (BUTT JOINT) | TREE REMOVAL |
| PAVED SHOULDER REMOVAL | PAVEMENT REMOVAL | MEDIAN REMOVAL (PARTIAL DEPTH) | |
| COMB. CURB & GUTTER REMOVAL | ISLAND REMOVAL | PORTLAND CEMENT CONCRETE SURFACE REMOVAL (BUTT JOINT) | |
| PAVEMENT REMOVAL (SPECIAL) | CURB REMOVAL | CLASS D PATCHES | |



| REVISIONS | |
|-----------|------|
| NAME | DATE |
| | |
| | |
| | |
| | |
| | |
| | |
| | |
| | |
| | |
| | |

ILLINOIS DEPARTMENT OF TRANSPORTATION
REMOVAL ITEMS
FAP ROUTE 619 (IL ROUTE 71 / 351)
SECTION NO. 70 RS-5 & I
LASALLE COUNTY

SCALE: VERT. DATE
HORIZ. DATE
DRAWN BY BANDY
CHECKED BY STEUART