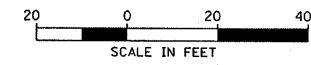
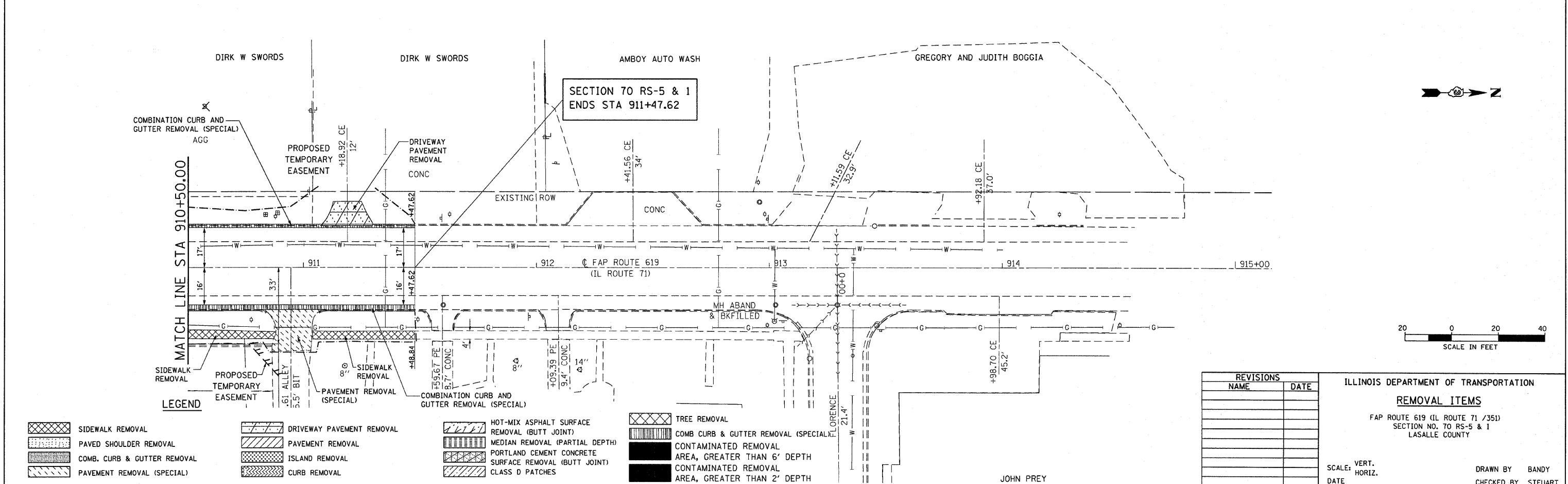
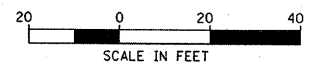
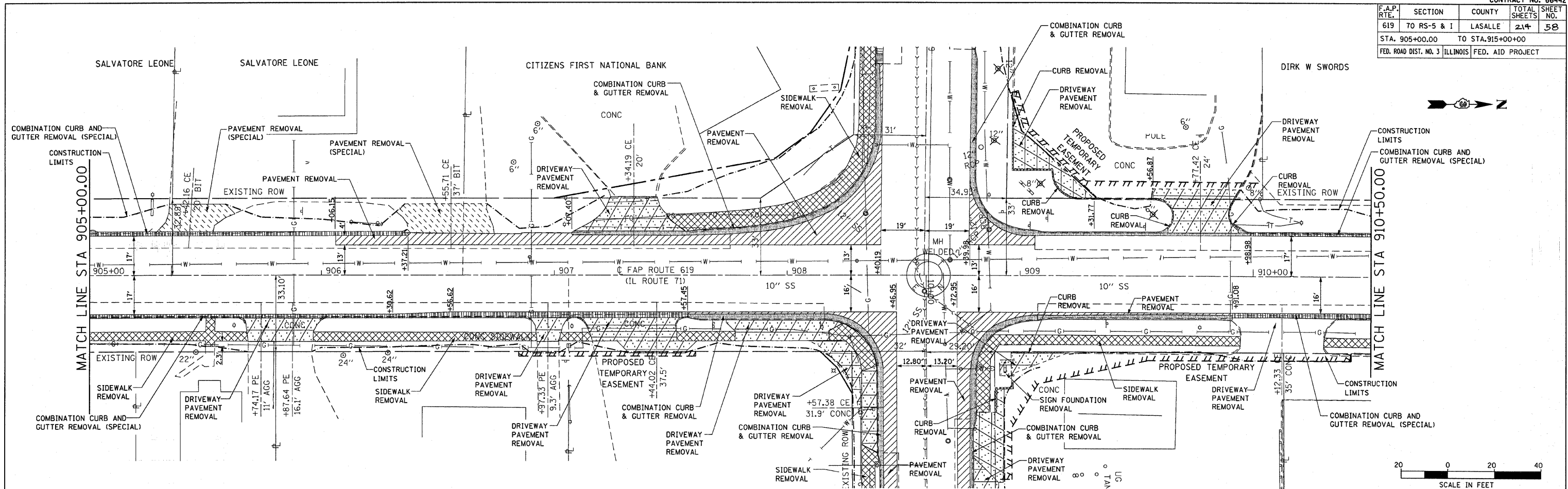


F.A.P. RTE.	SECTION	COUNTY	TOTAL SHEETS	SHEET NO.
619	70 RS-5 & 1	LASALLE	214	58
STA. 905+00.00 TO STA. 915+00+00				
FED. ROAD DIST. NO. 3 ILLINOIS FED. AID PROJECT				



**LEGEND**

	SIDEWALK REMOVAL		DRIVEWAY PAVEMENT REMOVAL		HOT-MIX ASPHALT SURFACE REMOVAL (BUTT JOINT)
	PAVED SHOULDER REMOVAL		PAVEMENT REMOVAL		MEDIAN REMOVAL (PARTIAL DEPTH)
	COMB. CURB & GUTTER REMOVAL		ISLAND REMOVAL		PORTLAND CEMENT CONCRETE SURFACE REMOVAL (BUTT JOINT)
	PAVEMENT REMOVAL (SPECIAL)		CURB REMOVAL		CLASS D PATCHES
	TREE REMOVAL		COMB CURB & GUTTER REMOVAL (SPECIAL)		CONTAMINATED REMOVAL AREA, GREATER THAN 6' DEPTH
	CONTAMINATED REMOVAL AREA, GREATER THAN 2' DEPTH				

**REVISIONS**

NAME	DATE

ILLINOIS DEPARTMENT OF TRANSPORTATION  
**REMOVAL ITEMS**  
 FAP ROUTE 619 (IL ROUTE 71 /351)  
 SECTION NO. 70 RS-5 & 1  
 LASALLE COUNTY

SCALE: VERT. \_\_\_\_\_  
 DATE \_\_\_\_\_

DRAWN BY BANDY  
 CHECKED BY STEUART