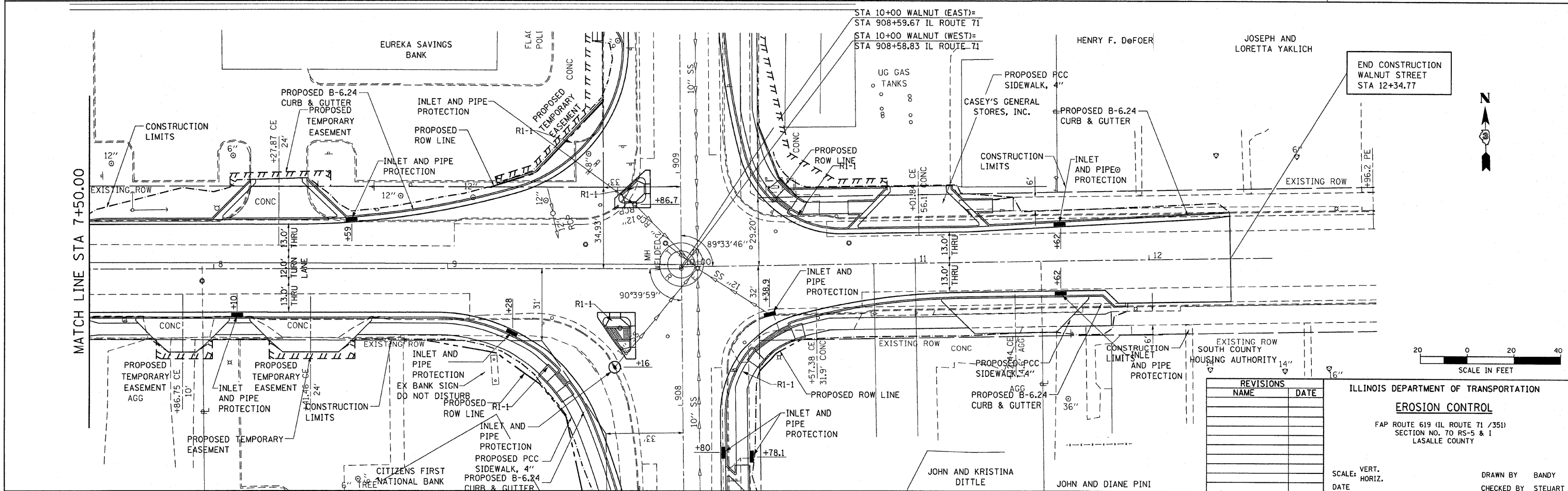
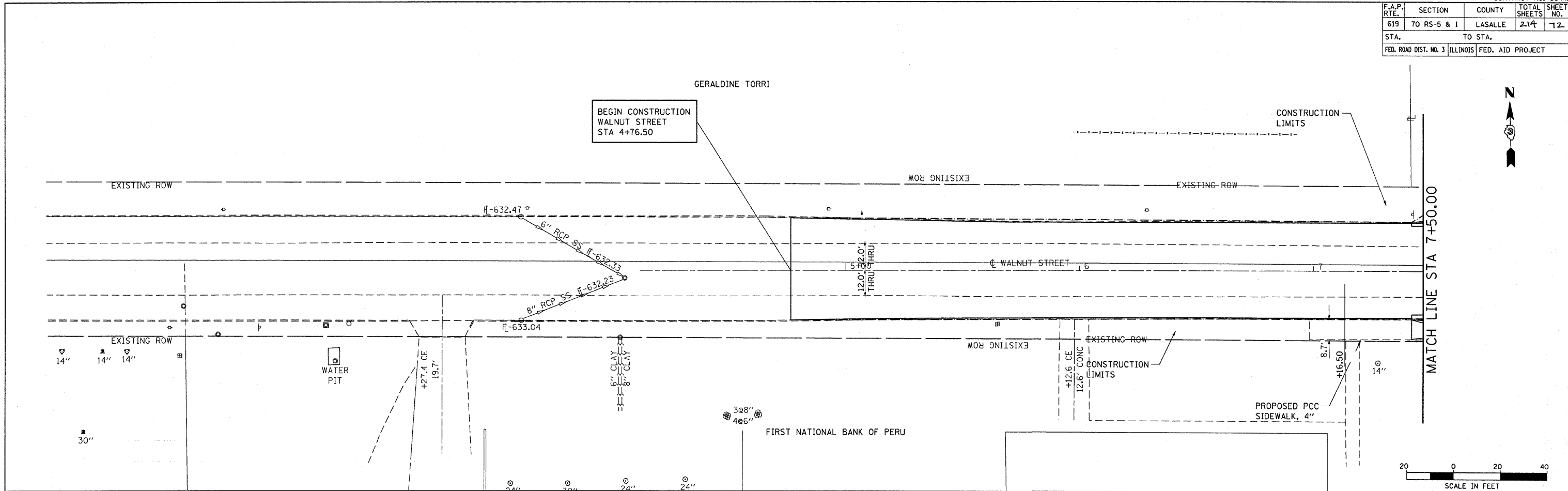


F.A.P. RTE.	SECTION	COUNTY	TOTAL SHEETS	SHEET NO.
619	70 RS-5 & I	LASALLE	214	12
STA. TO STA.		FED. ROAD DIST. NO. 3 ILLINOIS FED. AID PROJECT		



REVISIONS	
NAME	DATE

ILLINOIS DEPARTMENT OF TRANSPORTATION
EROSION CONTROL
 FAP ROUTE 619 (IL ROUTE 71 /351)
 SECTION NO. 70 RS-5 & I
 LASALLE COUNTY

SCALE: VERT. _____
 HORIZ. _____
 DATE _____

DRAWN BY BANDY
 CHECKED BY STEUART