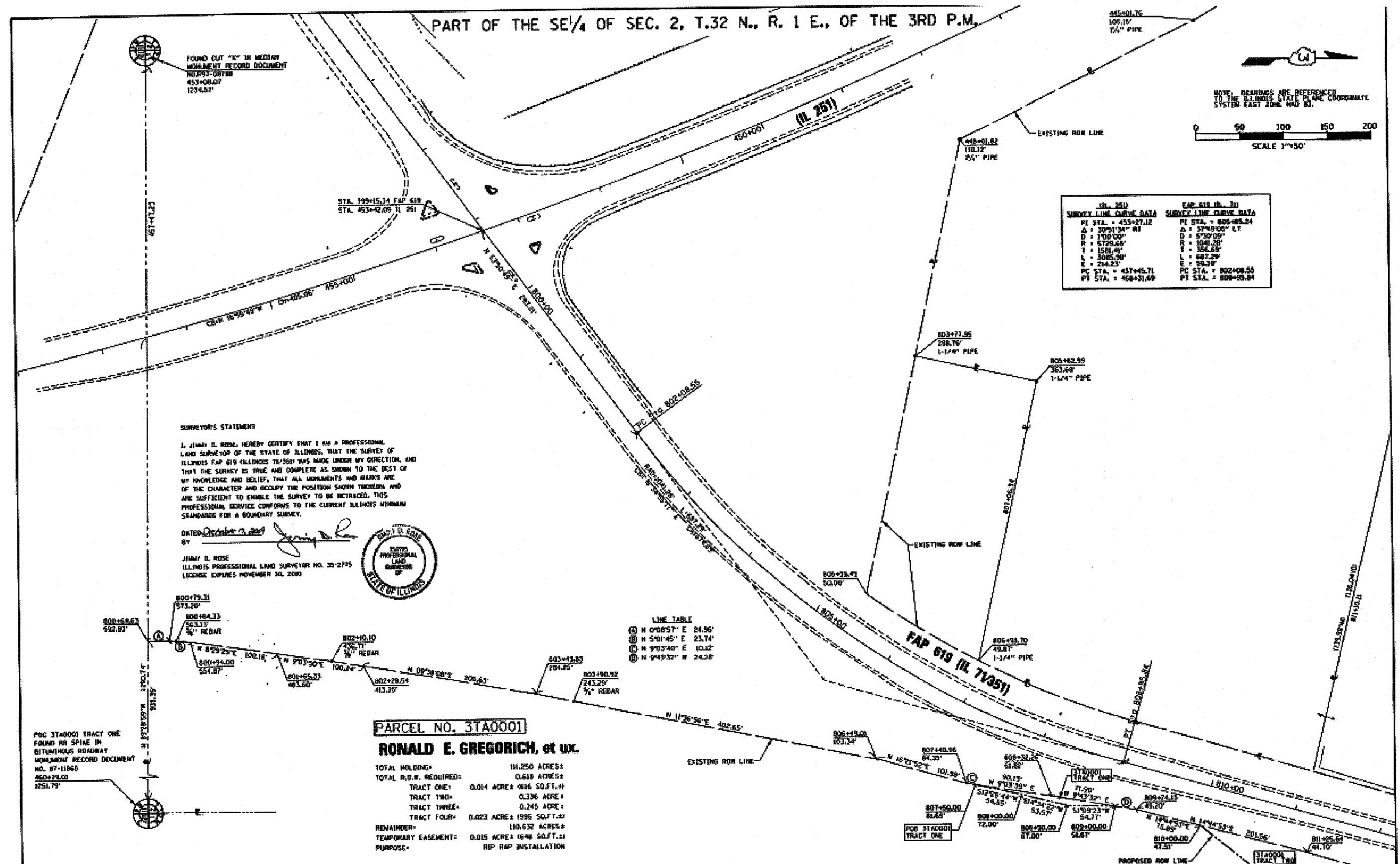


PART OF THE SE 1/4 OF SEC. 2, T.32 N., R. 1 E., OF THE 3RD P.M.



SURVEY LINE CURVE DATA		SURVEY LINE CURVE DATA	
PI STA. = 453+27.12	Δ = 30°51'34" R	PI STA. = 802+85.24	Δ = 57°49'05" LT
D = 1700.00'	R = 5729.65'	D = 5700.00'	R = 1048.25'
T = 1538.40'	L = 3085.90'	T = 358.58'	L = 687.29'
E = 244.23'	PC STA. = 437+45.71	E = 59.38'	PC STA. = 802+08.55
PT STA. = 468+31.69	PI STA. = 468+31.69	PT STA. = 808+28.84	PI STA. = 808+28.84

SURVEYOR'S STATEMENT

I, JIMMY D. ROSE, HEREBY CERTIFY THAT I AM A PROFESSIONAL LAND SURVEYOR OF THE STATE OF ILLINOIS, THAT THE SURVEY OF ILLINOIS FAP 619 (IL 71051) WAS MADE UNDER MY DIRECTION, AND THAT THE SURVEY IS TRUE AND COMPLETE AS SHOWN TO THE BEST OF MY KNOWLEDGE AND BELIEF, THAT ALL MONUMENTS AND MARKS ARE OF THE CHARACTER AND OCCUPY THE POSITIONS SHOWN THEREON, AND ARE SUFFICIENT TO ENABLE THE SURVEY TO BE RETRACED, THIS PROFESSIONAL SERVICE CONFORMS TO THE CURRENT ILLINOIS MINIMUM STANDARDS FOR A BOUNDARY SURVEY.

DATED October 3, 2010
BY Jimmy D. Rose

JIMMY D. ROSE
ILLINOIS PROFESSIONAL LAND SURVEYOR NO. 22-2735
LICENSE EXPIRES NOVEMBER 30, 2019



LINE TABLE

①	N 0°08'57" E	24.56'
②	N 5°01'45" E	23.74'
③	N 9°03'40" E	10.32'
④	N 9°49'32" E	24.28'

PARCEL NO. 3TA0001

RONALD E. GREGORICH, et ux.

TOTAL HOLDING*	111.250 ACRES±
TOTAL R.O.W. REQUIRED*	0.618 ACRES±
TRACT ONE*	0.041 ACRES± (896 SQ.FT.±)
TRACT TWO*	0.336 ACRES±
TRACT THREE*	0.245 ACRES±
TRACT FOUR*	0.023 ACRES± (996 SQ.FT.±)
REMAINDER*	110.632 ACRES±
TEMPORARY EASEMENT PURPOSE*	0.015 ACRES± (1698 SQ.FT.±) REP RAP INSTALLATION

POB 31A0001 TRACT ONE FOUND RR SPIRE IN BITUMINOUS ROADWAY MONUMENT RECORD DOCUMENT NO. 87-11866 463+73.00 3251.79'