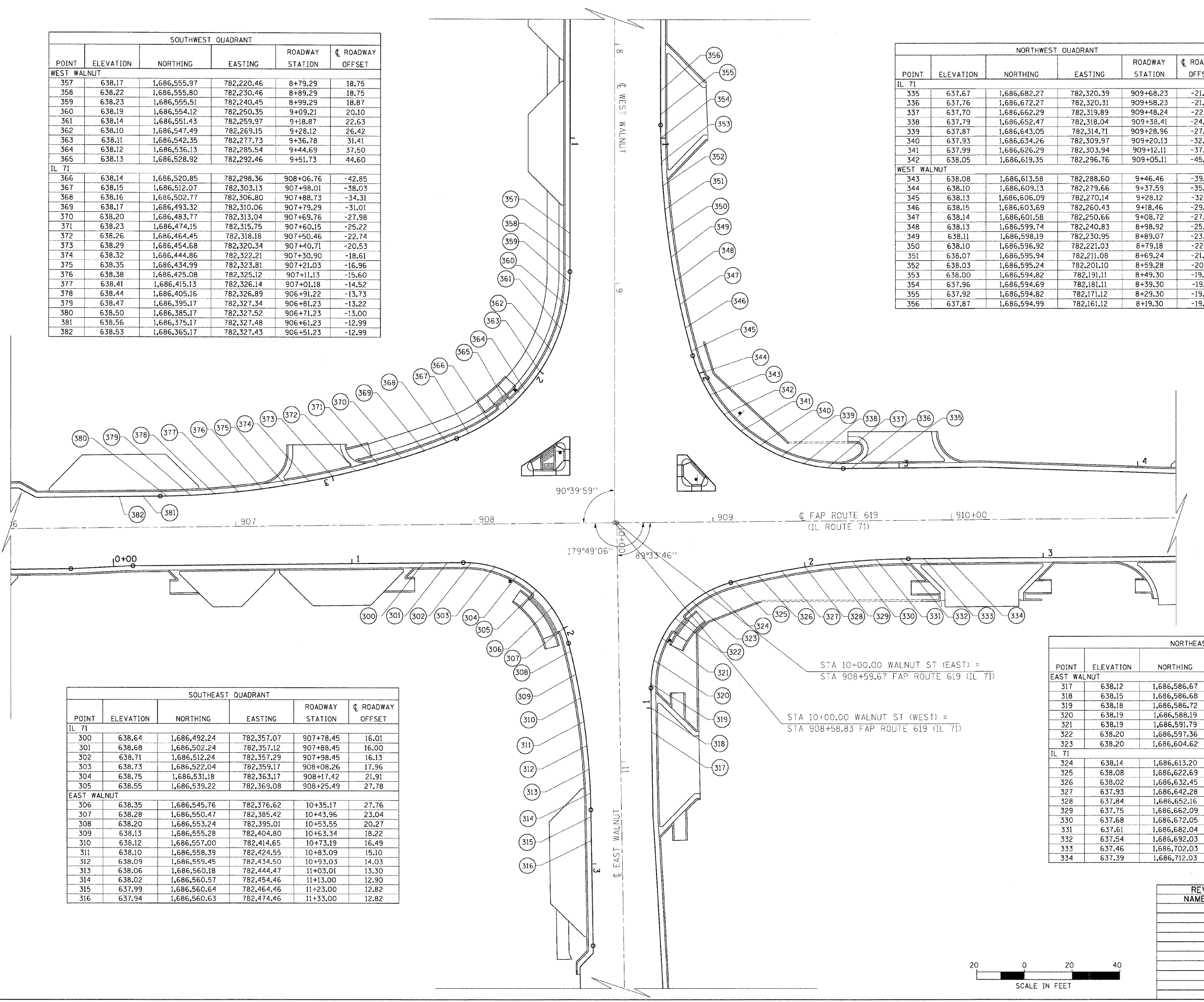


F.A.P. RTE.	SECTION	COUNTY	TOTAL SHEETS	SHEET NO.
619	70 RS-5 & I	LASALLE	214	88
STA.		TO STA.		
FED. ROAD DIST. NO. 3		ILLINOIS FED. AID PROJECT		

SOUTHWEST QUADRANT					
POINT	ELEVATION	NORTHING	EASTING	ROADWAY STATION	ROADWAY OFFSET
WEST WALNUT					
357	638.17	1,686,555.97	782,220.46	8+79.29	18.75
358	638.22	1,686,555.80	782,230.46	8+89.29	18.75
359	638.23	1,686,555.51	782,240.45	8+99.29	18.87
360	638.19	1,686,554.12	782,250.35	9+09.21	20.10
361	638.14	1,686,551.43	782,259.97	9+18.87	22.63
362	638.10	1,686,547.49	782,269.15	9+28.12	26.42
363	638.11	1,686,542.35	782,277.73	9+36.78	31.41
364	638.12	1,686,536.13	782,285.54	9+44.69	37.50
365	638.13	1,686,528.92	782,292.46	9+51.73	44.60
IL 71					
366	638.14	1,686,520.85	782,298.36	908+06.76	-42.85
367	638.15	1,686,512.07	782,303.13	907+98.01	-38.03
368	638.16	1,686,502.77	782,306.80	907+88.73	-34.31
369	638.17	1,686,493.32	782,310.06	907+79.29	-31.01
370	638.20	1,686,483.77	782,313.04	907+69.76	-27.98
371	638.23	1,686,474.15	782,315.75	907+60.15	-25.22
372	638.26	1,686,464.45	782,318.18	907+50.46	-22.74
373	638.29	1,686,454.68	782,320.34	907+40.71	-20.53
374	638.32	1,686,444.86	782,322.21	907+30.90	-18.61
375	638.35	1,686,434.99	782,323.81	907+21.03	-16.96
376	638.38	1,686,425.08	782,325.12	907+11.13	-15.60
377	638.41	1,686,415.13	782,326.14	907+01.18	-14.52
378	638.44	1,686,405.16	782,326.89	906+91.22	-13.73
379	638.47	1,686,395.17	782,327.34	906+81.23	-13.22
380	638.50	1,686,385.17	782,327.52	906+71.23	-13.00
381	638.56	1,686,375.17	782,327.48	906+61.23	-12.99
382	638.53	1,686,365.17	782,327.43	906+51.23	-12.99

NORTHWEST QUADRANT					
POINT	ELEVATION	NORTHING	EASTING	ROADWAY STATION	ROADWAY OFFSET
IL 71					
335	637.67	1,686,682.27	782,320.39	909+68.23	-21.97
336	637.76	1,686,672.27	782,320.31	909+58.23	-21.98
337	637.70	1,686,662.29	782,319.89	909+48.24	-22.31
338	637.79	1,686,652.47	782,318.04	909+38.41	-24.08
339	637.87	1,686,643.05	782,314.71	909+28.96	-27.34
340	637.93	1,686,634.26	782,309.97	909+20.13	-32.00
341	637.99	1,686,626.29	782,303.94	909+12.11	-37.96
342	638.05	1,686,619.35	782,296.76	909+05.11	-45.09
WEST WALNUT					
343	638.08	1,686,613.58	782,288.60	9+46.46	-39.99
344	638.10	1,686,609.13	782,279.66	9+37.59	-35.40
345	638.13	1,686,606.09	782,270.14	9+28.12	-32.19
346	638.15	1,686,603.69	782,260.43	9+18.46	-29.64
347	638.14	1,686,601.58	782,250.66	9+08.72	-27.36
348	638.13	1,686,599.74	782,240.83	8+98.92	-25.36
349	638.11	1,686,598.19	782,230.95	8+89.07	-23.64
350	638.10	1,686,596.92	782,221.03	8+79.18	-22.21
351	638.07	1,686,595.94	782,211.08	8+69.24	-21.05
352	638.03	1,686,595.24	782,201.10	8+59.28	-20.19
353	638.00	1,686,594.82	782,191.11	8+49.30	-19.60
354	637.96	1,686,594.69	782,181.11	8+39.30	-19.31
355	637.92	1,686,594.82	782,171.12	8+29.30	-19.27
356	637.87	1,686,594.99	782,161.12	8+19.30	-19.27

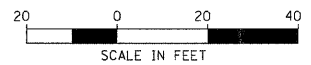


SOUTHEAST QUADRANT					
POINT	ELEVATION	NORTHING	EASTING	ROADWAY STATION	ROADWAY OFFSET
IL 71					
300	638.64	1,686,492.24	782,357.07	907+78.45	16.01
301	638.68	1,686,502.24	782,357.12	907+88.45	16.00
302	638.71	1,686,512.24	782,357.29	907+98.45	16.13
303	638.73	1,686,522.04	782,359.17	908+08.26	17.96
304	638.75	1,686,531.18	782,363.17	908+17.42	21.91
305	638.55	1,686,539.22	782,369.08	908+25.49	27.78
EAST WALNUT					
306	638.35	1,686,545.76	782,376.62	10+35.17	27.76
307	638.28	1,686,550.47	782,385.42	10+43.96	23.04
308	638.20	1,686,553.24	782,395.01	10+53.55	20.27
309	638.13	1,686,555.28	782,404.80	10+63.34	18.22
310	638.12	1,686,557.00	782,414.65	10+73.19	16.49
311	638.10	1,686,558.39	782,424.55	10+83.09	15.10
312	638.09	1,686,559.45	782,434.50	10+93.03	14.03
313	638.06	1,686,560.18	782,444.47	11+03.01	13.30
314	638.02	1,686,560.57	782,454.46	11+13.00	12.90
315	637.99	1,686,560.64	782,464.46	11+23.00	12.82
316	637.94	1,686,560.63	782,474.46	11+33.00	12.82

NORTHEAST QUADRANT					
POINT	ELEVATION	NORTHING	EASTING	ROADWAY STATION	ROADWAY OFFSET
EAST WALNUT					
317	638.12	1,686,586.67	782,429.33	10+87.85	-13.19
318	638.15	1,686,586.68	782,419.33	10+77.85	-13.19
319	638.18	1,686,586.72	782,409.33	10+67.85	-13.22
320	638.19	1,686,588.19	782,399.46	10+57.98	-14.68
321	638.19	1,686,591.79	782,390.15	10+48.67	-18.28
322	638.20	1,686,597.36	782,381.87	10+40.39	-23.85
323	638.20	1,686,604.62	782,375.02	10+33.53	-31.10
IL 71					
324	638.14	1,686,613.20	782,369.94	908+99.57	28.14
325	638.08	1,686,622.69	782,366.84	909+09.03	24.96
326	638.02	1,686,632.45	782,364.66	909+18.77	22.70
327	637.93	1,686,642.28	782,362.81	909+28.58	20.77
328	637.84	1,686,652.16	782,361.28	909+38.45	19.16
329	637.75	1,686,662.09	782,360.09	909+48.37	17.89
330	637.68	1,686,672.05	782,359.23	909+58.32	16.94
331	637.61	1,686,682.04	782,358.69	909+68.31	16.33
332	637.54	1,686,692.03	782,358.50	909+78.30	16.05
333	637.46	1,686,702.03	782,358.56	909+88.30	16.03
334	637.39	1,686,712.03	782,358.65	909+98.30	16.03

REVISIONS	
NAME	DATE

ILLINOIS DEPARTMENT OF TRANSPORTATION
PAVEMENT ELEVATIONS
 FAP ROUTE 619 (IL ROUTE 71 /351)
 SECTION NO. 70 RS-5 & I
 LASALLE COUNTY



SCALE: VERT. HORIZ.
 DATE
 DRAWN BY BANDY
 CHECKED BY STEUART