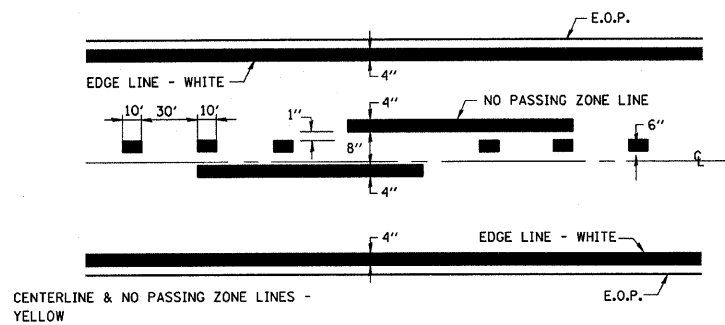
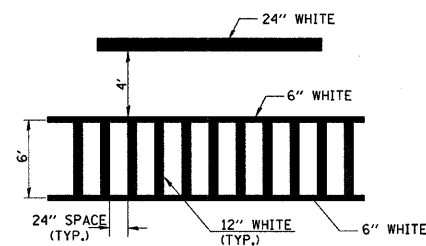


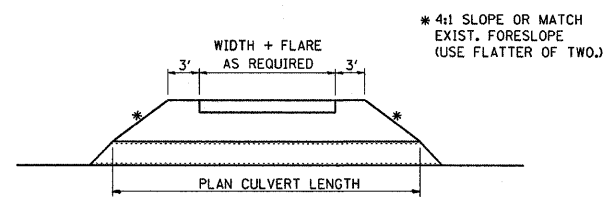
F.A.P. RTE.	SECTION	COUNTY	TOTAL SHEETS	SHEET NO.
619	70 RS-5 & I	LASALLE	21A	101
STA.				
FED. ROAD DIST. NO. 3 ILLINOIS FED. AID PROJECT				



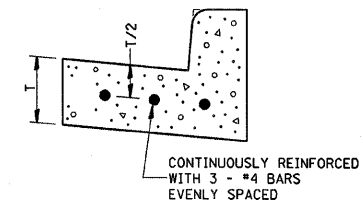
PAVEMENT MARKING DETAIL



TYPICAL SPACING DETAIL FOR CROSSWALKS AND STOP BARS

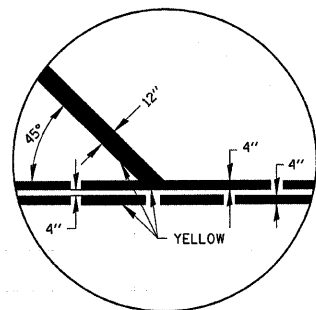


ENTRANCE CULVERT DETAIL

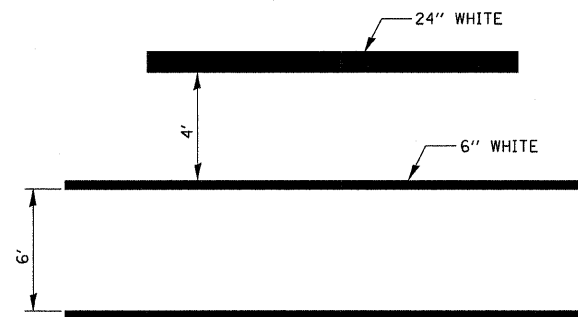


REINFORCEMENT SHALL NOT BE PAID FOR SEPARATELY BUT WILL BE INCLUDED IN THE CONTRACT UNIT PRICE FOR CC&G.

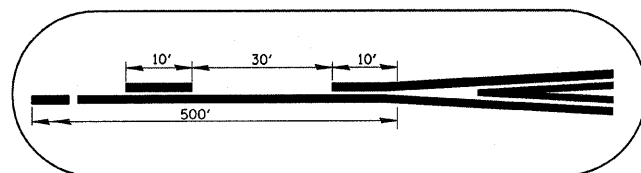
REINFORCEMENT DETAIL FOR COMBINATION CONCRETE CURB AND GUTTER TYPE B-6.24



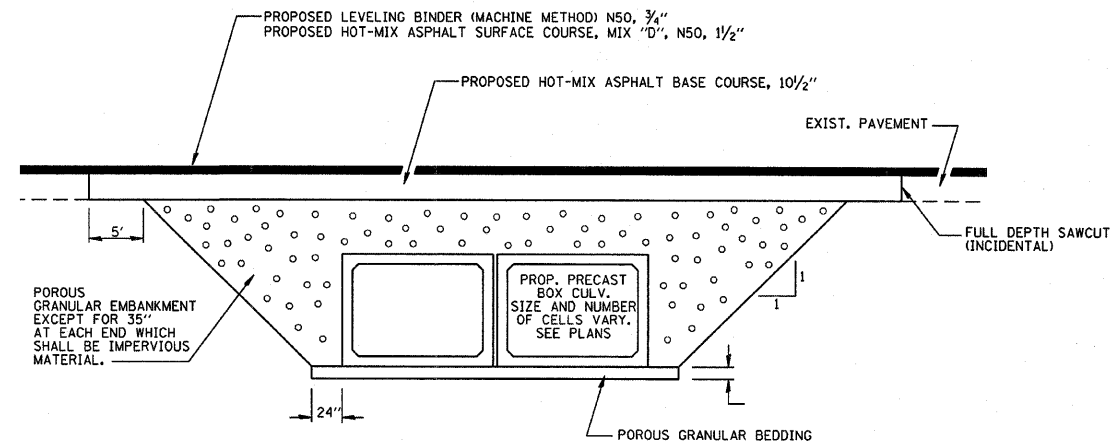
TYPICAL DIAGONAL APPLICATION



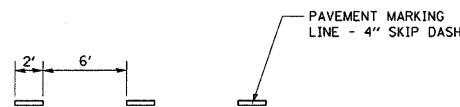
TYPICAL SPACING DETAIL FOR CROSSWALKS (FIRST ST, SECOND ST)



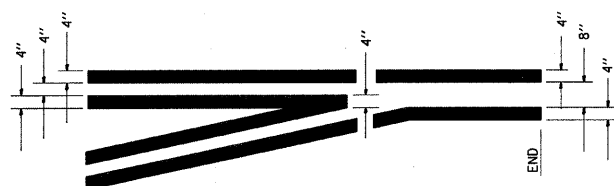
CHANNELIZATION APPROACH DETAIL



SECTION THROUGH PRECAST BOX CULVERT (TYPICAL)



TYPICAL APPLICATION APPROACHING LEFT TURN LANES



TYPICAL APPLICATION @ LEFT TURN LANES

REVISIONS	
NAME	DATE

ILLINOIS DEPARTMENT OF TRANSPORTATION

MISCELLANEOUS DETAILS

FAP ROUTE 619 (IL ROUTE 71/351) SECTION NO. 70 RS-5 & I LASALLE COUNTY

SCALE: DATE

DRAWN BY BANDY CHECKED BY STEUART