

F.A. RTE.	SECTION	COUNTY	TOTAL SHEETS	SHEET NO.
VARIOUS	*	VARIOUS	8	1
		ILLINOIS	CONTRACT NO. 66A59	

* D3 BRIDGE DECK SEALING 2011

INDEX OF SHEETS

- 1 COVER SHEET
- 2 SUMMARY OF QUANTITIES
- 3-5 BRIDGE SEALING SCHEDULE
- 6-7 LOCATION MAPS
- 8 SEALING DETAILS

STANDARDS

- 000001-06 STANDARD SYMBOLS, ABBREVIATIONS AND PATTERNS
- 701201-04 LANE CLOSURE, 2L, 2W, DAY ONLY, FOR SPEEDS ≥ 45 MPH
- 701400-05 APPROACH TO LANE CLOSURE, FREEWAY/EXPRESSWAY
- 701406-06 LANE CLOSURE, FREEWAY/EXPRESSWAY, DAY OPERATIONS ONLY
- 701411-07 LANE CLOSURE, MULTILANE, AT ENTRANCE OR EXIT RAMP FOR SPEEDS ≥ 45 MPH
- 701456-01 PARTIAL EXIT RAMP CLOSURE FREEWAY/EXPRESSWAY
- 701501-06 URBAN LANE CLOSURE, 2L, 2W, UNDIVIDED
- 701601-07 URBAN LANE CLOSURE, MULTILANE, 1W OR 2W WITH NONTRAVERSABLE MEDIAN
- 701901-01 TRAFFIC CONTROL DEVICES

**STATE OF ILLINOIS
DEPARTMENT OF TRANSPORTATION**

DIVISION OF HIGHWAYS

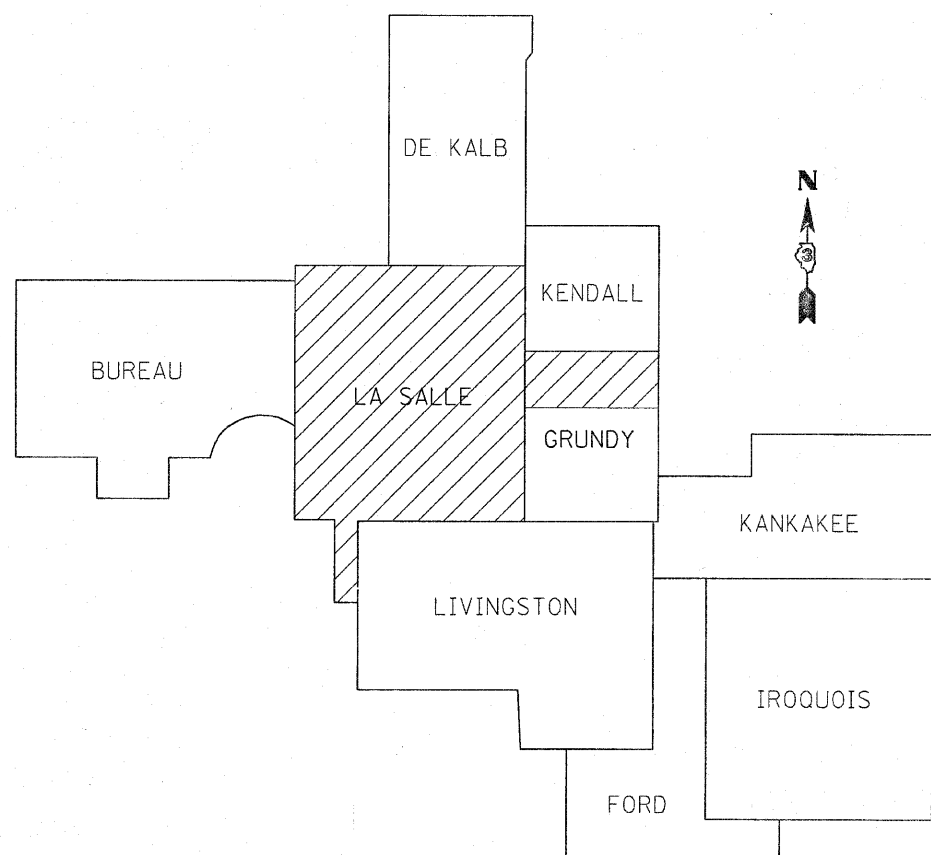
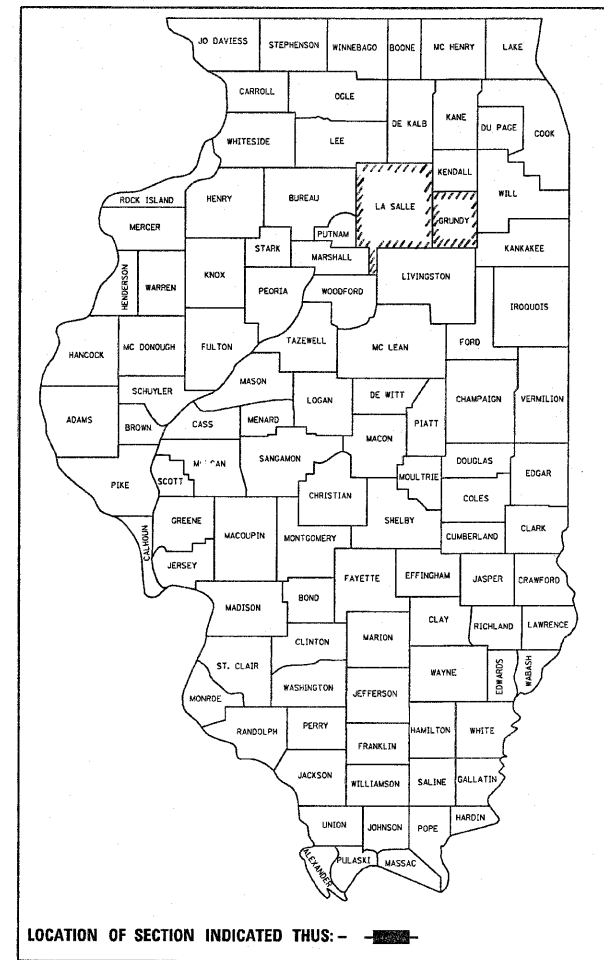
**PROPOSED
HIGHWAY PLANS**

**VARIOUS ROUTES
SECTION D3 BRIDGE DECK SEALING 2011**

**BRIDGE DECK SEALING
VARIOUS COUNTIES**

C-93-159-10

D-93-063-10



MICROFILMED _____
 REEL NUMBER _____
 AWARDED _____
 RESIDENT ENGINEER _____
 AS BUILT CHANGES WERE MADE
 ON THE FOLLOWING SHEETS _____

J.U.L.I.E.
 JOINT UTILITY LOCATION INFORMATION FOR EXCAVATION
 1-800-892-0123
 OR 811

PROJECT ENGINEER: CRAIG REED 815-434-8420
UNIT CHIEF: BRAD DUNCAN 815-434-8562

CONTRACT NO. 66A59

**STATE OF ILLINOIS
DEPARTMENT OF TRANSPORTATION
DIVISION OF HIGHWAYS**

SUBMITTED October 27 20 10
George Ryzman
 DEPUTY DIRECTOR OF HIGHWAYS, REGION ENGINEER

December 10 20 10
Scott E. Still, P.E.
 acting ENGINEER OF DESIGN AND ENVIRONMENT

December 10 20 10
Christina M. Reed, P.E.
 DIRECTOR OF HIGHWAYS, CHIEF ENGINEER

**PRINTED BY THE AUTHORITY
OF THE STATE OF ILLINOIS**

CODE NO.	ITEM	UNIT	100% STATE
			CONSTR. CODE
			0014
			TOTAL QUANTITY
58700300	CONCRETE SEALER	SQ FT	1,154,701
67100100	MOBILIZATION	L SUM	1
70100420	TRAFFIC CONTROL AND PROTECTION, STANDARD 701411	EACH	3
70100450	TRAFFIC CONTROL AND PROTECTION, STANDARD 701201	L SUM	1
70100700	TRAFFIC CONTROL AND PROTECTION, STANDARD 701406	L SUM	1
70100825	TRAFFIC CONTROL AND PROTECTION, STANDARD 701456	L SUM	1
70102620	TRAFFIC CONTROL AND PROTECTION, STANDARD 701501	L SUM	1
70102630	TRAFFIC CONTROL AND PROTECTION, STANDARD 701601	L SUM	1

GENERAL NOTES

ANY REFERENCE TO A STANDARD IN THESE PLANS SHALL BE INTERPRETED TO MEAN THE EDITION AS INDICATED BY THE SUBNUMBER SHOWN IN THE LIST OF STANDARDS OR THE COPY INCLUDED IN THESE PLANS.

STATE OF ILLINOIS
DEPARTMENT OF TRANSPORTATION
DISTRICT THREE

PREPARED BY: Tom Brunel
DISTRICT STUDIES & PLANS ENGINEER

DATE: 10/27/10

EXAMINED BY: [Signature]
DISTRICT CONSTRUCTION ENGINEER

[Signature]
DISTRICT MATERIALS ENGINEER

[Signature]
DISTRICT OPERATIONS ENGINEER

FILE NAME =	USER NAME = verdinml	DESIGNED -	REVISED -	STATE OF ILLINOIS DEPARTMENT OF TRANSPORTATION	SUMMARY OF QUANTITIES	F.A. RTE.	SECTION	COUNTY	TOTAL SHEETS	SHEET NO.
ct:\pw\work\p\dot\verdine\1\0190485\DeskSealing-11.dgn		DRAWN -	REVISED -			VAR	*	VARIOUS	8	2
PLOT SCALE = 50.0000' / IN.		CHECKED -	REVISED -			*D3 BRIDGE DECK SEALING 2011		CONTRACT NO. 66A59		
PLOT DATE = Oct 14, 2010 - 09:10:30 AM		DATE -	REVISED -			SCALE:	SHEET NO.	OF SHEETS	STA.	TO STA.

CONCRETE SEALER

STRUCTURE NUMBER	FACILITY CARRIED	APPROXIMATE LOCATION	FEATURE CROSSED	DECK WIDTH FEET	PARAPET/CURB SURFACE (BOTH SIDES) FEET	MEDIAN SURFACE FEET	DECK LENGTH FEET	SEAL AREA SQ FT	TRAFFIC CONTROL AND PROTECTION STANDARD
LASALLE COUNTY INTERSTATE									
050-0003	I-80 EASTBOUND	1.1 MILES EAST OF	E 3RD RD/	39	1.2		45	1,809	701406
050-0004	I-80 WESTBOUND	IL 251 INTERCHANGE	CHARTRES ST	39	1.2		45	1,809	701406
050-0007	I-80 EASTBOUND	5.3 MILES EAST OF	PECUMSAUGAN	40	7		150	7,050	701406
050-0008	I-80 WESTBOUND	IL 251 INTERCHANGE	CREEK	40	7		150	7,050	701406
050-0011	I-80 EASTBOUND	2.0 MILES EAST	B.N.	40	7		178	8,366	701406
050-0012	I-80 WESTBOUND	OF ILL 23	RAILROAD	40	7		178	8,366	701406
050-0167	I-39 SOUTHBOUND	0.2 MILE NORTH	C & NW	38.5	6.8		176	7,973	701406
050-0168	I-39 NORTHBOUND	OF US 52	RAILROAD	38.5	6.8		176	7,973	701406, 701411
050-0173	I-39 SOUTHBOUND	3.5 MILES	TOMAHAWK	38.5	6.8		136	6,161	701406
050-0174	I-39 NORTHBOUND	NORTH OF I-80	CREEK	38.5	6.8		136	6,161	701406
050-0196	I-39 NB & SB	0.4 MILE S OF US 6	CONVEYOR BELT/RD	81.8	7	7	43	4,119	701406 NB, 701406, 701411 SB
050-0205	I-39 SOUTHBOUND	0.5 MILE	BAILEY	40	7		94.8	4,456	701406, 701411
050-0206	I-39 NORTHBOUND	SOUTH OF CH 54	CREEK	40	7		94.8	4,456	701406
050-0210	I-39 SOUTHBOUND	1.5 MILES NORTH	CON-RAIL	40	7		138.2	6,495	701406
050-0211	I-39 NORTHBOUND	OF ILL 18	RAILROAD	40	7		138.2	6,495	701406
050-0212	I-39 SOUTHBOUND	1.2 MILES	SANDY	40	7		152	7,144	701406
050-0213	I-39 NORTHBOUND	NORTH OF ILL 18	CREEK	40	7		152	7,144	701406
050-0231	I-80 WESTBOUND	2.5 MILES	FOX	40	7		677	31,819	701406
050-0232	I-80 EASTBOUND	EAST OF IL 23	RIVER	40	7		677	31,819	701406
NON-INTERSTATE									
050-0017	ILL 351 FAP 619	0.20 MI S OF US 6	I M CANAL CSX RR	31.5	1.5		662.1	21,849	701501
050-0019	ILL 351 FAP 619	2.0 MI S OF US 6	LONE STAR CEMENT RR	40	7		176.5	8,296	701201
050-0027	US 6/FAU 6088/FAP623	JCT US 6 & ILL 251	ILL 251 FAP 46	76	1.7		145	11,267	701601
050-0051	ILL 23 IN STREATOR	14.30 MI S OF ILL 71	INTER STREAM	30	1.2		40	1,248	701601
050-0058	US ROUTE 52	2.10 MI W OF ILL 71	FOX RIVER	32	7		459	17,901	701201
050-0066	ILL 71	6.78 MI N OF US 6	BRUMBACH CREEK	40	7		126	5,922	701201
050-0069	ILL 170	0.42 MI S OF US 6	ILL MICH CANAL	46.5	1.7		23.8	1,147	701501
050-0079	IL 251	0.1 MI S OF US 6	IL RV/WATER ST/RR	30	7		2292	84,804	701201
050-0087	ILL 178	1.5 MI S OF US 6	ILL MICH CANAL	30	1.5		22	693	701501
050-0089	FAU6046 E18TH RD	1.0 MI E OF ILL 23	FAI 80	26	1.7		212.4	5,883	701201
050-0094	US 6 FAP 623	2.15 MI E OF IL 251	LITTLE VERMILION R	31	7		292	11,096	701501
050-0096	ILL 178	3.6 MI S OF ILL 71	VERMILION RIVER	32	1.7		392	13,210	701201
050-0105	CH 25/FAS 271	4.5 MI E MARSEIL. RD	FAI 80	26	1.7		196	5,429	701201
050-0110	US 6 W OF MARSEILLES	4.51 MI E OF ILL 71	LONG CREEK	30	1.7		29.7	941	701501
050-0117	US 6	6.08 MI E OF ILL 71	GUM CREEK	30	1.7		28	888	701501
050-0124	ILL 71 AT CEDAR PT	2.95 MI W OF US 51	CEDAR CREEK	33	1.7		26.8	930	701501
050-0125	MS 6460 (E 6TH RD)	4.4 MI E OF IL 251	FAI 80	24	1.7		205	5,269	701201
050-0127	TWP RD 170	2.0 MI E OF ILL 178	FAI 80	24	1.7		206	5,294	701201
050-0129	TWP RD TR 244	6.0 MI E OF ILL 178	FAI 80	24	1.7		204	5,243	701201
050-0130	TWP RD TR 284	8.1 MI E OF ILL 178	FAI 80	24	1.7		221	5,680	701201

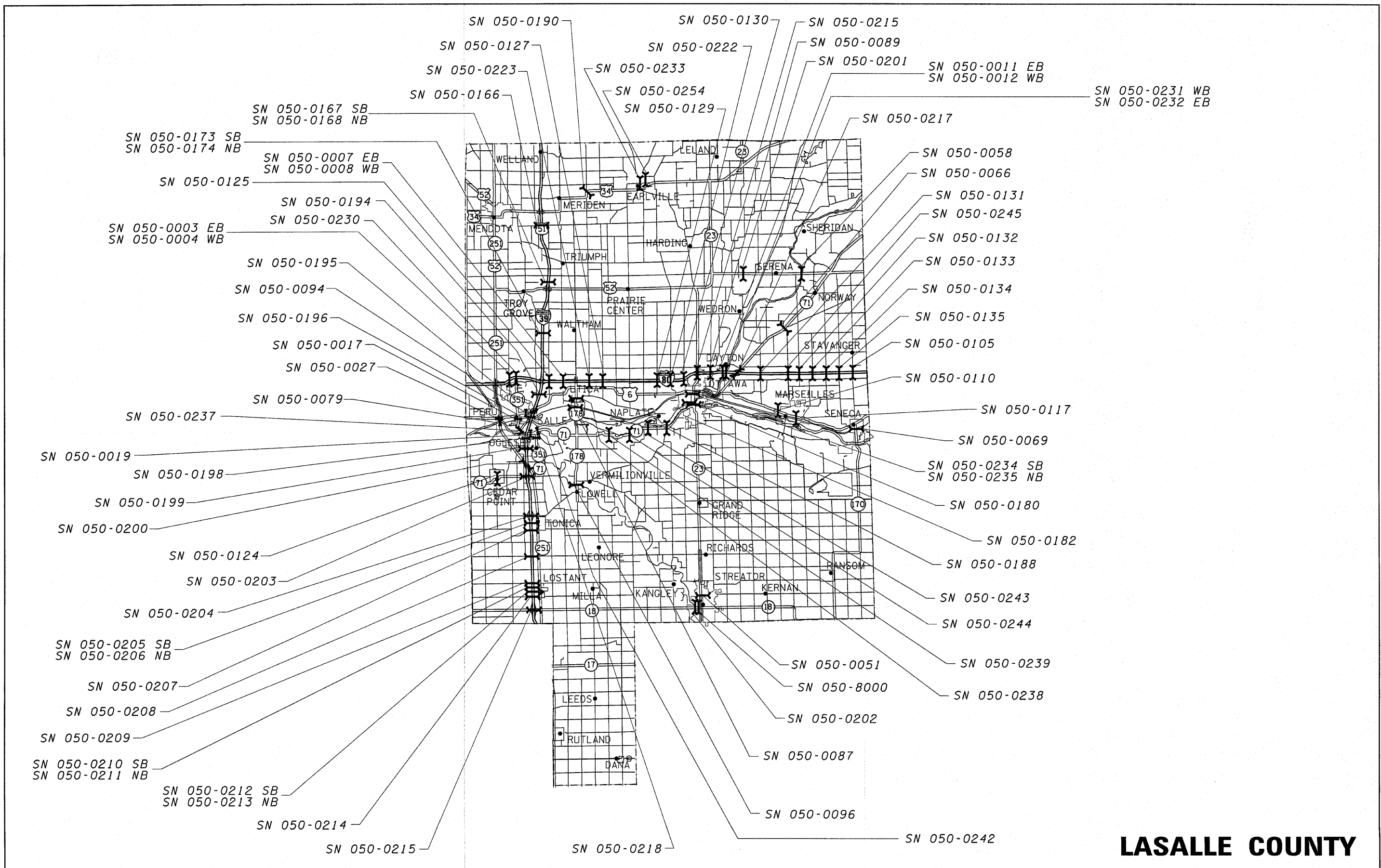
FILE NAME =	USER NAME = verdinemi	DESIGNED -	REVISED -	STATE OF ILLINOIS DEPARTMENT OF TRANSPORTATION	SEALING SCHEDULE			F.A. RTE.	SECTION	COUNTY	TOTAL SHEETS	SHEET NO.
ca:\pwork\pwork\verdinemi\10190485\DeskSealing.11.dgn	DRAWN -	REVISED -	VAR					*	VARIOUS	8	3	
PLOT SCALE = 50.0000 "/ IN.	CHECKED -	REVISED -	* 03 BRIDGE DECK SEALING 2011					CONTRACT NO. 66A59				
PLOT DATE = Oct 14, 2010 - 09:08:24 AM	DATE -	REVISED -	SCALE: NONE					SHEET NO. 1 OF 3 SHEETS	STA.	TO STA.	ILLINOIS FED. AID PROJECT	

CONCRETE SEALER

STRUCTURE NUMBER	FACILITY CARRIED	APPROXIMATE LOCATION	FEATURE CROSSED	DECK WIDTH FEET	PARAPET/CURB SURFACE (BOTH SIDES) FEET	MEDIAN SURFACE FEET	DECK LENGTH FEET	SEAL AREA SQ FT	TRAFFIC CONTROL AND PROTECTION STANDARD
LASALLE COUNTY NON-INTERSTATE (CONTINUED)									
050-0131	TWP RD TR 366	1.8 MI E OF ILL 71	FAI 80	24	1.7		201	5,166	701201
050-0132	TWP RD TR 416	0.8 MI E MARSIELLES	FAI 80	24	1.7		196	5,037	701201
050-0133	TWP RD TR 434	1.8 MI E MARSEIL RD	FAI 80	24	1.7		199	5,114	701201
050-0134	TWP RD TR 448	3 MI E MARSEILLES RD	FAI 80	24	1.7		199	5,114	701201
050-0135	TWP RD TR 456	3.9 MI E MARSEIL. RD	FAI 80	24	1.7		202	5,191	701201
050-0166	TR 105	1 MI S OF US 34	I-39/US 51	26.5	1.6		257	7,222	701201
050-0180	ILL 71 AND ILL 23	1 MILE SOUTH US 6	IL RV & ACC RD	57	7		1317	84,288	701601
050-0182	ILL 23 SBL LASALLE ST	DOWN TOWN OTTAWA	PARKING LOT ENTRANCE	30.8	7		86.5	3,270	701601
050-0188	ILL 71	7.38 MI E OF ILL 178	COVEL CR	32	7		192	7,488	701201
050-0190	US 34 FAP 587	8.71 MI E OF ILL 251	SUTPHENS RUN	36	7		119	5,117	701201
050-0194	FAU 6124/N.29TH RD	0.25 MI E. OF FAS 260	I-39/US 51	28	7		296	10,360	701201
050-0195	US 6 FAP 623	2.74 MI E OF ILL 351	I-39/US 51	66	7		407	29,711	701201
050-0198	TR 369	2.21 MI S. OF US 6	I-39/US 51	28	7		249	8,715	701201
050-0199	FAU 6093 WALNUT ST	.78 MI. W. OF ILL 351	I-39/US 51	57	7	6	237	16,590	701501
050-0200	IL 251/FAP 46	.5 MI. N. ILL 71	I-39/US 51	49	7	18	411	30,414	701201
050-0201	US 52 FAP 607	2.12 MI E OF ILL 23	INDIAN CREEK	32	7		398	15,522	701201
050-0202	ILL 18 WB	0.10 MI W OF ILL 23	VERMILION RIVER	30	7		400	14,800	701601
050-0203	ILL 71 FAP 619	0.46 MI W OF IL 251	I-39/US 51	61	7	6	242.5	17,945	701201
050-0204	CH 54	0.54 W OF IL 251	I-39/US 51	57	7	6	228	15,960	701201
050-0207	TR 483	6.13 MI N OF IL 18	I-39/US 51	28	7		257	8,995	701201
050-0208	FAS 254 CH 5	4.0 MI N OF IL 18	I-39/US 51	34	7		228.5	9,369	701201
050-0209	TR 513	2.0 MI N OF IL 18	I-39/US 51	28	7		229	8,015	701201
050-0214	TR 525	1.0 MI N OF IL 18	I-39/US 51	28	7		228.5	7,998	701201
050-0215	ILL 18 FAP 653	0.48 MI W OF IL 251	I-39/US 51	61	7	6	229.5	16,983	701201
050-0216	IL 23/FAP 68	ILL 23 AT OTTAWA	I 80	65	7	6	203.3	15,857	701601
050-0217	IL 71 FAP 311	JUNCTION IL 71	I-80	49	7	18	236.2	17,479	701201
050-0218	ILL 351 FAP 619	2.55 MI S OF US 6	LONE STAR CEMENT RR	30	4.35		145	4,981	701501
050-0222	FAS 1267/TERRA COTTA	7.0 MI E OF IL 178	I 80	27.5	7		232.7	8,028	701201
050-0223	TR 156 (LONE TREE RD	1 MI E OF IL 178	I 80	27.5	7		232.7	8,028	701201
050-0230	ILL 351 ST. VINCENT	1.6 MI E JC ILL 251	FAI 80	49	7.4	4.5	245.5	14,951	701456 NB & SB
050-0233	OLD US 34 SBI 18	IN EARLVILLE	INDIAN CREEK	30	7		96.6	3,574	701501
050-0234	ILL 23/IL 71 FAP 68	LASALLE ST IN OTTAWA	ILL MICH CANAL	49.3	1.5		21.7	1,102	701601
050-0235	ILL 23 & 71	COLUMBUS ST OTTAWA	ILL MICH CANAL	43.3	1.5		21.7	972	701601
050-0237	ILL 351/FAP619	1.0 MI. S OF US 6	IL RIVER	39.1	7		1774.9	81,823	701201
050-0238	IL 178 FAS 1279	0.92 MI S OF US 6	CLARK RUN	36	1.2		34.5	1,283	701501
050-0239	IL 71 FAP 627	3.18 MI. E OF IL 178	CREEK@HENNEPIN CANYN	36	7		73.1	3,143	701201
050-0242	IL 71	3.2 MI W OF IL 178	VERMILION RIVER	32	7		355	13,845	701201
050-0243	IL 71	5.90 MI E OF IL 178	INTERMIT STREAM	32	7		82.9	3,233	701201
050-0244	IL 71/FAP 627	4.3 MI E OF IL 178	SALT WELLS CR	33	7		80	3,200	701201
050-0245	MARSEILLES RD/FAS268	3.8 MI E OF IL 71	I-80	56	7		192.5	12,128	701201
050-0254	WATER ST/N 4550TH RD	0.44 MI N OF US 34	INDIAN CREEK	20.8	1.5		63.2	1,409	701201
050-8000	EBL OF ILL 18	2 BLKS. W OF ILL 23	VERMILION RIVER	29.3	4.25		237	7,951	701601
LASALLE COUNTY SUB-TOTAL								927,027	

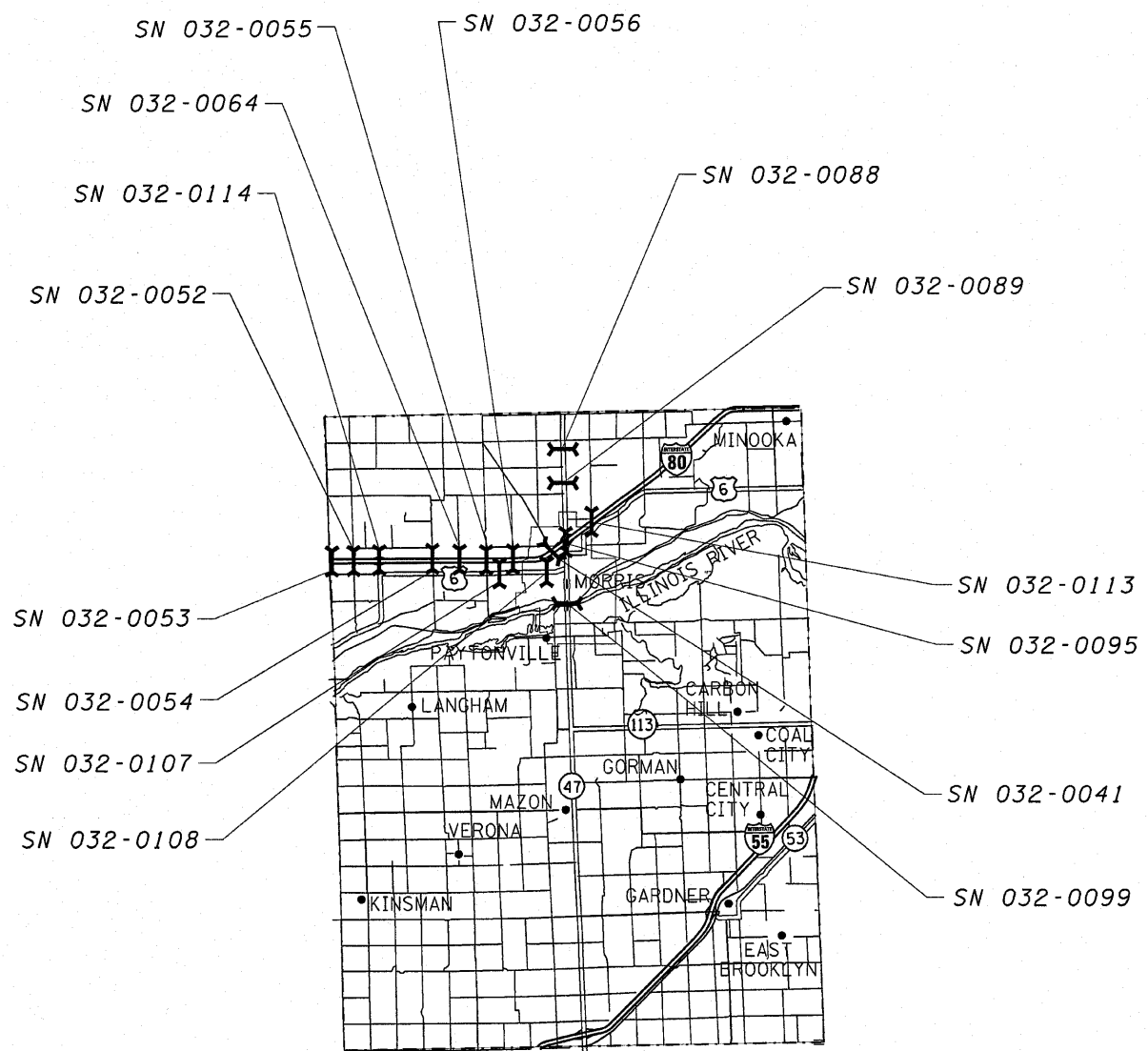
CONCRETE SEALER

STRUCTURE NUMBER	FACILITY CARRIED	APPROXIMATE LOCATION	FEATURE CROSSED	DECK WIDTH FEET	PARAPET/CURB SURFACE (BOTH SIDES) FEET	MEDIAN SURFACE FEET	DECK LENGTH FEET	SEAL AREA SQ FT	TRAFFIC CONTROL AND PROTECTION STANDARD
GRUNDY COUNTY NON-INTERSTATE									
032-0041	LISBON RD FAU 5966	0.7 MI W OF ILL 47	FAI 80	28	1.7		202	5,999	701501
032-0052	NETTLE CREEK RD CH 61T	8.23 MI W OF ILL 47	FAI 80	28	1.7		195.7	5,812	701201
032-0053	COUNTY LINE RD TR 4	9.12 MI W ILL 47	FAI 80	24	1.7		201.3	5,173	701201
032-0054	NETTLE SCHOOL RD TR 70	5.20 MI W ILL 47	FAI 80	24	1.7		190	4,883	701201
032-0055	SARATOGA RD TR 86	3.19 MI W OF ILL 47	FAI 80	24	1.7		190	4,883	701201
032-0056	ASHTON RD FAU 5975	2.21 MI W ILL 47	FAI 80	24	1.7		190	4,883	701501
032-0064	PIONEER RD TR 78	4.20 MI W OF ILL 47	FAI 80	24	1.7		190	4,883	701201
032-0088	ILL 47	3.5 MI N OF I-80	VALLEY RUN	36	7		86.5	3,720	701201
032-0089	ILL 47	2.3 MI N OF I-80	SARATOGA CREEK	36	7		91.5	3,935	701201
032-0095	ILL 47	INTER I80 & ILL47	I80	84	4.3	1+(3.5 to 15.5)	254	22,682	701601
032-0099	IL 47 FAP 326	APPR. 1.23 MI S /US 6	IL RIV. & I & M CANAL	60.7	7	5	1730	118,851	701601
032-0107	US 6 FAU 5952	2.49 MI W OF IL 47	NETTLE CREEK	74	7		147.4	11,939	701201
032-0108	US 6	WEST OF IL 47	E FORK NETTLE CREEK	67	1.5		88.5	6,062	701501
032-0113	ASHLEY RD/FAU 5974	1.24 MI E OF IL 47	I-80	32	7		251	9,789	701201
032-0114	FAP 623 (AT OR 623)	SENECA JUNCTION	I-80 EB & WB	62	7		205.5	14,180	701201
GRUNDY COUNTY SUB-TOTAL								227,674	
TOTAL								1,154,701	



LASALLE COUNTY

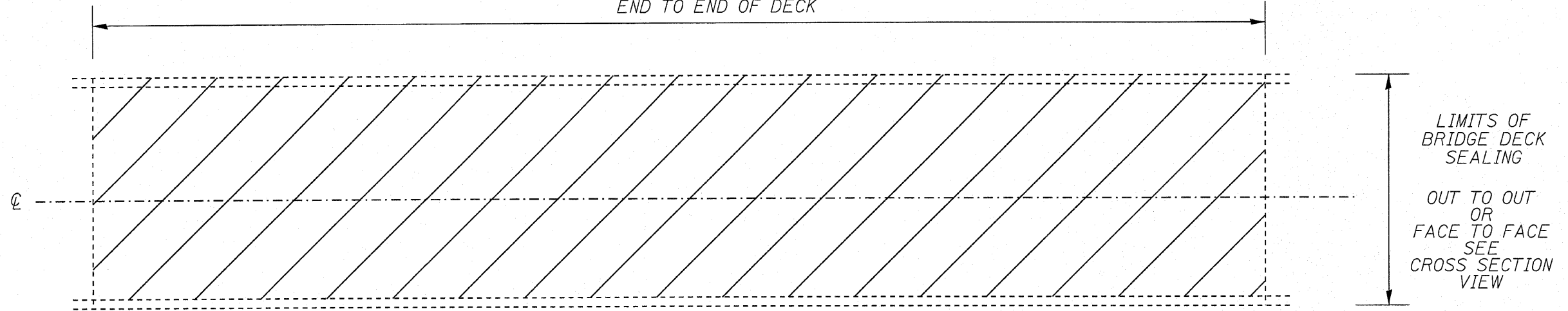
FILE NAME =	USER NAME = verdinml	DESIGNED -	REVISED -	STATE OF ILLINOIS DEPARTMENT OF TRANSPORTATION	LASALLE COUNTY LOCATION MAP			F.A. RTE.	SECTION	COUNTY	TOTAL SHEETS	SHEET NO.			
c:\pwwork\pwwork\verdine\1\0190485\DeckSealing-11.dgn		DRAWN -	REVISED -		SCALE: NONE	SHEET NO.	OF	SHEETS	STA.	TO STA.	VAR	*	VARIOUS	8	6
		CHECKED -	REVISED -								*D3 BRIDGE DECK SEALING 2011 CONTRACT NO. 66A59				
		DATE -	REVISED -								ILLINOIS FED. AID PROJECT				



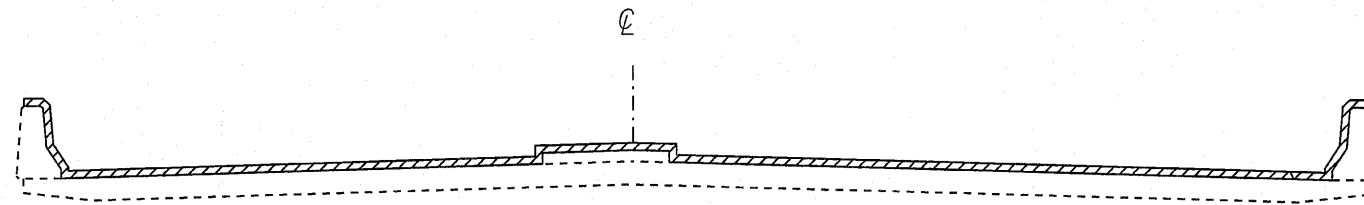
GRUNDY COUNTY

FILE NAME =	USER NAME = verdneml	DESIGNED -	REVISED -	STATE OF ILLINOIS DEPARTMENT OF TRANSPORTATION	GRUNDY COUNTY LOCATION MAP			F.A. RTE.	SECTION	COUNTY	TOTAL SHEETS	SHEET NO.
c:\pwork\p\dot\verdneml\d0198485\DeckSealing-11.dgn		DRAWN -	REVISED -					VAR	*	VARIOUS	8	7
PLOT SCALE = 50.0000' / IN.		CHECKED -	REVISED -		* 03 BRIDGE DECK SEALING 2011 CONTRACT NO. 66A59							
PLOT DATE = Oct 14, 2010 - 09:06:59 AM		DATE -	REVISED -		ILLINOIS FED. AID PROJECT							
				SCALE: NONE	SHEET NO.	OF	SHEETS	STA.	TO STA.			

LIMITS OF BRIDGE DECK SEALING
END TO END OF DECK



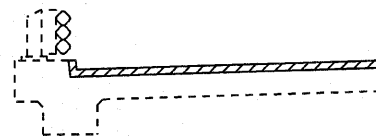
PLAN VIEW



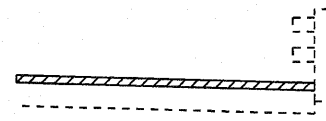
SECTION WITH
PARAPET AND MEDIAN

NOTE: BRIDGE APPROACH PAVEMENT
SHALL NOT BE SEALED

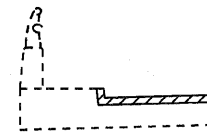
Existing pavement markings shall be temporarily covered
prior to application of the deck surface treatment, to
prevent the material from being applied to the markings.
The temporary covering shall be removed after the
application of the deck surface treatment and prior to
opening to traffic. Cost is included with Concrete Sealer.



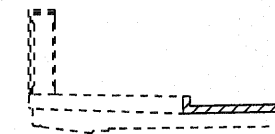
SECTION WITH CURB AND
TUBULAR THRIE BEAM RETROFIT RAIL



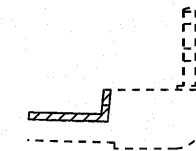
SECTION WITH
BRIDGE RAIL



CONCRETE AND
ALUMINUM RAILING




CONCRETE
BRIDGE RAILING



BRIDGE RAIL

VARIOUS SECTIONS WITH SIDEWALK AND/OR CONCRETE CURB

 AREA TO BE SEALED

NOT TO SCALE

FILE NAME =	USER NAME = verdneml	DESIGNED -	REVISED -	STATE OF ILLINOIS DEPARTMENT OF TRANSPORTATION	BRIDGE AND PARAPET SEALING DETAILS				F.A. RTE.	SECTION	COUNTY	TOTAL SHEETS	SHEET NO.		
c:\pwork\pwork\verdneml\0190405\DeckSealing_11.dgn		DRAWN -	REVISED -		SCALE: NONE	SHEET NO.	OF	SHEETS	STA.	TO STA.	VAR	*	VARIOUS	8	8
		PLOT SCALE = 50.0000' / IN.	CHECKED -		REVISED -							* 03 BRIDGE DECK SEALING 2011	CONTRACT NO. 66A59		
		PLOT DATE = Oct 14, 2010 - 09:05:09 AM	DATE -		REVISED -							ILLINOIS FED. AID PROJECT			