

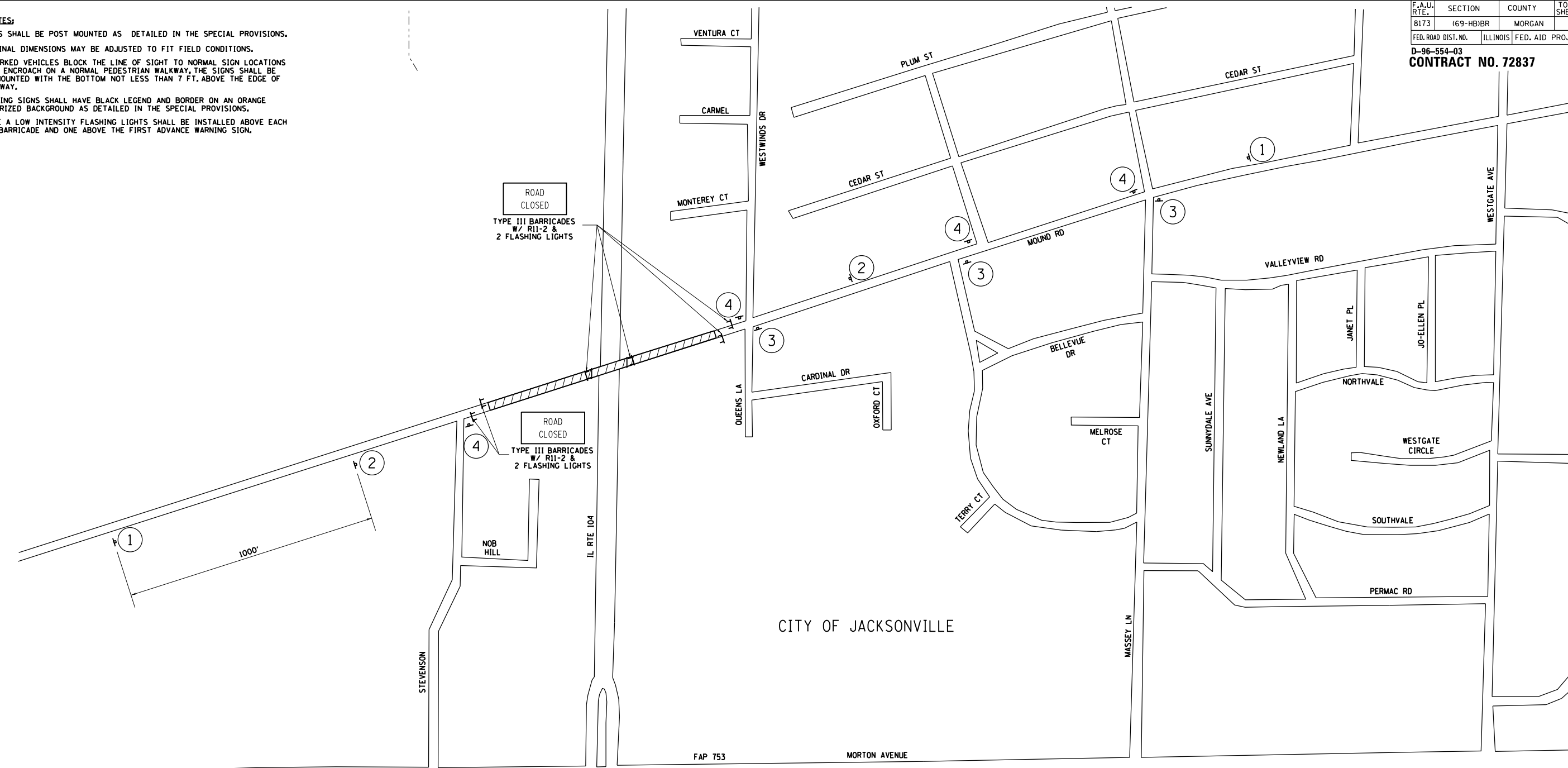
F.A.U. RTE.	SECTION	COUNTY	TOTAL SHEETS	SHEET NO.
8173	(69-HB)BR	MORGAN	63	18

FED. ROAD DIST. NO. ILLINOIS FED. AID PROJECT

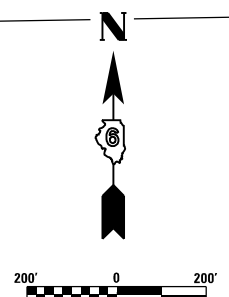
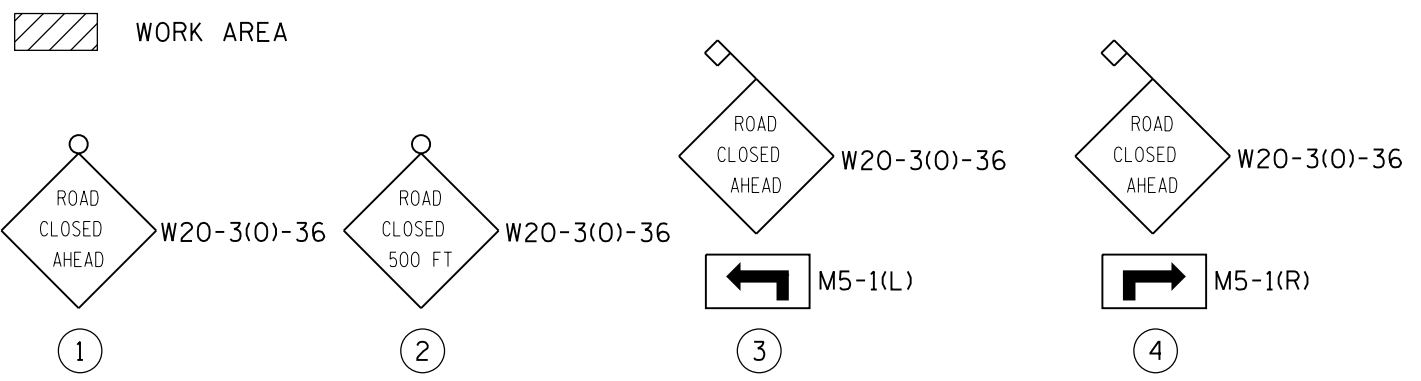
D-96-554-03
CONTRACT NO. 72837

GENERAL NOTES:

1. ALL SIGNS SHALL BE POST MOUNTED AS DETAILED IN THE SPECIAL PROVISIONS.
2. LONGITUDINAL DIMENSIONS MAY BE ADJUSTED TO FIT FIELD CONDITIONS.
3. WHERE PARKED VEHICLES BLOCK THE LINE OF SIGHT TO NORMAL SIGN LOCATIONS OR SIGNS ENCRDACH ON A NORMAL PEDESTRIAN WALKWAY, THE SIGNS SHALL BE POSTED MOUNTED WITH THE BOTTOM NOT LESS THAN 7 FT. ABOVE THE EDGE OF THE ROADWAY.
4. ALL WARNING SIGNS SHALL HAVE BLACK LEGEND AND BORDER ON AN ORANGE REFLECTORIZED BACKGROUND AS DETAILED IN THE SPECIAL PROVISIONS.
5. TWO TYPE A LOW INTENSITY FLASHING LIGHTS SHALL BE INSTALLED ABOVE EACH TYPE III BARRICADE AND ONE ABOVE THE FIRST ADVANCE WARNING SIGN.



LEGEND



REVISIONS	
NAME	DATE

ILLINOIS DEPARTMENT OF TRANSPORTATION
TRAFFIC CONTROL MAP
MOUND ROAD

DATE 10/20/10
DRAWN BY JCW
CHECKED BY JRB