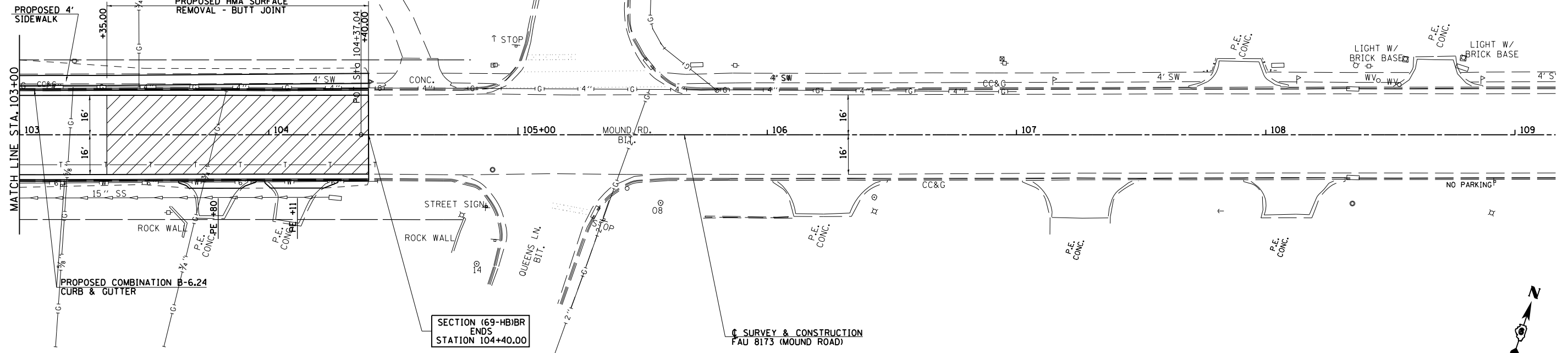


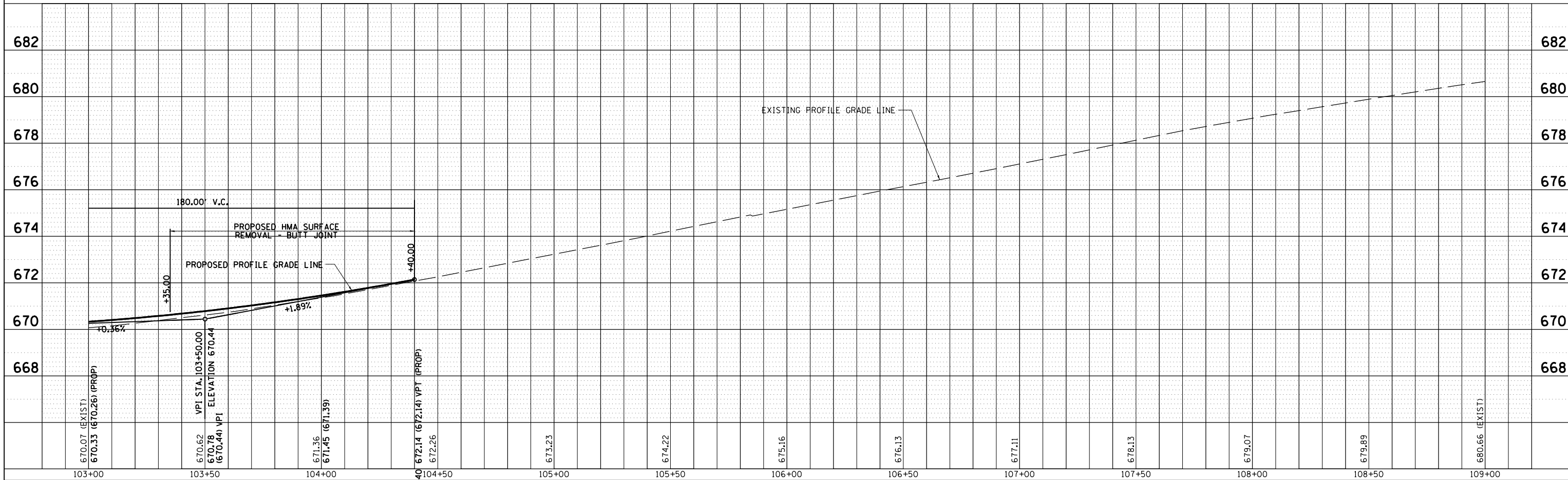
SEC 24, T15N, R11W, 3RD PM

F.A. RTE.	SECTION	COUNTY	TOTAL SHEETS	SHEET NO.
8173	(69-HB)BR	MORGAN	63	25
STA. 103+00		TO STA. 109+00		
FED. ROAD DIST. NO.		ILLINOIS FED. AID PROJECT		
<b>CONTRACT NO. 72837</b>				

POT STA 104+37.04  
P.K. & CAP IN THIS "X"



SEC 25, T15N, R11W, 3RD PM



FAU 8173 (MOUND ROAD) ROADWAY PLAN & PROFILE, STA 103+00 TO STA 109+00

PLAN	DATE
SURVEYED	
NOTED	
CHECKED	
BY	
DATE	

PROFILE	DATE
SURVEYED	
NOTED	
CHECKED	
BY	
DATE	