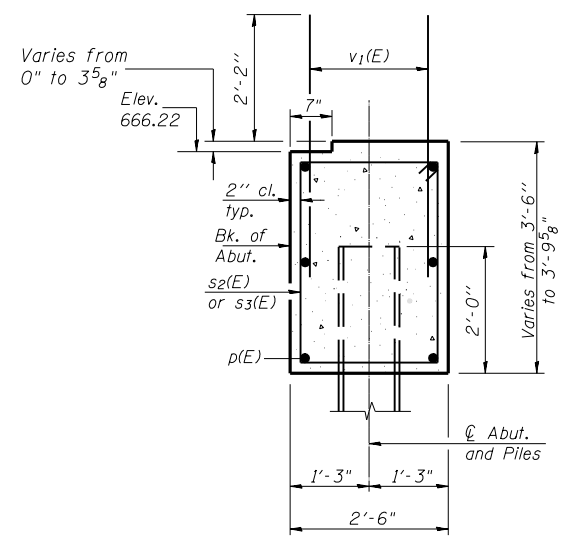
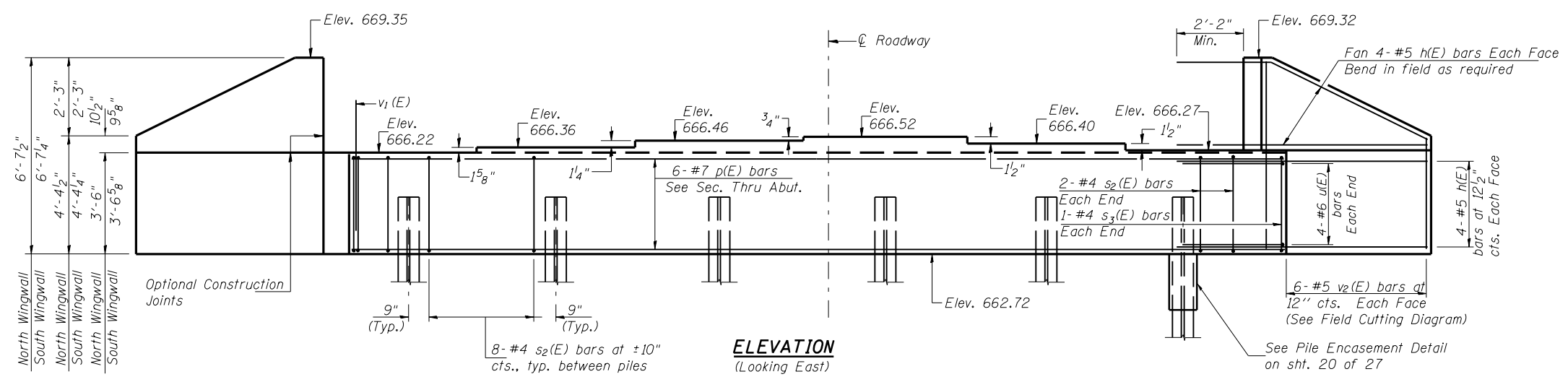
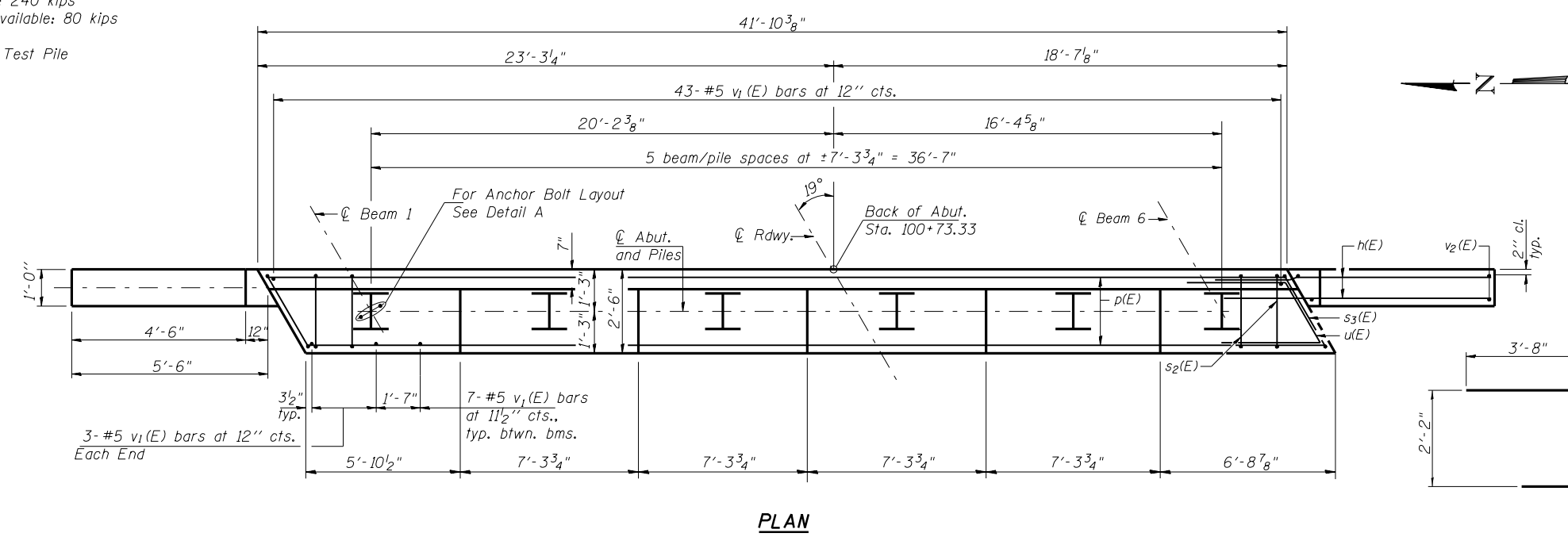


Notes: Four steps monolithically with cap.

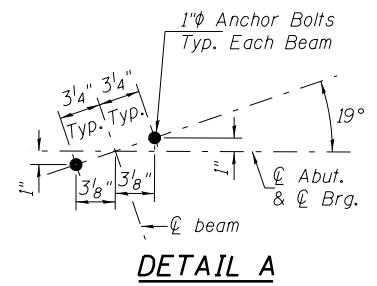
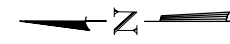


PILE DATA

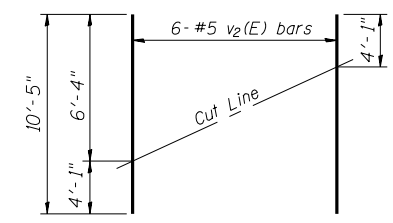
Type & Size: Steel HP10x42
Nominal Req'd. Bearing: 240 kips
Allowable Resistance Available: 80 kips
Est. Length: 41 ft.
No. Required: 5 plus 1 Test Pile



PLAN

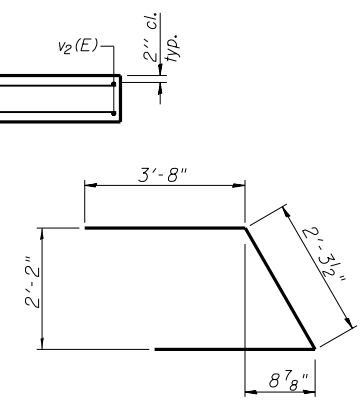


DETAIL A

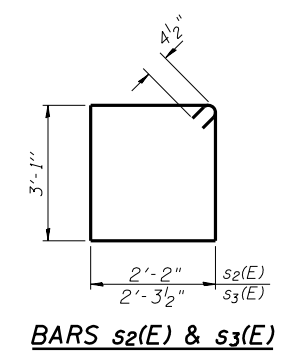


FIELD CUTTING DIAGRAM

Order v2(E) full length. Cut as shown and use remainder of bars in opposite face.



BAR u(E)



BARS s2(E) & s3(E)

BILL OF MATERIAL

Bar No.	Size	Length	Shape
h(E)	#5	8'-8"	
p(E)	#7	41'-6"	
s2(E)	#4	11'-3"	□
s3(E)	#4	11'-6"	□
u(E)	#6	9'-8"	∩
v1(E)	#5	4'-4"	
v2(E)	#5	10'-5"	
Concrete Structures			Cu. Yd. 16.4
Concrete Encasement			Cu. Yd. 2.1
Reinforcement Bars, Epoxy Coated			Pound 1,770
Structure Excavation			Cu. Yd. 65
Furnishing Steel Pile HP10x42			Foot 205
Driving Piles			Foot 205
Test Pile Steel HP10x42			Each 1

EAST ABUTMENT
MOUND ROAD (FAU ROUTE 8173)
OVER ILLINOIS ROUTE 104
SECTION (69-HB)BR
MORGAN COUNTY
STATION 100+00.00
STRUCTURE NO. 069-0521

HU CHISON ENGINEERING, INC.
JACKSONVILLE, ILLINOIS
Date: 12/21/07

DESIGNED	BAN
CHECKED	JOH
DRAWN	TD & TC
CHECKED	BAN