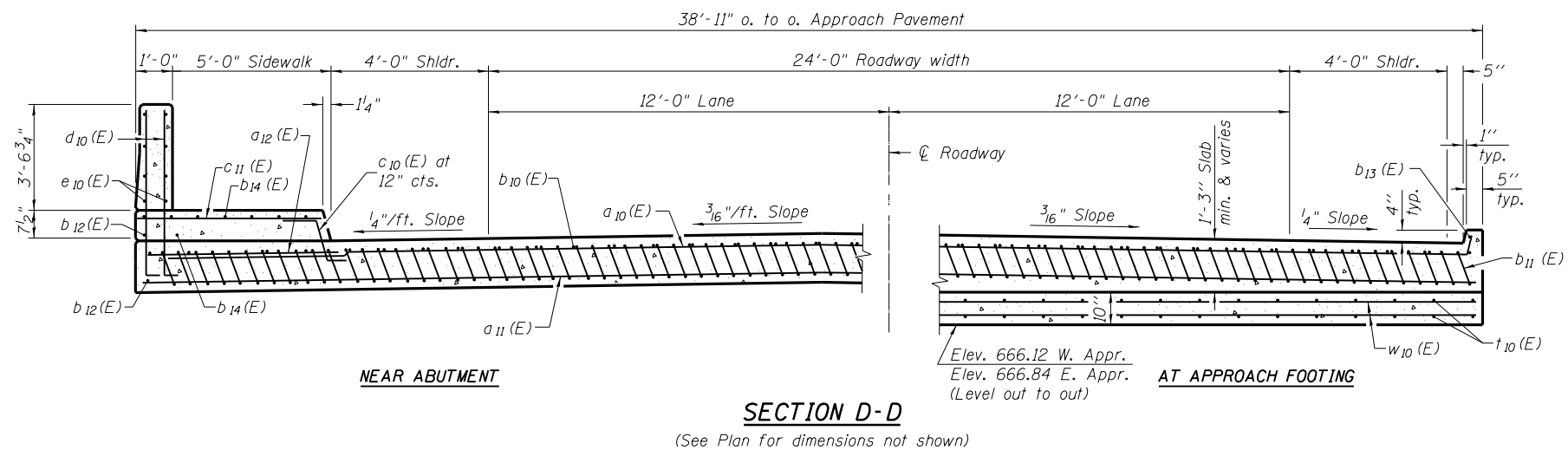


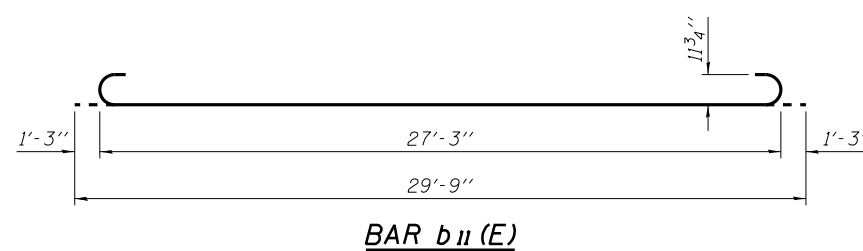
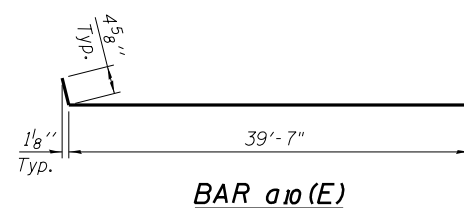
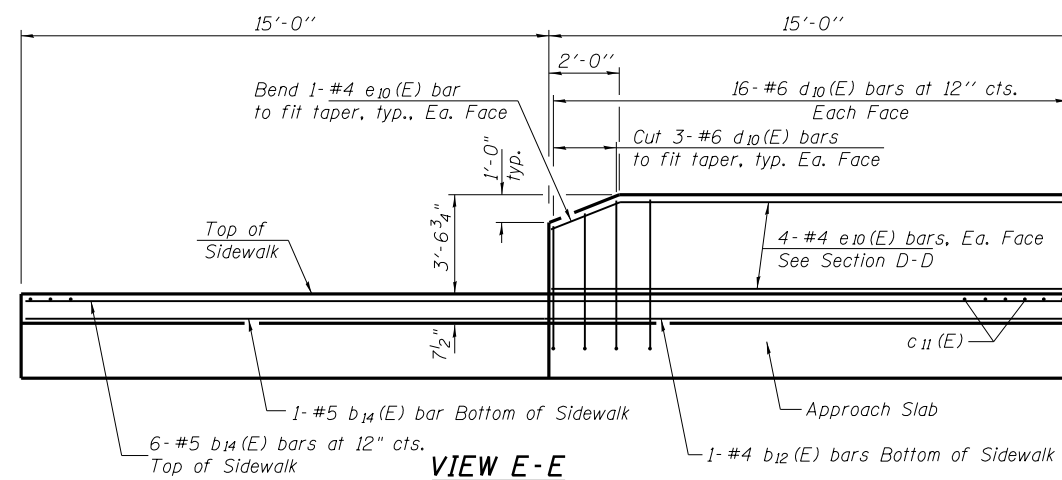
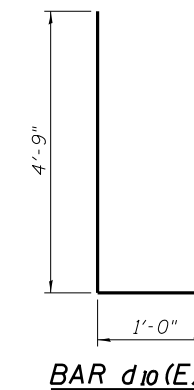
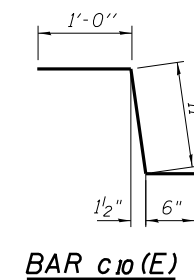
Notes:  
 See sheet 19A of 27 for Detail A and View B-B.  
 Approach slab and parapet concrete shall be paid for as Concrete Superstructure.  
 Approach footing concrete shall be paid for as Concrete Structures.  
 Reinforcement shall be paid for as Reinforcement Bars, Epoxy Coated.  
 For v(E) bar details, see sheet 12 of 27.  
 The approach footing maximum applied service bearing pressure (Qmax) = 2.0 ksf.  
 For bar splicer details, see sheet 21 of 27.  
 Cost of excavation for approach footing included with Concrete Structures.  
 For Porous Granular Embankment (Special) and drainage treatment details, see sheet 2 of 27.  
 For additional parapet details, see sheet 19A of 27.

\* Tilt #9 b<sub>11</sub>(E) bars as required to maintain clearance.  
 \*\*\* Cost included with Concrete Superstructure.



**TWO APPROACHES  
BILL OF MATERIAL**

Bar	No.	Size	Length	Shape
a <sub>10</sub> (E)	50	#4	40'-0"	—
a <sub>11</sub> (E)	92	#5	39'-9"	—
a <sub>12</sub> (E)	24	#6	8'-0"	—
b <sub>10</sub> (E)	62	#4	29'-8"	—
b <sub>11</sub> (E)	182	#9	29'-9"	—
b <sub>12</sub> (E)	2	#4	14'-8"	—
b <sub>13</sub> (E)	2	#4	29'-8"	—
b <sub>14</sub> (E)	14	#5	29'-8"	—
c <sub>10</sub> (E)	60	#5	2'-5"	~
c <sub>11</sub> (E)	60	#5	5'-6"	—
d <sub>10</sub> (E)	64	#6	5'-9"	L
e <sub>10</sub> (E)	16	#4	14'-8"	—
t <sub>10</sub> (E)	152	#4	10'-3"	—
w <sub>10</sub> (E)	80	#5	39'-9"	—
Concrete Superstructure		Cu. Yd.	125.3	
Concrete Structures		Cu. Yd.	24.8	
Reinforcement Bars, Epoxy Coated		Pound	31,130	



DESIGNED	BAN
CHECKED	JOH
DRAWN	TAC
CHECKED	BAN

(Sheet 2 of 2)

**BRIDGE APPROACH SLAB DETAILS  
MOUND ROAD (FAU ROUTE 8173)  
OVER ILLINOIS ROUTE 104  
SECTION (69-HB)BR  
MORGAN COUNTY  
STATION 100+00.00  
STRUCTURE NO. 069-0521**

HU CHISON ENGINEERING, INC.  
JACKSONVILLE, ILLINOIS  
Date: 10/18/10