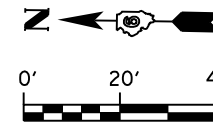


NOTE:

THE CONTRACTOR SHALL STAKE OUT THE CONSTRUCTION LIMITS PRIOR TO ANY TREE REMOVAL. THE ENGINEER WILL THEN IDENTIFY ANY TREES TO BE SAVED. NO TREES SHALL BE REMOVED UNTIL THE ENGINEER HAS IDENTIFIED ALL TREES TO BE SAVED.

NE 1/4 SECTION 32, T 5 N, R 8 W, 4TH PM



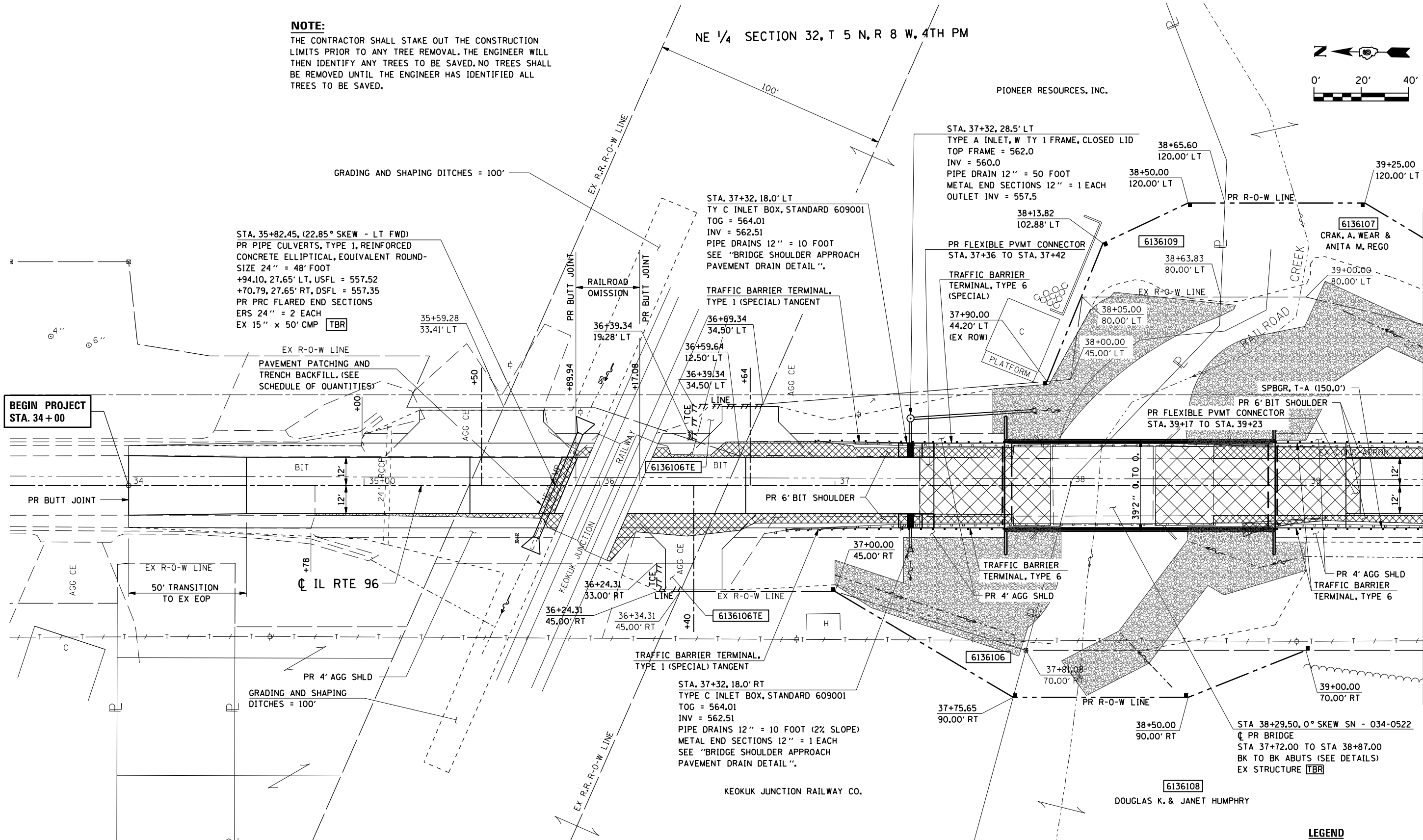
PIONEER RESOURCES, INC.

STA. 35+82.45, (22.85° SKEW - LT FWD)
 PR PIPE CULVERTS, TYPE 1, REINFORCED
 CONCRETE ELLIPTICAL, EQUIVALENT ROUND-
 SIZE 24" = 48' FOOT
 +94.10, 27.65' LT, USFL = 557.52
 +70.79, 27.65' RT, DSFL = 557.35
 PR PRC FLARED END SECTIONS
 ERS 24" = 2 EACH
 EX 15" x 50' CMP **TBR**

PAVEMENT PATCHING AND
 TRENCH BACKFILL. (SEE
 SCHEDULE OF QUANTITIES)

BEGIN PROJECT
 STA. 34 + 00

MATCH LINE STA. 39 + 50



NW 1/4 SECTION 32, T 5 N, R 8 W, 4TH PM

LEGEND

- PAVEMENT / APPROACH REMOVAL
- SHOULDER REMOVAL

FILE NAME =	USER NAME = laughl1n1	DESIGNED -	REVISED -
et:\pw\work\p1dot\laughl1n1\0230976\8077PL01.SHT		DRAWN - AAD	REVISED -
	PLOT SCALE = 40.0000' / in.	CHECKED -	REVISED -
	PLOT DATE = Aug-11-2010 10:38:01AM	DATE - 10-22-07	REVISED -

STATE OF ILLINOIS
 DEPARTMENT OF TRANSPORTATION

PLAN SHEET

SCALE: 1" = 20' SHEET NO. OF SHEETS STA. 33+50 TO STA. 39+50

F.A.P. RTE.	SECTION	COUNTY	TOTAL SHEETS	SHEET NO.
506	123 B-1	HANCOCK	70	17
CONTRACT NO. 72992				
FED. ROAD DIST. NO.		ILLINOIS FED. AID PROJECT		