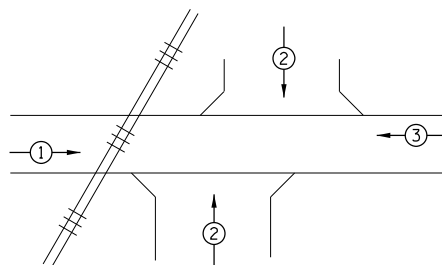


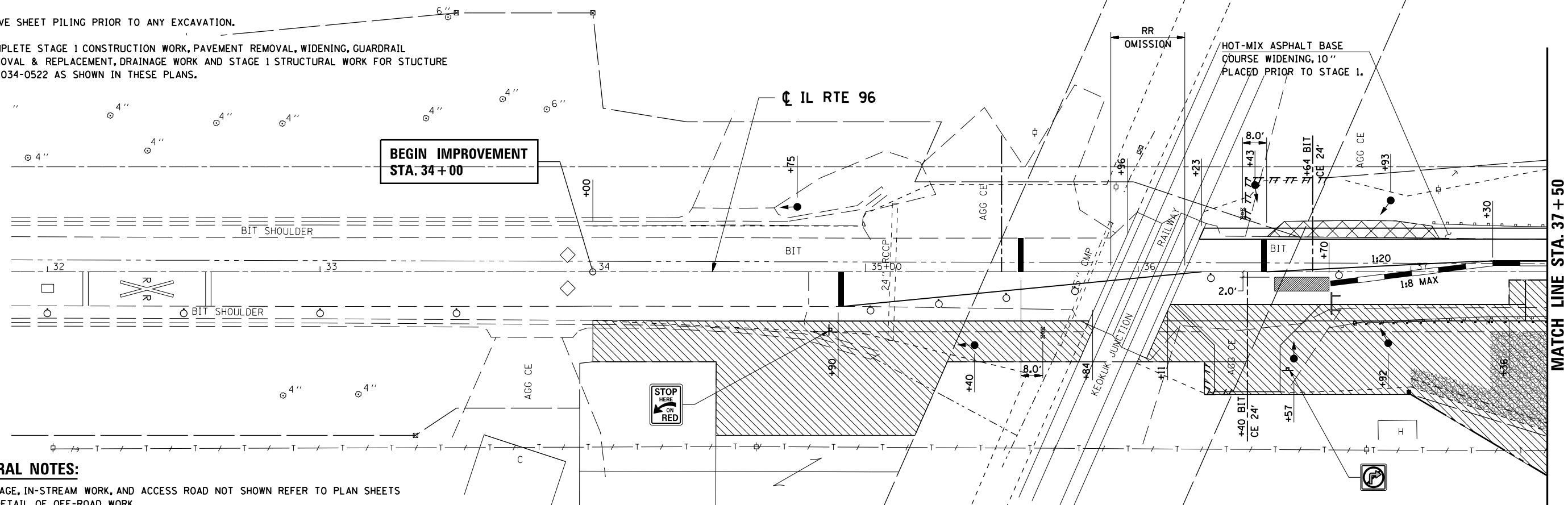
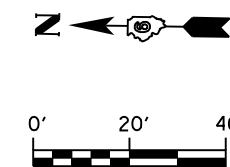
STAGE 1 SEQUENCE OF CONSTRUCTION

1. PRIOR TO INSTALLATION OF STAGE 1 TRAFFIC CONTROL, PIPE CULVERT AT STA. 35+82.45 SHALL BE REPLACED USING STANDARD 701201.
2. REMOVE EXISTING BITUMINOUS SHOULDER ON EAST SIDE OF IL 96 AND REPLACE WITH HOT-MIX ASPHALT BASE COURSE, 10" AS SHOWN ON THESE PLANS. UTILIZE TRAFFIC CONTROL AND PROTECTION STANDARD 701326.
3. SET UP TEMPORARY TRAFFIC CONTROL UTILIZING THESE PLANS IN CONJUNCTION WITH STANDARD 701321 AND 704001.
4. PLACE TEMPORARY BARRIERS AND PAVEMENT MARKING IN ACCORDANCE WITH THESE PLANS FOR STAGE 1 CONSTRUCTION.
5. LOCATE TEMPORARY TRAFFIC SIGNALS AS SHOWN ON THESE PLANS. INSTALL LOOP DETECTORS.
6. DRIVE SHEET PILING PRIOR TO ANY EXCAVATION.
7. COMPLETE STAGE 1 CONSTRUCTION WORK, PAVEMENT REMOVAL, WIDENING, GUARDRAIL REMOVAL & REPLACEMENT, DRAINAGE WORK AND STAGE 1 STRUCTURAL WORK FOR STRUCTURE No. 034-0522 AS SHOWN IN THESE PLANS.



PREEMPT SEQUENCE:

GO TO YELLOW
 RUN ALL RED CLEARANCE
 HOLD ALL RED
 RUN ALL RED CLEARANCE WHEN PREEMPT DEACTIVATES
 NORMAL OPERATION



GENERAL NOTES:

1. DRAINAGE, IN-STREAM WORK, AND ACCESS ROAD NOT SHOWN REFER TO PLAN SHEETS FOR DETAIL OF OFF-ROAD WORK.
2. CONTRACTOR SHALL MAINTAIN ACCESS TO ALL ENTRANCES AT ALL TIMES.
3. THIS TRAFFIC CONTROL PLAN SHALL BE USED IN CONJUNCTION WITH STANDARD 701321-09 AND AS DIRECTED BY THE ENGINEER.
4. VERTICAL PANELS, DRUMS WITH STEADY BURNING LIGHTS, TYPE III BARRICADES, SIGNS, TRAFFIC SIGNALS, MICROWAVE DETECTOR SYSTEMS, DETECTOR LOOPS, AND TYPE C BIDIRECTIONAL REFLECTORS SHALL BE INCLUDED IN THE COST OF THE PAY ITEM "TRAFFIC CONTROL AND PROTECTION, STANDARD 701321 (SPECIAL)".
5. THE CONTRACTOR SHALL PROVIDE AND ERECT A W12-I102 48X48(0) LANE WIDTH SIGNS. THESE SIGNS SHALL BE PLACED AS DIRECTED BY THE ENGINEER BEFORE IMPLEMENTING ANY STAGE TRAFFIC CONTROL.
6. REMOVE ANY CONFLICTING PAVEMENT MARKINGS.
7. THE CONTRACTOR SHALL NOTIFY THE DISTRICT 6 TRAFFIC SECTION OF THE BUREAU OF OPERATIONS (PH: 785-5836) AT LEAST ONE WEEK PRIOR TO IMPLEMENTING STAGE TRAFFIC CONTROL AND WHEN EVER A SWITCH IN STAGING IS MADE.
8. THE CONTRACTOR SHALL NOTIFY THE DISTRICT 6 TRAFFIC SECTION OF THE BUREAU OF OPERATIONS AT LEAST THREE (3) DAYS PRIOR TO ACTIVATING THE TEMPORARY TRAFFIC SIGNALS. PLEASE REFER TO THE DISTRICT 6 SPECIAL PROVISIONS FOR TEMPORARY BRIDGE TRAFFIC SIGNALS FOR CONTACT INFORMATION.

LEGEND

- WORK AREA
- INDUCTION LOOP DETECTOR
- IMPACT ATTENUATOR
- 24" STOP BAR
- DRUMS WITH STEADY BURNING LIGHTS
- TEMPORARY TRAFFIC SIGNAL
- TEMPORARY CONCRETE BARRIER
- TYPE III BARRICADE
- DOUBLE VERTICAL PANEL W/STEADY BURNING LIGHTS

| | | | |
|--|------------------------------------|-----------------|-----------|
| FILE NAME = | USER NAME = laughl1n1 | DESIGNED - | REVISED - |
| et:\pw\work\p1dot\laughl1n1\02230976\8077MOT1_01.SHT | | DRAWN - AAD | REVISED - |
| | PLOT SCALE = 40.0000' / in. | CHECKED - | REVISED - |
| | PLOT DATE = Aug-11-2010 10:39:05AM | DATE - 10-22-07 | REVISED - |

**STATE OF ILLINOIS
 DEPARTMENT OF TRANSPORTATION**

**MAINTENANCE OF TRAFFIC
 STAGE 1**

SCALE: 1" = 20' SHEET NO. OF SHEETS STA. 32+00 TO STA. 37+50

| | | | | |
|---------------------|---------|---------|---------------------------|-----------|
| F.A.P. RTE. | SECTION | COUNTY | TOTAL SHEETS | SHEET NO. |
| 506 | 123 B-1 | HANCOCK | 70 | 27 |
| FED. ROAD DIST. NO. | | | ILLINOIS FED. AID PROJECT | |
| CONTRACT NO. 72992 | | | | |